

The Anglican Parish of Bobcaygeon, Dunsford and Burnt River

2016



43 Sherwood Street, P.O. Box 133
Bobcaygeon, ON K0M 1A0

705-738-2415
christchurch@i-zoom.net
www.christchurchbobcaygeon.com

Table of Contents

Introduction and Executive Summary	3
Christ Church, Bobcaygeon	5
Worship, Liturgy & Music	
Learning & Spiritual Nurture & Development	
Mutual Support & Fellowship	
Pastoral Care	
St. John's, Dunsford	8
Worship, Liturgy & Music	
Learning & Spiritual Nurture & Development	
Mutual Support & Fellowship	
Pastoral Care	
St. Luke's, Burnt River	10
Worship, Liturgy & Music	
Learning & Spiritual Nurture & Development	
Mutual Support & Fellowship	
Pastoral Care	
5. Human, Physical & Financial Resources	12
6. Our Neighbourhood & our Mission Field	14
7. Outreach & Evangelism	16
8. Present Reality and Future Vision	18
9. Our New Priest	19
10. Appendices	20

INTRODUCTION and EXECUTIVE SUMMARY

Introduction

The three-point parish of Bobcaygeon, Dunsford and Burnt River is located a two hour drive northeast of Toronto in the City of Kawartha Lakes. (see Appendix “A”)

Christ Church, located in the town of Bobcaygeon (population 3,000), is the administrative centre of the parish and the location of the rectory. St. John’s, 14 km (9 miles), south west of Bobcaygeon in the farming village of Dunsford, together with St. Luke’s, 26 km (16 miles) north west of Bobcaygeon in a service-oriented and cottage hamlet of Burnt River, constitute approximately 22 percent of the parish population and funding.

All three churches are over 100 years old, and have been expanded and upgraded to code over the years. All buildings are in excellent condition. Each congregation holds an annual vestry meeting, maintains its property, sets and approves a budget, keeps financial records, and contributes a percentage of it’s income to the parish coffers.

The parish elects two representatives to Synod, plus an alternate. St. John’s and St. Luke’s each have two Wardens, and Christ Church has two Wardens and one Deputy Warden. All seven meet with the incumbent four times a year. One of these meetings is a parish budget meeting.

There are three part-time, contracted positions: a Secretary/bookkeeper who assists the priest and Wardens with administrative duties, and an organist and custodian at Christ Church. There are also two licensed volunteer lay readers who lead morning prayer in the three churches on a rotating basis. Otherwise, the congregations rely on capable and well-trained volunteer lay people to provide leadership for the many groups and organizations in the parish.

Although the size and culture of each congregation varies, they are as one in matters of faith, mission and goals. In this they are led and assisted by an incumbent priest and two licensed, volunteer lay readers.

Executive Summary

Members of the parish of Bobcaygeon, Dunsford and Burnt River are seeking a new priest to help them restore their church schools, to teach and preach the gospel, to be a visible presence in the community, and to face the challenges of demographics and rising costs.

The congregations have many attributes. For example, St. John's has new families with children, St. Luke's has presence and visibility, and Christ Church has physical capacity, a rectory and diverse musical traditions.

There are, between the congregations, approximately 90 regular worshippers at one or more of three services held each Sunday. Many people take an active role in welcoming others, reading lessons, preparing the altars, administering the chalice, and much more. St. Luke's, is closed from Christmas to Palm Sunday, but otherwise fully active.

Every year, the three congregations worship together at one or another of the churches, and members often share or support retreats, outreach initiatives, social gatherings and fundraising events.

Offerings fluctuate between the seasons and fund-raising events, but the parish meets its \$150,000.00 annual budget. The parish has no debts or outstanding financial obligations.

Bobcaygeon is a prosperous and attractive small town in a popular recreational area of southern Ontario. The churches of the Bobcaygeon, Dunsford and Burnt River parish were established early in the history of the area and, over the years, have exerted a strong Christian influence. The tradition of commitment, faith and action continues today.



Christ Church, Bobcaygeon

"To obey God and share the good news of Jesus Christ."

History

The first settlers in the Bobcaygeon area came from Britain in the early 1800s. When Thomas Need, a local entrepreneur, sold his land in 1844 he reserved a three acre parcel for a church. The land was deeded to the Diocese of Toronto in 1863, and a board and batten church, designed by the Irish architect John Belcher and capable of seating up to 250 people, was built. It was named Christ Church by Thomas Need when the cornerstone was laid. The church was dedicated by Bishop Bethune in 1871 (when the church bell arrived), and consecrated on September 13, 1881. The interior furnishings such as the pulpit, lectern and bible, cross, stained glass windows, etc., were provided by women of the church or received as memorial gifts.

A freestanding, multi-use parish hall, with kitchen and washrooms, was funded by the Ladies' Guild and built in the early 1900s. In 1991 it was linked to the church with a structure that incorporates a narthex, offices for an incumbent and secretary, a friendship room, washrooms, Sunday school space and a choir room. All areas are fully accessible.

Worship, liturgy and music

Services of morning prayer or eucharist are held on an alternate basis every Sunday at 11 a.m. (see Appendix "B"). On occasion they may include baptisms. Average attendance is 60. The service style is traditional with hymns, and The Book of Common Prayer or the Book of Alternate Services is used.

Congregational singing is lead by an organist and choir, and hymns are chosen from the book of Common Praise. On the fifth Sunday of the month, morning prayer is lead by a group of five musicians called Caygeon Spice who sing and play two guitars, a banjo and a keyboard.

Assisting the priest and lay reader at services are an organist/pianist, crucifers, servers, lay administrators of the chalice (of whom two are licensed to anoint at healing services), plus lectors and sides people. Members of the Chancel Guild prepare the altar, change the hangings, arrange flowers, decorate the church for special occasions and deliver flowers to shut-ins.

Special services

Several popular services are held on an annual basis at Christ Church. They include a service of Lessons and Carols on the Sunday before Christmas, and a choral eucharist on Christmas Eve. In Lent there are services on Ash Wednesday, Maundy Thursday and Good Friday. On a quarterly basis, there is a mid-week service for members of the ACW. Weddings and funerals are as needed.

Learning, spiritual Development and nurture

Sunday School: Christ Church has qualified and experienced teachers ready to re-activate the Sunday school. Classes are traditionally held in the parish hall during the 11 o'clock Sunday services from September to June.

Share the Passion: is a group whose purpose is to promote Bible reading. It holds a regular Wednesday morning study/discussion of Bible readings for the upcoming Sunday, hosts speakers from the Bible Society, and provides opportunities for people to purchase various versions of the Bible and companion reading guides.

Prayer Chain: prayer requests are relayed by telephone to members who offer special prayers for those in need.

Mutual support and fellowship

Anglican Church Women (ACW): 30 women committed to worship, study and service. They organize seven study retreats a year (each lasting 1 day at the church or 2 days at a resort), attend a quarterly eucharist and lunch, and sponsor fundraising events such as bazaars and bake sales. They also attend Deanery meetings and liaise with Diocesan ACW.

Knitter's Guild: a small group of women meet weekly for fellowship, teaching and tea. They are currently knitting "pneumonia caps and vests" to contribute to an ecumenical project to send 1000 caps and vests overseas next year to needy children.

Outreach Committee: with income from a monthly breakfast featuring special speakers, the committee has been able to sponsor a student in Honduras, provided funds for a local youth worker to support his/her work in Bobcaygeon schools, financed summer camps, and supported Sleeping Children Around the World.

Community Care sponsors a weekly "sages" class (a morning exercise and nutrition programme for seniors), held at Christ Church; and there is a food bank in the basement that is accessed by a private entrance and managed by a local group called Bobcaygeon Helps.

Pastoral care visitors

In addition to the pastoral care endeavours listed above, a group of dedicated members of the congregation, in cooperation with the priest, make regular visits to private homes, nursing homes and hospitals. Members also distribute palm crosses, participate in a prayer shawl ministry and mail cards to those who are bereaved or ill.





St. John's, Dunsford

"To obey God and share the good news of Jesus Christ."

An acre of land in the village of Dunsford (current population 200), was deeded to the church in May 1859, and a wooden church was built the same year at a cost of \$700.00. A 1,200 sq. ft. vinyl-sided, wood-frame parish hall was moved onto St. John's site in the early 1960's. It contains a small kitchen and a recently renovated bathroom, and can accommodate 50 – 60 people for various church and community functions.

The present brick church was completed in November 1882. It has two aisles, thereby creating three groupings of pews that comfortably seat 90 – 100 people.

Morning prayer and eucharist, using the BCP or BAS, are held at 9:30 a.m. on alternate Sundays in a traditional style. Morning prayer is led by a licensed lay reader, and music is provided by an organist. Average Sunday attendance is 20. St. John's also hosts an annual parish-wide Thanksgiving service and luncheon each fall.

St. John's has several new families and an active church school of 6 to 12 children of various ages. They leave worship during the gradual hymn and retire to the parish hall for instruction. On very cold winter Sunday mornings they gather at the back of the church to do "quiet" crafts.

Advent begins with the women decorating the church after morning service while the men cook breakfast to serve in the parish hall. A Christmas service is held on the Sunday evening before Christmas and the children take a beloved and significant part in the celebration.

The ACW operates informally: the women meet prior to special events to plan, discuss and organize activities. Fundraising is a year-round activity as witnessed

by a spring ham supper, a summer yard sale, a fall pork buffet (held at the Dunsford Community Centre for the wider community participation), and a Christmas Bazaar.

Pastoral care is informal as befits a longstanding farming community, with members always ready to celebrate the success of others, and to help in times of trouble, need, illness or death.





St. Luke's, Burnt River

"Acknowledging Christ's authority and His presence here with us, our mission is to – know God, share His love everywhere and teach others to follow Christ."

In the late 1800s, families in the Burnt River area who were interested in the English tradition of worship, gathered to worship in the Orange Hall in the village of Burnt River.

In 1903 a community "bee" was organized to quarry limestone to build a small 37' X 25' stone church, with a capacity of 50, on donated land in the village. The church was dedicated the next year, and a celebratory dinner hosted on May 24, 1904 marked the beginning of a spring fundraising dinner held every May long-weekend for 108 years. In 1967 a new west entrance and narthex were added to the church; and to mark the 100-year anniversary in 2003, the church was restored, the bell tower refurbished and a general purpose room and washrooms were added.

Since its inception, St. Luke's has relied on lay leadership. The congregation has at various times been part of the parishes of Kinmount and Fenelon Falls and, since the Diocesan restructuring in 1992, the parish of Bobcaygeon and Dunsford.

Morning prayer and eucharist, using the BAS, are held at 9:30 a.m. on alternate Sundays in a traditional style. Morning prayer is led by a licensed lay reader, and music is provided by an organist. Average Sunday attendance is 8 rising to 12 or 15 during the cottage season. Afterwards, a coffee hour provides an opportunity to greet newcomers and discuss parish business. St. Luke's also hosts an annual parish-wide outdoor service and luncheon each summer. In inclement weather this service is held at the local Community Centre, which is within walking distance.

Special services are held at the Burnt River cemetery on the Sunday prior to Remembrance Day, November 11th; and an evening Christmas Carol and Lessons Service, preceded by a Potluck Dinner at the Community Centre, is held each December to mark the end of the calendar year.

When there is a funeral, chairs and an audio feed are set up in the nearby fire hall for overflow guests, with refreshment offered at the Community Centre. When deaths occur in winter, it is not uncommon to hold memorial services, receptions and interment's later in the spring.

In 2015 and 2016 St. Luke's was closed from New Years Day to Palm Sunday. The Sunday school was temporarily suspended due to key families leaving.

Women at St. Luke's keep abreast of parish ACW opportunities, and they knit prayer shawls and look after the chancel. However, in this congregation, "ACW" stands for "Anglican Church Workers", in recognition of the fact that everyone helps to administer, raise money, maintain and equip the church. An annual yard and pie sale is the primary fund raiser.

Pastoral care is informal and spontaneous, and is extended to the entire tightly knit Burnt River community and nearby cottagers.



5. Human, Physical and Financial Resources

Human resources

The parish has a full-time priest, assisted by two licensed volunteer lay readers, a secretary/bookkeeper and an organist, both of whom are employed part-time.

There are many other “key” volunteers such as 6 wardens, a deputy warden, choir members, advisory board members, readers and others who assist during worship, group leaders, property managers, Synod representatives and a plethora of writers, telephoners and those who liaison with the community.

There are 98, 28 and 20 individuals on the Bobcaygeon, Dunsford and Burnt River parish lists respectively. Similarly there are 56, 21 and 13 identifiable givers.

The combined average weekly attendance is now 90, an increase from 80 that show on the attendance graphs in Appendix “C1-3”. Ages of attendees range from infants to the elderly frail, with the majority age being over 50 in Bobcaygeon and Burnt River.

With the exception of St. John’s, where new younger families have joined the congregation, there have been no new parishioners in the past five years. However, 2016 has been a year of healing that has resulted in a gradual return of parishioners to Christ Church who left during the previous two years.

The organization chart in Appendix “D” gives a quick overview of parish human resources.

Physical resources

St. Luke’s, Burnt River has a seating capacity of up to 50, plus a narthex, sanctuary, small sacristy, an all-purpose meeting room, washroom and a kitchenette. All are in excellent condition and fully accessible. Outside, there are gardens, hard surface walkways, handrails where necessary, a flag pole and bench, and adequate lighting. There is also extensive lawn surrounding the church and a shed for outdoor equipment. An outside water source and electric outlet are scheduled to be installed within the year. The main door of the church is within 5 metres of the municipal sidewalk, and is built at street level.

St. John's, Dunsford has a seating capacity of up to 100, plus a narthex and chancel with an organ. Adjoining the church is a parish hall/Sunday school room that can accommodate approximately 60 people, plus a full kitchen and washroom. The buildings are in excellent condition and fully accessible. Outside, there is a parking lot and two acres of green space. The church is built on a rise of land approximately 30 metres from the street.

Christ Church, Bobcaygeon can seat up to 250 people in the main worship space. It has a spacious narthex and a chancel with an organ and seating for a choir. There is a multi-use parish hall that can accommodate 125 people. In the basement, with a separate private entrance is a food bank. There are offices, washrooms, meeting rooms, a large entranceway and a choir room between the worship space and the parish hall. All are in excellent condition and fully accessible.

Outside there is a paved parking lot for 60 vehicles, a wide lawn and gardens. The church is situated approximately 20 metres from the street and built about a metre above street level.

Rectory

Next to the church, on a large treed residential lot at 45 Sherwood Street in Bobcaygeon, is a 2-storey, 2-bathroom, fully equipped, 4-bedroom rectory in which the priest and family are expected to live.



Financial resources

The combined 2015 revenue of the Bobcaygeon, Dunsford and Burnt River parish was \$163,437.00. After expenses were paid there remained a surplus of \$1,383. (see Appendix "E1-2") The 3 blue graphs in Appendix "F1-3" illustrate yearly offerings over the past decade for each congregation.

The parish owns the rectory and has no debts or future financial obligations.

6. Our Neighbourhood and Our Mission Field

Neighbourhood

Burnt River is a hamlet, on flat terrain, that consists of a cluster of 54 single family detached homes and two churches. The population is less than 150, and the age range is mixed. Some people are retired and others are young with families— all seeking affordable housing. Those who have jobs commute to work elsewhere. Beside the Burnt River and within half a kilometre of the hamlet, are an additional 70 homes, about half of which are used year-round.

The village has a large community centre with a lighted baseball field, a children's playground, and tennis courts. There is also a post office and fire hall. There are a few small farms nearby. Local industries are aggregates and construction. Children are bused to schools in other towns. Four Mile Lake is within three kilometre of the hamlet, and hundreds of cottagers travel through Burnt River to access their property. Most cottagers are seasonal dwellers, although each year more use their cottages for winter recreation, or retire to their cottages year round.

The village of Dunsford is located in rolling land at the juncture of two local roads, approximately 1 kilometre from a main highway. The village is the hub of a prosperous farm community and contains small shops and businesses to support the farmers. There is also a community centre, post office, elementary school and two churches. The village and farm population is 200 and is composed of a balanced mix of ages. Children are bused to high school in Lindsay.

The population of Bobcaygeon is approximately 3,000. The town is built on and around an island in the trent canal system and experiences a influx of tourists and seasonal residents each summer. For 25 years Bobcaygeon has marketed itself to retirees. As a result, the average age of the population is over 50. Though most people live in single family homes, there are several condominiums, some small apartment buildings, and two retirement, assisted living and long term care homes.

The town is a service centre for residents, outlying farmers, seasonal dwellers and tourists. There are many thriving small businesses and professional offices. The unemployment rate is low compared to the national average. Bobcaygeon is also a centre for the arts and recreation with active service clubs, good schools,

a library, museum, live theatre, a large municipal complex, and a centre for sports that includes an arena and swimming pool. All are enhanced by an extensive park system by the Trent Canal and several public beaches.

Christ Church and the rectory are located on a tree-lined street in a desirable residential neighbourhood that is within easy walking distance of the downtown commercial district, local parks and the canal.

Sir Sanford Fleming Community college, in Lindsay, is a half an hour drive south west from Bobcaygeon. There is also a French immersion elementary school in Lindsay. Trent University, in Peterborough, is an hour drive east of Bobcaygeon. Both cities have excellent regional hospitals.

The people of the parish are unilingual English, homogenous with an average or above average level of education. The vast majority live in single family homes. Most are married and have families, though often their grown children have moved from the area. Those who are single, or who live alone or in multiple family dwellings, are either young people at the beginning of their careers or, most likely, older individuals.

On the whole, the three parish worshipping communities reflect the communities in which they are located.

Opportunities and challenges for ministry in the neighbourhood now

The parish neighbourhoods have a long tradition of Christian experience and acceptance. This opportunity presents a challenge to re-activate and energize latent Christianity in a meaningful way.

The multi-point nature of the parish, and the distances between congregations, can be considered an opportunity to understand the “sorts and conditions” of a cross section of rural society. The challenge is to overcome driving distances, and create a common feeling of belonging in a physically disparate parish family.

Today, people are mobile, technologically savvy and busy. This opportunity offers a challenge to use technology for clear, quick communication in both worship, outreach and organization. Also, mobility can bring flexibility and convenience, and “busy-ness” offers an opportunity to provide peace and perspective.

Seasonal members represent opportunity because they can bring ideas and insights and “best practices” from other people and places. Many are likely to morph into full time residents. The challenge is to meet them in their own environments, provide them with a compelling Christian link to their city homes while at the same time garnering, using and appreciating their talents so they do not feel like outsiders.

A community of seniors is an opportunity because they generally have more time to become involved in the church, and may seek the companionship and hope it offers. The challenge is to provide transportation and hearing devices; and use senior’s time and energy wisely because they may have health issues or lack mobility.

7. Outreach and Evangelism

The members of Christ Church, St. John’s Church and St. Luke’s Church identify needs in their communities by personal observation, listening to others, speaking with families, caregivers and social agencies, and by reading reports, statistics and newspapers.

Christ Church houses a community food bank, and all the congregations provide modestly priced community dinners. They also hold annual yard sales that include used furniture and clothes.

The congregations invite and welcome all people in their neighbourhoods — especially those who are lonely or in need — to their church services and social functions. Various groups, such as the ACW, prayer shawl ministry, pastoral care team, and outreach committee all reach out to others in distinctive ways.

Bible study and the interim priest’s sermons (heard in the churches on Sundays and/or viewed anytime on U-Tube), are worthy of note. Physical, mental and health initiatives include a weekly expertise and nutrition class for seniors, a prayer link, laying on of hands and pastoral visiting. All church buildings are fully accessible, and there is a PA system at both Christ Church and St. John’s.

Most parishioners are active volunteers in other organizations or groups in the neighbourhood such as Friends of the Library, coaching hockey, baseball and soccer, the Museum Board, Meals on Wheels, Rotary Club, the Senior's Centre, Parent Council, volunteer Fire Department, Chamber of Commerce, Boys and Girls club, the Art Gallery and Long Term Care facility.

The congregations invite others to join them by means of personal contact, the social media, Besorah parish news (published quarterly), BRAG (Burnt River Area Guide), notice distribution, parish website and special music events. Worship schedules are publicized, and the churches have prominent signage with a welcoming message.

The three congregations worship together three times a year: during Holy Week observances in Bobcaygeon, a summer outdoor service in Burnt River, and fall harvest thanksgiving festival in Dunsford. Congregations advertise and support each other's fund raising and social events. They are specifically planned to appeal to the wider community, and present opportunities to tell others about the mission and work of the church.

Prayer is a focus of worship. Most meetings begin with prayer; and, during worship, special prayers are offered for those in need, trouble, ill health or upon request.

Bobcaygeon, Dunsford and Burnt River parishioners are culturally averse to drawing attention to themselves or embarrassing others. They are people of quiet steady faith who witness primarily by example and in one-on-one situations within a wider community of people who know about Jesus, although perhaps not in the personal way desired. Parishioners work in cooperation with the priest and those licensed for laying on of hands. The Share the Passion committee spearheads congregational evangelism.

Augmenting the efforts of committed individual Christians, parish Bible study groups, website information (christchurchbobcaygeon.com), music, drama, gentle prompting during worship, and liturgical teaching all help new Christians to grow in their faith.

The parish is comfortable reaching out to those who have felt damaged by the church, and has made a determined effort to do so. As a result, 2016 has been a year of healing, and Christ Church is welcoming back those who felt hurt by negative experiences in the past.

8. Present Reality and Future Vision

In determining the present reality of the parish, the selection committee conducted surveys of members and adherents, held focus groups, completed questionnaires, consulted all parish organizations, researched their communities, and ranked priestly core values. They also “looked back”: vestry minutes were reviewed, attendance statistics were analyzed, and financial records examined. Mistakes were evaluated and successes quantified. Committee members “looked forward”: they took stock of all physical assets, demographics, skills and talents, and future earning potential.

Significant outcomes of information and understanding

The single most important thing learned was that people are willing to forgive and move forward with optimism and determination; and that to do so they need dedicated leadership. The surprise is how very strong and united the congregations are in this regard.

This is confirmed not only by anecdotal evidence, but is also reflected in surveys and other consultations.

The parish has been very successful in preserving its historical structures, in contributing to social and cultural initiatives in the wider communities, and caring for those who mourn or suffer traumatic events. This speaks to the fact that the past is respected, the present embraced, and the parish family is empathetic and supportive.

The worst failure is that the parish has let its Christian message of hope, redemption, and faith in a personal God who cares and strengthens people when they are experiencing temptation, despair or loneliness to be overwhelmed by a society that is indifferent to the church and often considers it irrelevant. It is obvious that new ways to share faith and strengthen worship must be found.

Going forward

The congregations of the parish are poised to welcome a priest who will work with them in an organized, prayerful and effective way to reach out to others in

their communities so that the good news of God's love and strength can be widely known and embraced. There are people of deep faith and conviction ready to take on this task. With confidence that flows from good leadership, and being continually mindful of the perils of slipping back into old mindsets that have hampered progress in the past, they know they will succeed.

The parish of Bobcaygeon, Dunsford and Burnt River has an opportunity to shed the pessimism and fatalist thinking of the past few years, and take its dutiful place as a participant and leader in the community under the banner of Christ. Some of these opportunities are outlined in section 7. Others become apparent week by week as revealed by God.

9. Our priest

The three most important gifts that are already abundantly present among the lay leaders and members of the parish are the gifts of perception, patience and perseverance. The three most important skills are mediation, organization and hospitality.

The three most important gifts that are sought in a new priest to support, complement and develop the ministry and mission of the congregation are understanding, cooperation and healing. The three most important skills are communication, administration and preaching.

Word picture

The priest who is sought is someone who is a strong enthusiastic communicator, grounded in sound theology with extensive knowledge of the Bible, who can engage and inspire others; who has talent and appreciation for music; and who is prepared to use both the BCP and BAS for morning prayer and eucharist.

It is important that the priest be ready and willing to be a visible participant in the wider community; and cooperate with other church leaders and local government and business leaders.

The priest who is sought is someone who sets goals with parish leaders and has discipline to achieve them; who can bring perspective and tact to controversial issues and situations; and is a willing, calm and helpful counsellor in times of crisis.

The priest is also someone who is undaunted by winter driving conditions and cold dark mornings; and is tolerant of undesired interruptions.

Appendix

“A”	map of area with web links
“B”	service schedule
“C 1-3”	yearly attendance charts for each congregation
“D”	organization chart
“E 1-2”	statements of revenues & expenses for each congregation
“F 1-3”	offering chart of givings over the past decade

Appendix “A”

Related websites: www.city.kawarthalakes.on.ca
www.explorekawarthalakes.com
www.bobcaygeon.org
www.lindsaychamber.com
www.fenelonfalls.info
<http://www.christchurchbobcaygeon.com>



Appendix “B”



Worship Schedule

CHRIST CHURCH, BOBCAYGEON (average weekly attendance 64 people)

First	11:00 a.m. Eucharist (BAS) – led by incumbent
Second	11:00 a.m. Morning Prayer (BCP) – led by incumbent
Third	11:00 a.m. Eucharist (BCP) – led by incumbent
Fourth	11:00 a.m. Morning Prayer (BAS) – led by incumbent
Fifth	11:00 a.m. Morning Prayer of Song featuring <i>CaygeonSpice</i> - <i>led by incumbent</i>

ST. JOHN’S, DUNSFORD (average weekly attendance 20 people)

First	9:15 a.m. Morning Prayer (BAS/BCP) – led by incumbent
Second	9:15 a.m. Eucharist (BCP) – led by incumbent
Third	9:15 a.m. Morning Prayer (BAS/BCP) – led by incumbent/lay reader
Fourth	9:15 a.m. Eucharist (BAS) – led by incumbent
Fifth	9:15 a.m. Morning Prayer (BCP) – led by incumbent/lay reader

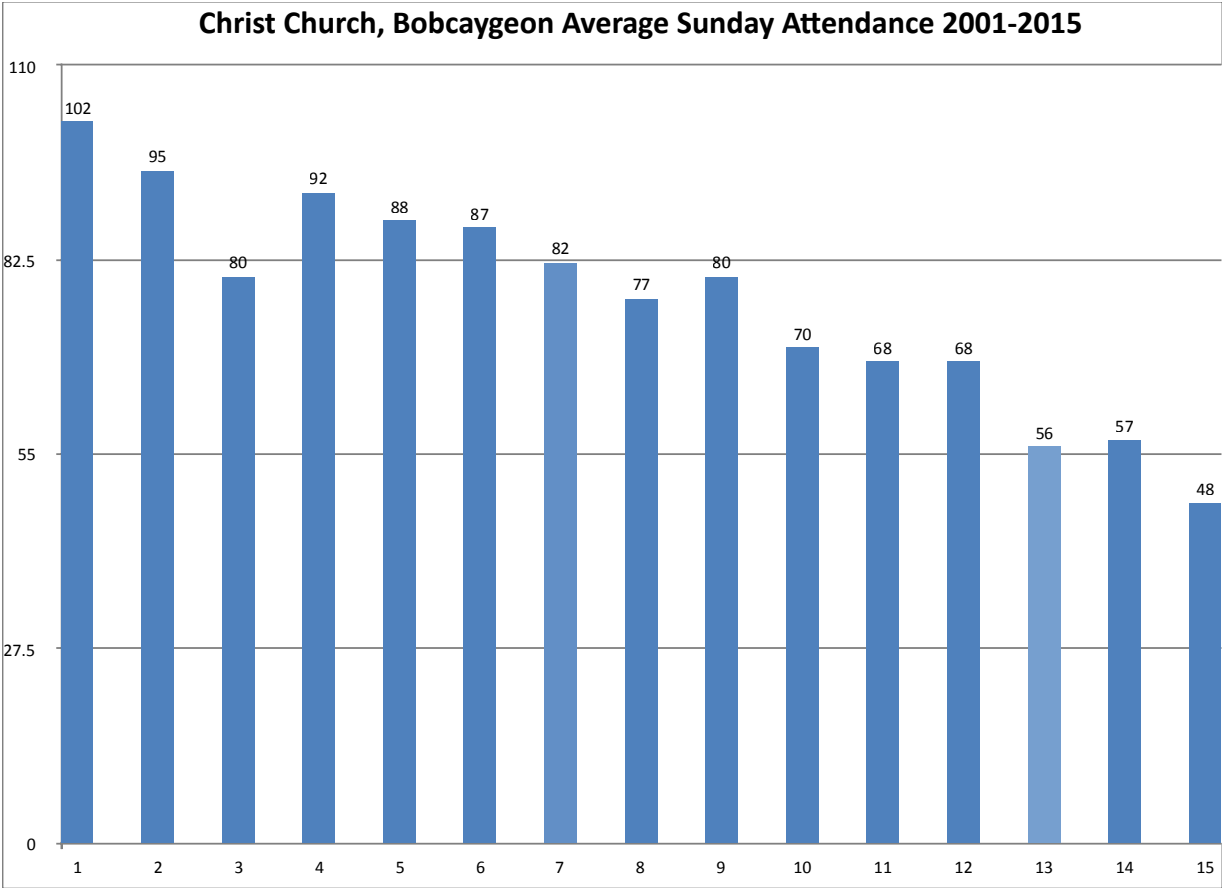
ST. LUKE’S, BURNT RIVER (average weekly attendance 8-12 people)

First	2:00 p.m. Eucharist (BAS) – led by incumbent
Second	9:30 a.m. Morning Prayer (BAS) – led by incumbent/lay reader
Third	2:00 p.m. Eucharist (BAS) – led by incumbent
Fourth	9:30 a.m. Morning Prayer (BAS) – led by incumbent/lay reader
Fifth	2:00 p.m. Morning Prayer (BCP) – led by incumbent/lay reader

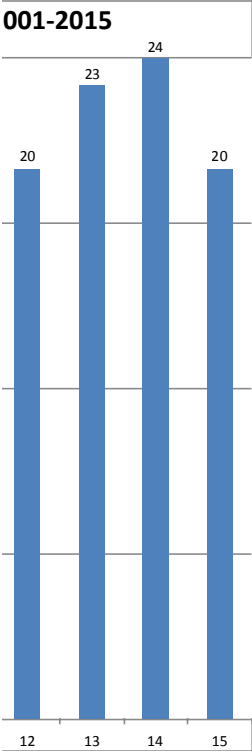
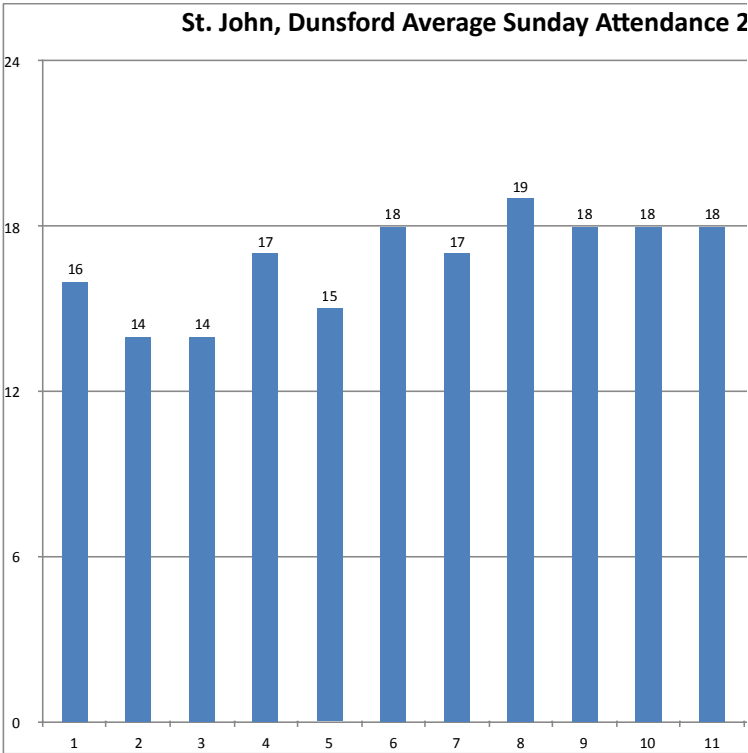
NURSING HOME SERVICES

There are two nursing homes located in Bobcaygeon. A monthly Eucharist is celebrated at Pinecrest, with a Christmas and Easter Eucharist celebrated at Case Manor.

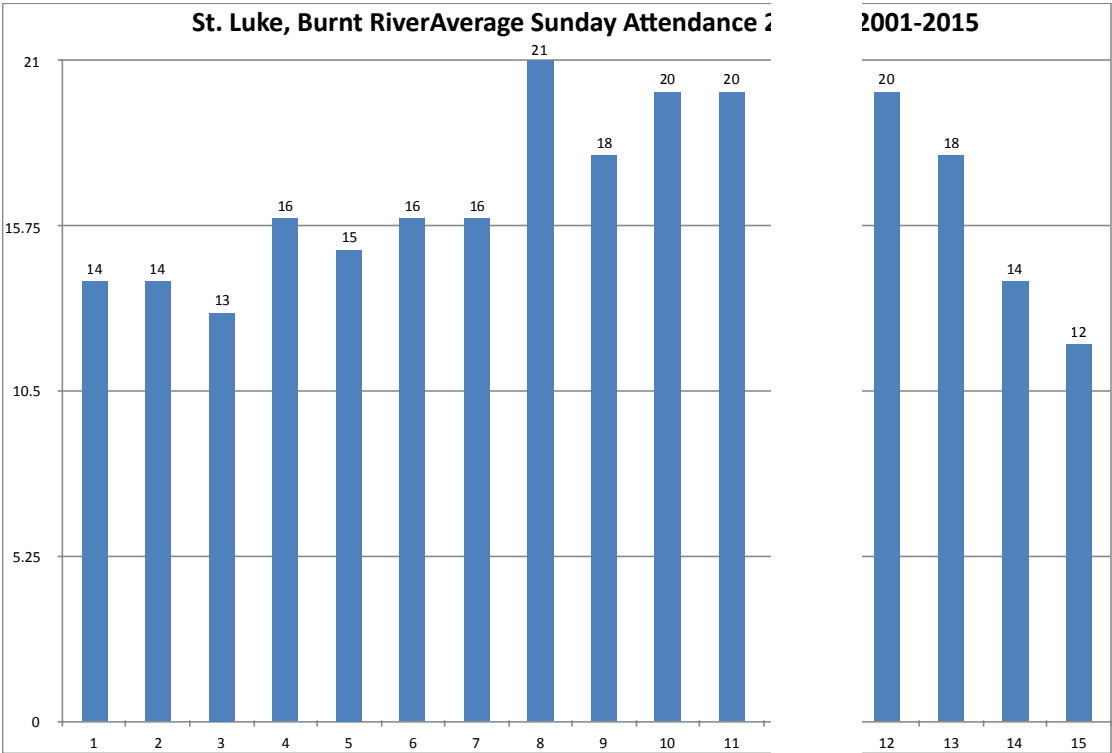
Appendix “C-1”



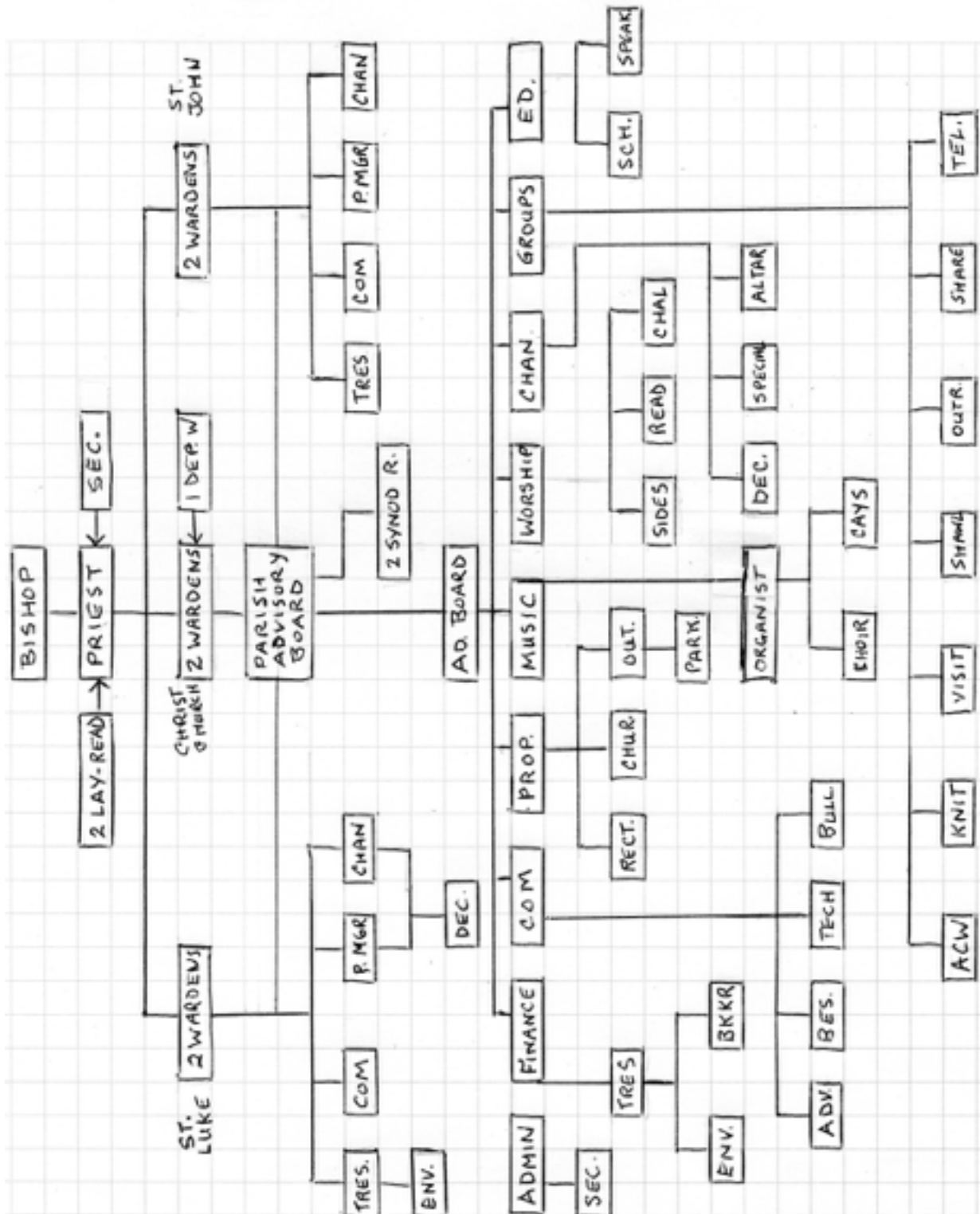
Appendix “C-2”



Appendix “C-3”



Appendix “D”



Appendix “E-1”

Parish Finances

Parish of Bobcaygeon, Dunsford & Burnt River

Christ Church,
Bobcaygeon

General Operating Fund

Year Ended December 31

	<u>2013</u>	<u>2014</u>	<u>2015</u>
Income			
Congregational Givings	84,413	89,377	93,193
Fundraising	11,849	10,890	8,534
Hall Rentals	6,009	7,336	7,564
Inter-Fund transfers	-	-	-
Other	9,193	15,555	11,078
Total Income	111,464	123,158	120,369
Expenditures			
Personnel Costs	38,830	73,668	74,641
Property Costs	38,594	46,614	35,997
General Operating	33,352	37,963	35,608
Other	787	892	622
Total Expenditures	111,563	159,137	146,868
Surplus(Deficit)	-99	-35,979	-26,499
Parish Shared Expenses	26,829	28,742	26,656
Net Surplus (Deficit)	26,730	-7,238	157

2013 Rev. Nirmal Medis - Interim
was paid by Diocese of Moosonee

Appendix “E-2”

Parish Finances

Parish of Bobcaygeon, Dunsford & Burnt River

St. Luke's Burnt River

General Operating Fund

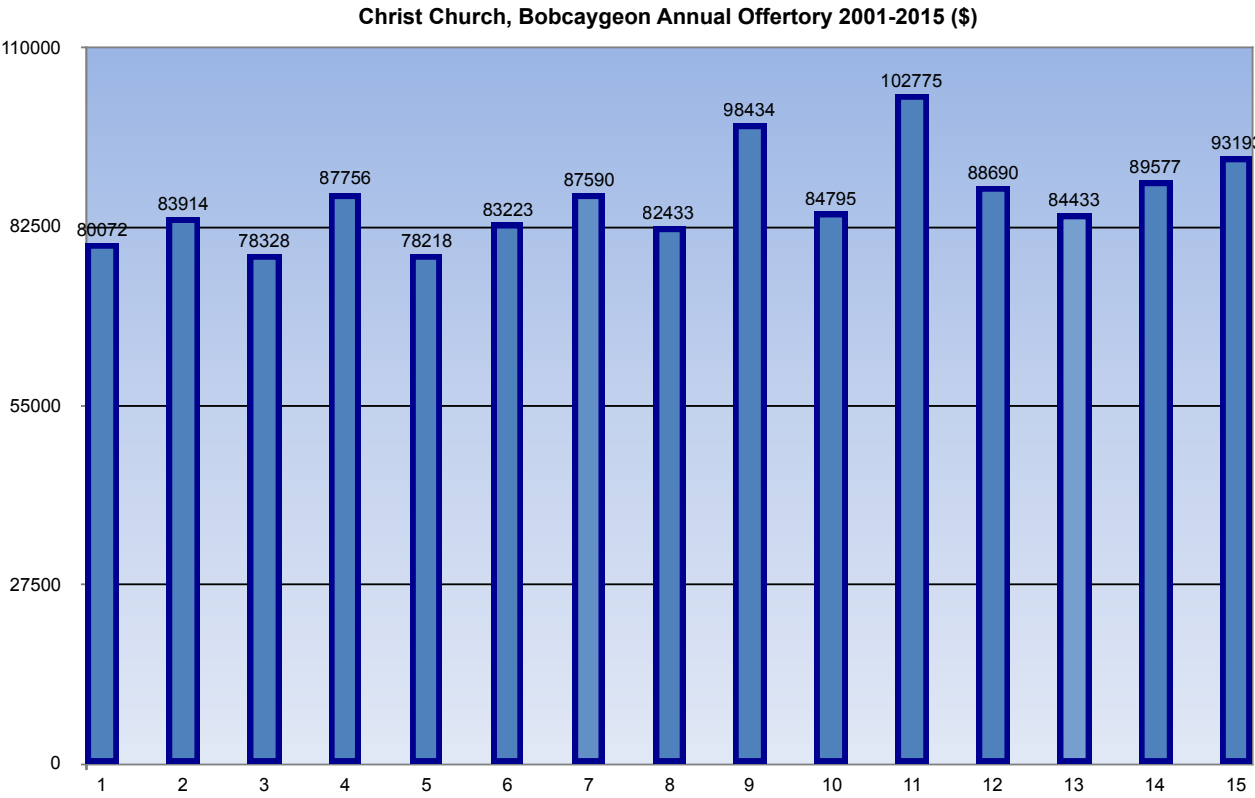
Year Ended December 31

	<u>2013</u>	<u>2014</u>	<u>2015</u>
Income			
Congregational Givings	13,373	18,934	11,671
Fundraising	1,133	3,444	4,211
Other	1	1,024	
Bequest		5,000	
Total Income	14,507	28,402	15,882
Expenditures			
General Operating	5,742	10,564	5,290
Parish Shared Expenses	13,380	14,400	12,256
Total Expenses	19,122	24,964	17,546
Surplus (Deficit)	-4,616	3,438	-1,664

St. John's Dunsford

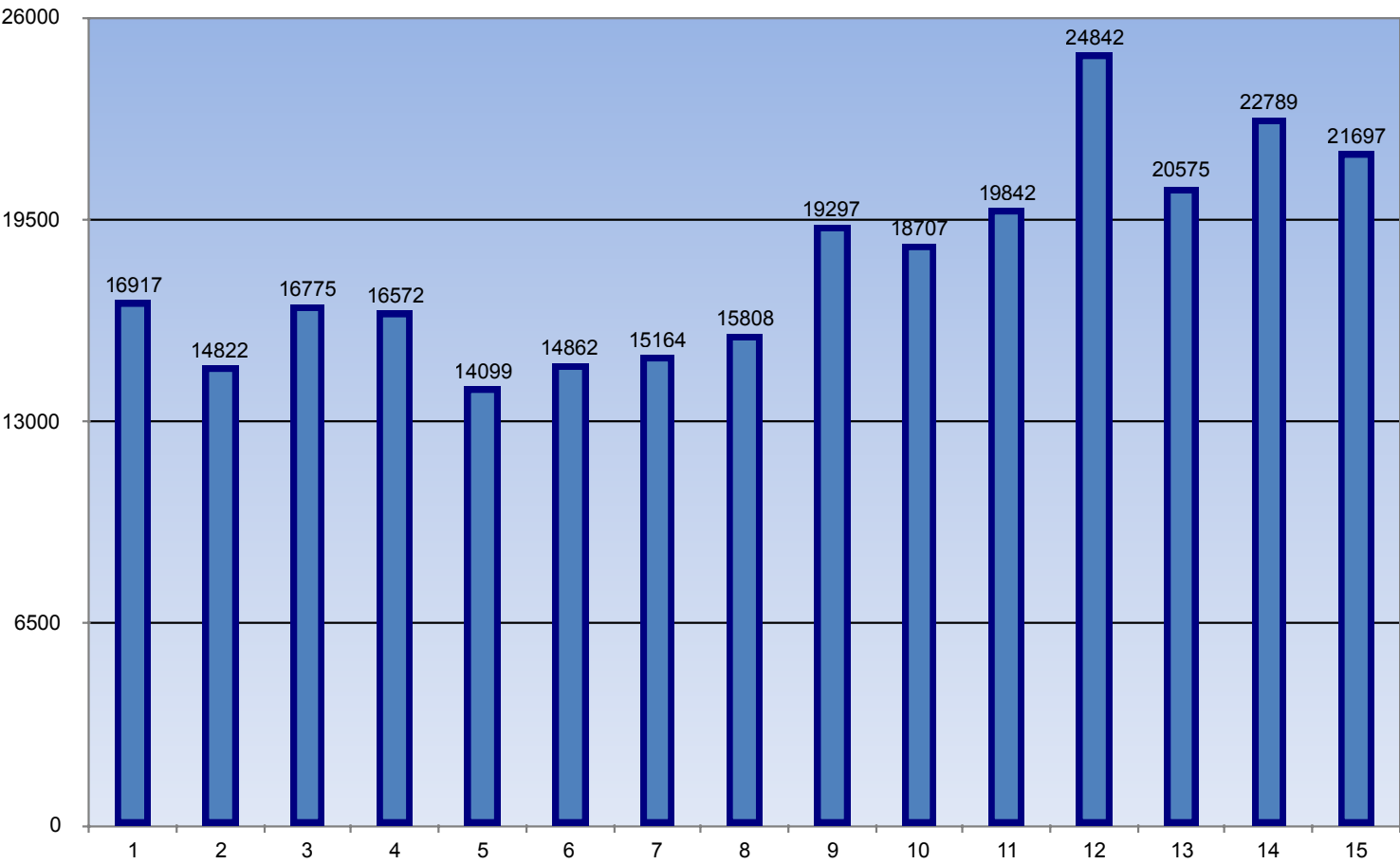
Income			
Congregational Givings	20,776	22,789	23,703
Fundraising	150	1,515	3,483
Other	60	130	-
Total Income	20,986	24,434	27,186
Expenditures			
Personnel Costs	1,320	1,650	1,590
General Operating	8,413	7,604	10,001
Parish Shared Expenses	14,049	14,342	12,705
Capital Expenses	-	-	-
Other	145	60	
Total Expenses	23,927	23,656	24,296
Surplus (Deficit)	-2,941	778	2,890

Appendix “F-1”



Appendix “F-2”

St. John, Dunsford Annual Offertory 2001-2015 (\$)



Appendix “F-3”

