

**St. Joseph of Nazareth  
Anglican Church  
Parish Profile 2020**

## Parish Selection Committee Prayer

*Dear God, thank you for these your servants  
who you have called to serve on the Parish  
Selection Committee, Diana, Janet, Colin,  
André Fenty and André Lyn.*

*We pray that you will guide, keep and sustain  
them as they pray, discuss and discern who  
you have chosen to be the next Incumbent for  
our Parish of St. Joseph of Nazareth.*

*We pray also for their coaches, Bro Reginald  
and Orphtee who are supporting, facilitating  
and shepherding them through this process.*

*Lord, we also pray for Bishop Jenny who will  
have the final say in deciding our next  
Incumbent.*

*Lord, we pray for ourselves as parishioners,  
that you will give us patience to prayerfully  
and reverently uphold the Committee, and  
also the love and grace to continue serving in  
this place at this time.*

*All these mercies we ask in your Name.  
Amen.*

## Table of Contents

<a href="#"><u>Executive Summary</u></a> .....	3
<a href="#"><u>Worship, Liturgy and Music</u></a> .....	5
<a href="#"><u>Mutual Support and Fellowship</u></a> .....	7
<a href="#"><u>Pastoral Care</u></a> .....	8
<a href="#"><u>Future Direction Priorities</u></a> .....	9
<a href="#"><u>Our Neighbourhood and Our Mission Field</u></a> .....	11
<a href="#"><u>Outreach</u></a> .....	12
<a href="#"><u>Our new Incumbent should</u></a> .....	14
<a href="#"><u>Human, Physical and Financial Resources</u></a> .....	15
<a href="#"><u>Appendices</u></a> .....	19

## St. Joseph of Nazareth Parish Selection Committee

Colin Fleming – Committee Chair

Janet Bertollo – Rector's Warden

André Lyn – People's Warden

Diana Stumpf

André Fenty

## Mission Statement

*Our Church Active Together: In witness to Christ as Lord and Saviour, in Worship, in  
Spiritual Growth and in Outreach.*

---

## ***Executive Summary***

---

We are a vibrant Anglican parish in a growing part of Ontario, and we are excited about what God has in store for our future. While we have a stable congregation, we need a visionary leader who will work with us to grow our congregation with younger families, lead the transformation of our building, and help us reach more and more of the people who are moving into Brampton with the love of Jesus. Might God be calling you?

**St. Joseph of Nazareth is a warm and welcoming Christian community that is always ready to invite others to the Table. Come and be nourished, feed your body, mind and spirit. No reservations needed!**

Since celebrating its first service in 1960, St. Joseph of Nazareth Anglican Church has been ministering and serving families in its immediate community of Bramalea and wider community of Brampton. Newcomers to St. Joseph are made to feel welcome. Our church promotes relationships and fosters a feeling of belonging in one large extended family.



The number of registered parishioners is approximately 200 families from diverse backgrounds, and ethnicities and languages. While a significant percentage of our congregation are seniors we have a good balance of young families with youth and children who are regular and active. It is this mix of ages and cultures that makes our church a reflection of God's grace and love that keeps **Our Church Active Together**.

**In Witness to Christ as Lord and Saviour**, the establishment of strong family ministries is one of our future priorities. We are always striving to diversify our ministries to be more inclusive of the diversity and spiritual journey of the congregation.

**In Worship**, the gospel is proclaimed and celebrated and where we meet Jesus in word and sacrament. We embrace our diversity using word, music, dance, drama and the arts to create different opportunities and ways of worship expression. We encourage all ages and abilities to participate in our services.

As a caring, loving church community, we endeavour to meet people where they are on their spiritual journey and encourage the development of new ministries to support all **In Spiritual Growth.**

As a church we acknowledge that faith without work is dead and understand that because of our many blessings we have a responsibility to feed the hungry, both spiritually and physically. We have set for ourselves a number of priorities for a God-centred future. Our transformation project, underway for several years now, is aimed to ensure greater accessibility for parishioners, visitors and members of the community and to create a space to allow for greater work **In Outreach** and embracing our local community.

The Incumbent will need to embrace the transformation project in a way consistent with the energy and excitement demonstrated by the vast majority of parishioners. This project has become a priority that our parishioners look forward to with anticipation as a key to unlocking the future potential of St. Joseph of Nazareth as salt and light in the Bramalea community. A new Incumbent will bring clarity and direction to re-engaging the planning committee, connecting with architects and supporting fundraising efforts necessary to bring the project to reality.

Our new Incumbent is expected to bring energy and enthusiasm, deep spirituality, and an understanding of leading through serving. Our new Incumbent is expected to cultivate an environment that nourishes, feeds bodies, minds and spirits. Our new Incumbent is expected to embody our church's mission statement:

Our Church Active Together,  
In Witness to Christ as Lord and Saviour,  
In Worship,  
In Spiritual Growth,  
In Outreach

---

## ***Worship, Liturgy and Music***

---

### **Worship & Liturgy**

St. Joseph of Nazareth is a vibrant Christian community and one of five Anglican Churches in Brampton. We find joy, peace, guidance and purpose because of our relationship with Jesus Christ. St. Joseph has a diverse congregation and offers a range of weekly services:



#### **Sunday Morning Worship**

8:30 am – Holy Eucharist (Alternating weekly between BCP & BAS)  
(*average attendance - 34 members over the past 5 years*)  
10:30 am – Choral Eucharist with Organ & Piano / Sunday School (BAS) –  
Children's Time (*average attendance - 112 members over the past 5 years*)\*  
Every 3<sup>rd</sup> Sunday of the month - Healing and Anointing service  
Every 4<sup>th</sup> Sunday of the month we have an Intergenerational service

#### **Wednesday Morning Worship**

10:00 am – Holy Eucharist (BCP) (*average attendance – 16 members over the past 5 years*)\*\*

#### **Friday Night Worship – Messy Church (Food, Fun & Faith)**

6:00 pm – Family service catering for young families with fun activities for everyone which is held on the last Friday of the month. (*average attendance - 24 members over the past 5 years*)

#### **Major Feast Days \*\*\***

Christmas (*average attendance - 310 members over the past 5 years*)  
Easter (*average attendance - 318 members over the past 5 years*)  
Pentecost (*average attendance - 157 members over the past 5 years*)



We are blessed that parishioners are able to and willingly assist in different areas of Worship. Deacon Mark occasionally preaches and along with the Lay Assistants set the altar, will read the psalms and gospel. Several members of congregation will read lessons, lead intercessions, lead bible study and are chalice bearers.

## Music

The music ministry at St. Joseph of Nazareth is an integral part of our Worship life. The Incumbent and the organist organize music for our services. Typically, the music reflects the weekly Lectionary readings and the church seasons taken from the Common Praise Hymnal as well as other music sources that help to make our services uplifting and spiritually refreshing. The Choir Director/Organist and the faithful Choir members present an anthem at the 10:30 am service. Other musical instruments such as the harp, violin, cello, guitar, flute, trumpet and percussion instruments are sometimes incorporated into our 10:30 services.



Our Choir Director organizes concerts with other Choirs and musical groups to perform at and as a fundraiser for St. Joe's.

### Notes:

- 1) \* Includes Sundays where there is 1 joint service at 10 am (Vestry/Outdoor/Welcome Back BBQ)
- 2) \*\* Wednesday service average does not include Ash Wednesday.
- 3) \*\*\* Christmas and Easter include multiple services (Christmas Eve and Christmas Day – Easter Vigil and Easter Sunday)



## ***Mutual Support and Fellowship***

At St. Joseph, everyone is welcomed to the church the moment they enter the front doors by our Greeters. The Greeters especially welcome newcomers and parishioners



will extend a warm welcome to them. You will regularly see parishioners introduce themselves, exchange handshakes and even an embrace during The Peace. As followers of Christ, we want to grow our relationship with God and help others become Jesus' disciples.

Newcomers are encouraged to join us downstairs for Coffee Hour after the service. Coffee Hour is an integral part of community building, through fellowship. During this time of fellowship, newcomers and regular parishioners get to interact with each other, fostering closer relationships and supporting one another in their spiritual and personal journey. We also encourage young families with children to join Sunday School and to attend "Food, Fun and Faith", a casual, intergenerational church experience also known as "Messy Church".

Parishioners are dedicated to both the Church and broader church community. Each year we hold a Spring Fashion Show and a Christmas Bazaar, both of which are fundraisers, and community-building through fellowship. Both draw attendance and participation from



many members of our surrounding community, who interact with each other and parishioners. Through signage, distribution of flyers and door-to-door canvassing, we also encourage our surrounding community to attend our Summer Outdoor Service, typically held in early June.



---

## ***Pastoral Care***

---



With an aging population, St. Joseph established a Pastoral Care Ministry for serving that population. This Ministry, which comprises five dedicated Parishioners supported by the Incumbent and Deacon meet bi-monthly. The team leader, who is a Parishioner, is responsible for keeping the list of homebound parishioners updated regularly.

This team of caring and prayerful individuals provides the homebound, elderly and sick with spiritual support and comfort through visits and phone calls. To mark significant liturgical celebrations such as Easter and Christmas, cards are also sent to those who are unable to attend church. Thanksgiving, birthday, get well and sympathy cards are also sent in the spirit of keeping Parishioners connected to the church family.

In coordination with Pastoral Care, many parishioners keep in regular contact with homebound and sick parishioners by way of weekly phone calls, running errands and driving them to church. This spiritual support helps to maintain a deeper connection to Jesus Christ.



Church services are held monthly at Tall Pines Long Term Care Home and Greenway Retirement Home, which can be attended by residents and their loved ones. Residents enjoy an hour of worship through song, scripture readings, a sermon and the sacrament of Holy Communion. These services are also open to parishioners who may visit before and after with the residents.

There is a strong and longstanding prayer chain ministry at St. Joseph. It is comprised of a very dedicated group of parishioners, known as Prayer Warriors, who pray daily for the sick or any special prayer requests. Several of the Prayer Warriors also meet at the church monthly, simply to pray together.



---

## ***Future Direction Priorities***

---

### **Transformation Project**

There is a sense of urgency for the Parish to move forward on the Transformation Project that has been underway for several years. This is to ensure greater accessibility by parishioners, members of the community and



visitors with limited mobility and with or without a mobility device to all spaces. While the worship space is accessible, the lower hall and Sunday School/upper hall, choir room, Deacon's office and servers' room are not accessible for people with limited mobility. This limits their participation in social activities. The top priorities for the Transformation Project are fundraising, working with developers to determine funding and building options, working with the Architect and Landscape Architect to modify accessibility options. We have faith that with God's help we will succeed with this Transformation Project.

### **Establish a Family Ministry**

With an aging congregation and a strong desire to sustain and grow the parish, the current priority is to develop strong children, youth and seniors ministries. The establishment of a family ministry has been recommended as a strategy to develop, build, grow and integrate in a more cohesive way, the full cycle of parish life, by expanding the emphasis to have a variety of ministries that



include people in the 20-60 age range. Strategically, these are the parents and maybe grandparents of children and youth who could attend Sunday school and youth group or are the children and grandchildren of our seniors. They have the strong potential to

contribute creatively in a variety of ways to the life and work of the parish – volunteer, lead, attend and nurture ministries and activities as well as contribute financially.

### **Enhanced Music Ministry**

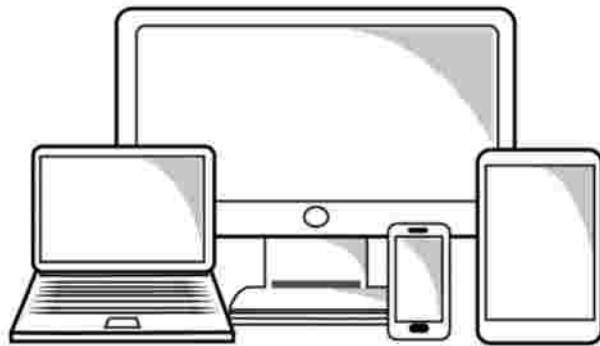
Have a greater variety of music and in particular up-beat music and instruments to be more inclusive of the diversity and spiritual journey of the congregation. Considerations for an enhanced music ministry include a band, junior choir, dance, as well as praise and worship services.

### **Spiritual Growth**

Be intentional and deliberate about meeting people (i.e., of all ages, new or long time parishioners, new or long time residents of Brampton/Canada, etc.) where they are on their spiritual journey and creating opportunities for growth and deeper spiritual relationships through a variety of ways (e.g., small groups, interest groups, intergenerational activities, adult Sunday school, etc). Also, nurture and encourage the development of new ministries to support spiritual growth and to demonstrate our faith in Jesus Christ.

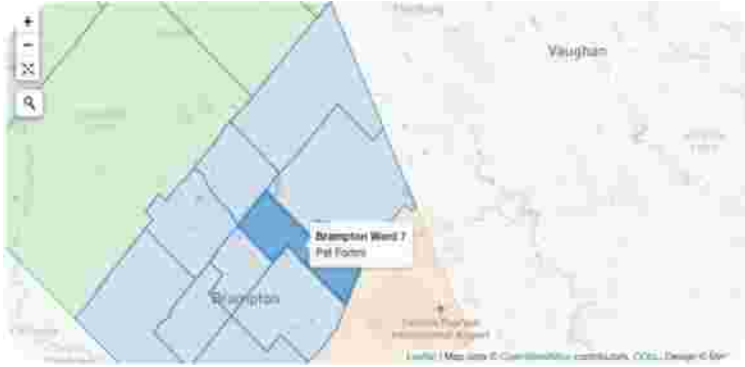
### **Technologically Integrated**

The forced closure of churches due to COVID-19, led St. Joseph and many other churches to immediately adapt and/or expand their technology capabilities to carry on worship and other ministries. This has been readily accepted and has allowed us to stay connected with each other. Many other benefits have become apparent including, connecting with seniors and those who would not have been able



to attend services regularly, reaching our local community and beyond, and allowing people to worship in a time and space that is convenient to them. Becoming more fully technologically integrated is now a priority for us to be prepared to enter the “new normal”. This will require proper equipment to record and livestream services, improved sound and lighting, more screens, and working speakers in the Narthex and other areas of the Church so people can better participate. Other ministries will naturally evolve from this such as technical teams, and production ministries, and the opportunity to share devices and technology education to seniors.

## ***Our Neighbourhood and our Mission Field***



St. Joseph of Nazareth is located on Balmoral Drive, and is bordered by Dixie Road to the west, Bramalea Road to the east, Steeles Avenue to the south and Queen Street to the north. The church falls within the electoral boundary of Ward 7 and is nestled in the L6T postal code area. This is a residential

neighbourhood that is comprised of primarily detached houses, townhouses, public schools, the Balmoral Recreational Centre and a public trail with a creek that leads to the biggest shopping Centre in Brampton – Bramalea City Centre. Both the schools and the trail provide a lot of foot traffic within the vicinity and onto the church property.

### **The 2016 census data for ward 7 shows:**

- Population of 56,750
- Median age of 40
- Majority of the residents, 92.6% speak English only
- The top 5 immigrant places of birth are
- India (22.8%) | Jamaica 7.8% | Philippines 7.8% | Pakistan 7.0% | United Kingdom 6.8% |

### **Of the approximately 200 families that are on our parish list:**

- 32% (60) live in the L6T area
- 41% (76) live elsewhere in Brampton
- 27% (51) live outside Brampton.

### **The top five countries of birth for immigration to Brampton are:**

- India 40.0%
- Jamaica 7.5%
- Pakistan 6.2%
- Philippines 4.7%
- Guyana 4.5%

This provides us with an opportunity to strategically reach out and welcome them into the parish, especially given the diversity of our parish.

---

## ***Outreach***

---

The parishioners of St. Joseph give generously and lovingly to the community through our outreach ministry. We have embraced and are living out the call to feed, clothe and look after those who are in need in response to, “Whenever you did this for any of my people, no matter how unimportant they seemed, you did it for me (Mathew 25:40 – Contemporary English Version).

The outreach ministry at St. Joseph has over the past several years, been supporting a number of local service agencies as well as reaching out directly to people in our community. This has involved:

### **Food Drive**

Food collected during Lent and at Thanksgiving is donated to Knights Table, a foodbank in Brampton. We will also do emergency food drives for Knights Table when their food supplies are low.



### **School Supplies Drive & Knitted Winter Essentials**

An annual backpack and school supplies drive is held in our parish at the start of the school year in September. The donated backpacks are blessed along with those of children and adults in the parish and are donated to two (2) shelters – Interim Place and the Salvation Army Honeychurch Family Life Resource Centre both of which are emergency shelters for women and children facing violence and abuse. Both shelters also receive mittens, scarves and socks that

parishioners make and donate at Christmas. The Salvation Army Honeychurch also receives donations of personal care supplies for the women in their shelter.

## Sharing the Joy

Sharing the Joy provides food, clothes, toys, gift cards and other supplies to families within our community at Christmas. In 2019, as part of this ministry, a cash donation was made to the Bramalea Secondary School to support students in need.

## FaithWorks

We continue to make annual donations to FaithWorks and in times of national, provincial and international disasters supported special appeals through Primates World Relief and Development Fund (PWDRF). Over the past years, we have provided cash donation to support relief efforts related to the Hurricane in the Bahamas and the Forest Fires in BC.



## 30-hour Famine

The parish has generously sponsored the youth who participate in the 30-hour famine to raise awareness and funds for the many in our world who suffer from hunger. The funds raised go to World Vision in support of their work to combat poverty and hunger.

## The Bridge

Two of our parishioners, Deacon Mark and lay assistant Jerome Friday have for many

years been actively involved in the Bridge Ministry taking on different direct service delivery roles, including management. The Parish has collected, stored and donated suits to the men that the Bridge serves through their employment program. With the recent dissolution of The Bridge, Deacon Mark is in the process of developing a new prison ministry.





---

## ***Our new Incumbent should...***

---

### **Have these gifts to share with us:**

- Preaching God's word, making it relatable to people of all ages and at different stages in their faith journey.
- Pastoring to build and grow our children, youth and adult education ministries.
- Compassion to minister to those in need and share in their sorrows and joys.



### **Possess these qualities:**

- Deep and abiding faith in God and a willingness to share God's love and word with people within and outside the church
- Strong calling to the priesthood and demonstrates this humbly in their interactions with others
- Strong leadership skills that facilitate the growth and development of lay leadership, build partnerships, collaborations and co-creation of activities and ministries within the parish, in our communities and across our deanery
- Shares the Eucharist in ways that remind us of Jesus' sacrificial love for us and to go forth and live out that mission in our communities
- Open to learning new ways of doing things and seeing God in different experiences.
- Understands their own humanity and is willing to show emotions
- A sense of humour and is able to laugh with others and at themselves
- A good communicator with the ability to understand an audience and adjust delivery as necessary.

### **Be willing to:**

- Champion, co-lead, and support the parish's re-development accessible project and related fundraising activities
- Open to integrating different styles of worship and music to build and strengthen the faith of parishioners
- Support our outreach activities to move beyond compassion of charity to compassion of justice, which requires getting involved in addressing the root cause of poverty and marginalization for the most vulnerable in Brampton, Peel and beyond.

## ***Human, Physical and Financial Resources***

### **Human Resources: Staff Positions**

#### **Paid positions**

Full-time Incumbent

Part-time Organist & Music Director

Part-time Parish Secretary

Part-time Youth Leader

#### **Key volunteer positions**

Lay Assistants Wardens Choir Treasurer Envelope Secretary

Pastoral Care Church School Adult Education Outreach Deacon

Hospitality Prayer Chain Altar Servers Greeters and Sidepersons

Altar Guild

Property

Messy Church (Food, Fun & Faith)

Prayer Shawl

Sharing the Joy

Visioning

Fundraising

Coffee Hour

Lay Delegates to Synod

Intercessors

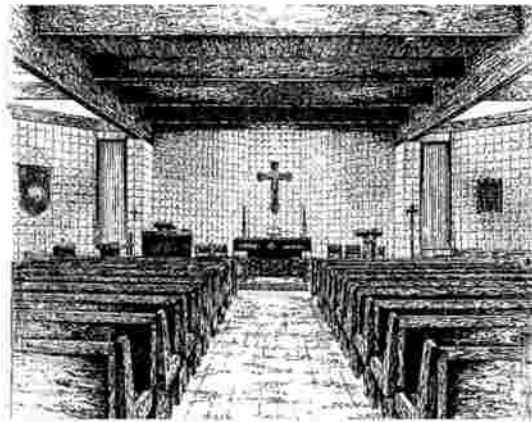
***Please see Appendix 1 for a breakdown of parish statistics.***

## Leadership Style

- Our leadership team is directed by the Incumbent in collaboration with the two Wardens, two Deputy Wardens and in consultation with the Treasurer. Monthly meetings are set to review all administrative, missional and corporate issues including finances, property, outreach and fundraising. The leadership team also consults regularly with the Advisory Board, group leaders and parishioners for input. We believe strongly in clear and transparent communication.

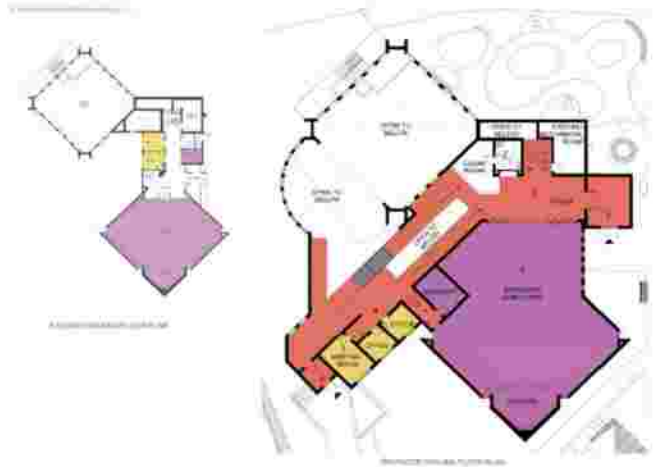
## Physical Resources

- Our main worship space was built in 1980 along with the narthex, two offices and sacristy. Part of our land was sold at the time to finance this addition. This main level also includes coat racks and an accessible washroom.
- The upper and lower parish halls were built in 1963 and are the original church building.



- Our Church School uses the upper parish hall.
- Rectory – After buying and selling two rectories, a motion was passed at Vestry that we would not again purchase a rectory. St. Joseph's covers housing allowance and utilities. Housing allowance is the only option for a new Incumbent.
  - Our plot of land is situated along the side of a greenbelt and beside the Etobicoke Creek. As part of our Transformation Project we want to further develop and landscape our good-sized property. A landscape architect has drawn up plans to help make our building more welcoming and draw in people from the neighbourhood. This would include an outdoor wedding site as well as children's play area.
  - We started about eight years ago to look at how the building and property fit in with our ministries and God's call to mission and our connection to the larger community around us. The original goal was to make the building fully accessible. At present there are steep but wide stairs to the upper and lower halls; only the main level is fully accessible.

However, this grew and developed naturally into our Transformation Project. We realized we wanted to make our church not just physically, but more spiritually accessible as we share God's love with those in our community who do not yet have a relationship with God. We began working with architects for advice on the best use of the premises. The design was well supported by the parish, but the next phase of the project, to get an exact cost estimate, would have needed a substantial investment. Preliminary estimates for this design came in at \$3 million as we became aware that construction costs were rising quickly.



As we explored financing options, the Diocese, while supportive of our project, did not commit to funding this project in any substantial way. During a parish meeting in June 2019 our parishioners realized that maintaining the status quo would not ensure St. Joseph's survival in the long term. As a

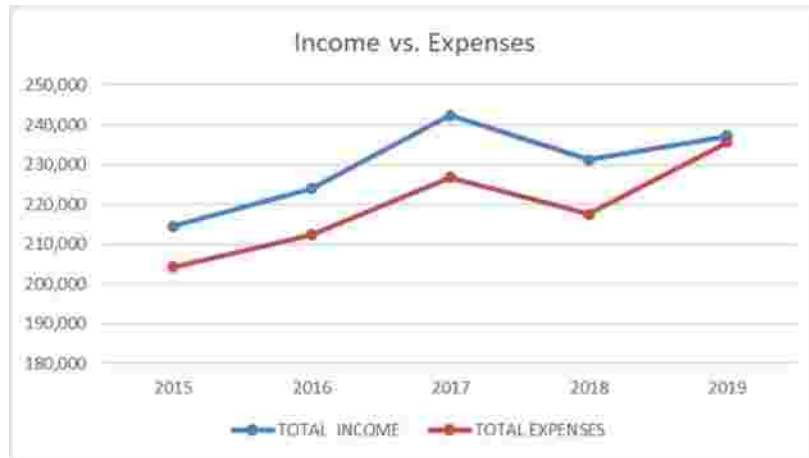
parish we agreed to 1. Explore fundraising through a professional fundraiser 2. Investigate whether developers have any interest in the whole site and 3. Develop a more affordable but still viable design. With the announcement in January 2020 of the retirement of our Incumbent these plans were put on hold.

There is a strong desire in our parish for moving forward with this project and the necessary fundraising to make it happen. We are looking for a new Incumbent with energy and enthusiasm who can lead this Project and help us to develop a more affordable but still viable option.

- Note that even if we decided not to go ahead with our Transformation Project, fundraising would still be required to maintain and upgrade the existing building. This would include replacement of the roof, re-paving the driveway and at some point the replacement of two end of life boilers in the older part of the building. However, the building would still not be accessible.

## Financial Resources

Our income and expenses have remained fairly stable over the past five years at over \$200,000; the 2019 budget was set at over \$237,000 and 2020 is under \$242,000.



85% of our income is from givings, while fundraising is 15% which has declined over the years. Our major expense has been related to personnel costs, accounting for 55%, followed by property at 21% and Diocesan allotment at 15%. Our commitment and focus on growing and developing our youth ministry resulted in us having a part-time paid Youth Leader position. This has helped to increase our personnel costs, but it has been worth the investment.

Another major expense between 2018 and 2019 was on our Transformation Project. To date we have spent almost \$40,000 on this Project to cover costs related to Architect, Landscape Architect, measuring and survey fees. We were fortunate to pay for \$32,000 of these costs from donations and out of our Operating Account. We have determined that continued financing of this project will involve Professional Fundraisers and/or a Stewardship Campaign.

Even though we have a considerable aging population who are on fixed income, our parish remains financially strong. Our Transformation Project is a priority goal and vision for us in following God's plan for the future of this parish.

The realities of Covid-19 have greatly affected the finances of our parish. However, due to good fiscal management and the Jubilee Fund from the Diocese, we have sufficient funds in the bank that we have been able to draw from during this difficult time. Our hope is that our new Incumbent will have the energy, drive and imagination to help us realize our vision and our call to God's mission in our community.

***Please see Appendix 2 for further breakdown of our income and expenses from 2019. Additional financial information for the past 5 years can be found in Appendix 3.***



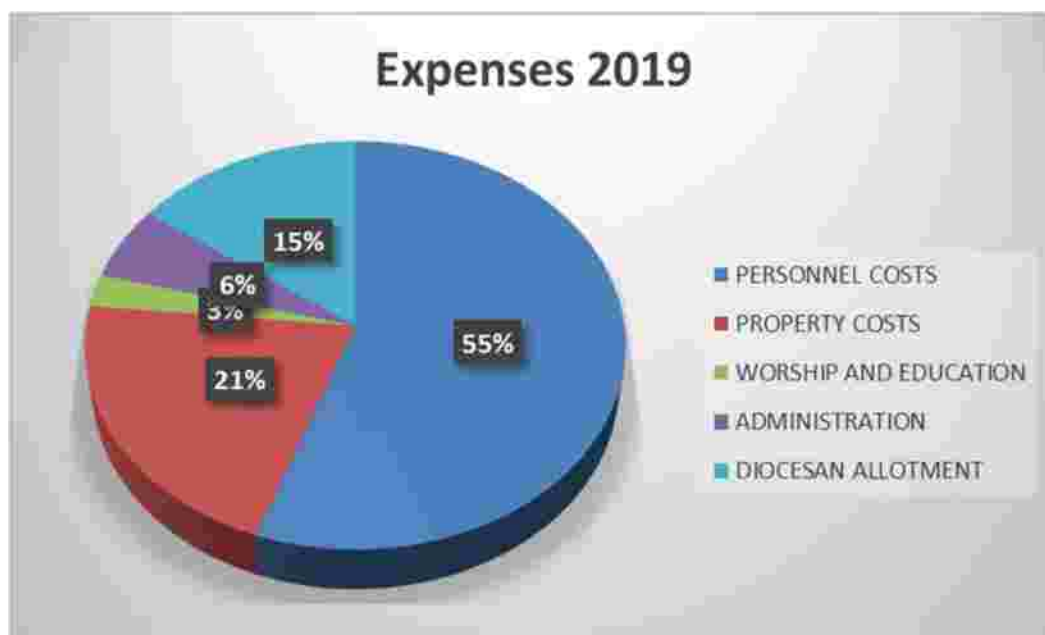
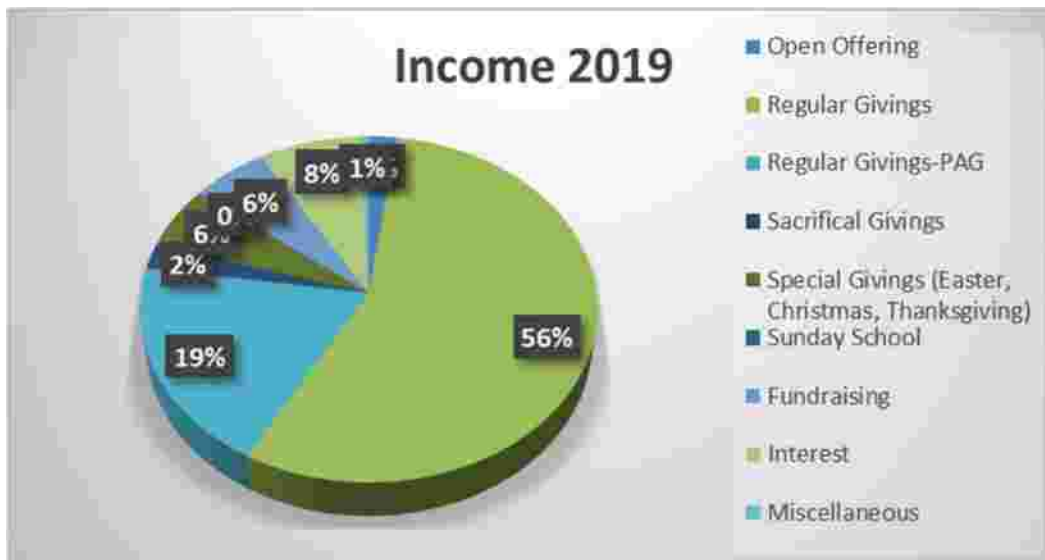
## APPENDICES

### Appendix 1

#### Breakdown of Parish Statistics

Parish Statistics	2015	2016	2017	2018	2019
Number on Parish list	401	403	407	401	363
Total identifiable givers	174	174	180	171	176
Average weekly attendance	187	182	196	195	185
Baptisms	9	2	13	7	3
Weddings	1	1	4	3	2
Funerals	10	7	8	13	9
<i>Age range of parishioners:</i>					
0 – 30 years	33	33	33	31	34
30 – 65 years	51	48	52	53	51
65+ years	60	62	66	65	60
Average Sunday attendance	144	143	151	149	145
# of new parishioners last 5 years					60

## Appendix 2



## Appendix 3

## Final Financial Reports 2015-2019

ST. JOSEPH OF NAZARETH ANGLICAN CHURCH FINANCIAL REPORTS 2015 - 2019						
INCOME	FINAL 2015	FINAL 2016	FINAL 2017	FINAL 2018	FINAL 2019	BUDGET 2020
Open Offering	\$4,318.68	\$4,751.20	\$6,201.53	\$8,172.79	\$5,151.40	\$6,585.87
Regular Givings	\$155,477.84	\$160,808.17	\$151,695.33	\$133,395.09	\$132,627.80	\$137,964.00
Regular Givings-PAG		\$2,165.75	\$24,011.50	\$30,816.00	\$45,641.00	\$45,000.00
Sacrificial Givings	\$7,855.00	\$7,014.00	\$6,142.00	\$6,220.00	\$5,470.00	\$6,000.00
Special Givings (Easter, Christmas, Thank	\$12,424.00	\$12,913.05	\$12,819.00	\$13,556.25	\$13,968.89	\$13,000.00
Sunday School	\$45.35	\$228.24	\$94.40	\$20.80	\$25.15	\$25.00
<b>Subtotal (1)</b>	<b>\$180,120.87</b>	<b>\$187,880.41</b>	<b>\$200,963.76</b>	<b>\$192,180.93</b>	<b>\$202,884.24</b>	<b>\$208,574.87</b>
Fundraising Net	\$15,079.77	\$16,437.81	\$19,101.26	\$16,682.93	\$12,922.50	\$14,000.00
Fundraising Receipts		\$211.00	\$1,198.57	\$942.50	\$1,103.87	\$0.00
Interest Income (Investments)	\$15,403.24	\$15,634.72	\$16,382.64	\$16,774.40	\$17,362.04	\$17,000.00
Interest GIC Operating	\$0.00	\$0.00	\$3.12	\$118.64	\$1,273.25	\$900.00
Miscellaneous	\$2,679.21	\$1,942.95	\$3,391.94	\$3,092.64	\$1,255.79	\$500.00
Space	\$1,200.00	\$1,940.00	\$160.00	\$1,448.00	\$400.00	\$1,000.00
Special Appeal for Repairs & outreach	\$0.00	\$0.00	\$1,130.00	\$0.00	\$0.00	\$0.00
<b>Sub Total Miscellaneous</b>	<b>\$34,362.22</b>	<b>\$36,166.48</b>	<b>\$41,367.53</b>	<b>\$39,059.11</b>	<b>\$34,317.45</b>	<b>\$33,400.00</b>
<b>TOTAL INCOME</b>	<b>\$214,483.09</b>	<b>\$224,046.89</b>	<b>\$242,331.29</b>	<b>\$231,240.04</b>	<b>\$237,201.69</b>	<b>\$241,974.87</b>
EXPENSES	FINAL 2015	FINAL 2016	FINAL 2017	FINAL 2018	FINAL 2019	BUDGET 2020
<i>Personnel:</i>						
Benefits & Pension	\$14,073.61	\$14,487.10	\$14,612.23	\$14,948.81	\$15,151.22	\$15,300.00
Housing Allowance	\$19,200.00	\$19,200.00	\$19,200.00	\$21,000.00	\$21,000.00	\$21,000.00
Housing-Utilities	\$4,372.55	\$4,111.44	\$4,397.43	\$3,829.26	\$3,734.44	\$4,100.00
Professional Develop - Rector	\$450.00	\$450.00	\$450.00			
Rector's Stipend	\$39,983.04	\$41,055.04	\$42,384.00	\$43,877.04	\$45,465.00	\$45,694.00
Supply Priest	\$1,672.55	\$1,702.08	\$1,680.00	\$0.00	\$1,277.16	\$2,169.00
<b>TOTAL CLERGY COSTS</b>	<b>\$79,751.75</b>	<b>\$81,005.66</b>	<b>\$82,723.66</b>	<b>\$83,655.11</b>	<b>\$86,627.82</b>	<b>\$88,263.00</b>
Contingency	\$100.00	\$200.00	\$300.00	\$200.00	\$300.00	\$300.00
CPP EI	\$1,126.68	\$1,071.93	\$999.52	\$1,050.72	\$1,422.61	\$1,697.00
Musicians	\$630.00	\$370.00	\$380.00	\$805.00	\$725.00	\$900.00
Organist	\$16,446.32	\$17,218.31	\$17,791.65	\$18,422.50	\$19,105.00	\$19,468.00
Secretary	\$15,990.00	\$16,200.00	\$16,507.00	\$16,827.00	\$17,198.04	\$17,650.00
Supply Organist	\$1,120.00	\$900.00	\$1,060.00	\$1,200.00	\$1,240.00	\$1,250.00
Youth Leader				\$0.00	\$4,157.89	\$10,400.00
<b>TOTAL SERVICE COSTS</b>	<b>\$35,413.00</b>	<b>\$35,960.24</b>	<b>\$37,038.17</b>	<b>\$38,505.22</b>	<b>\$44,148.54</b>	<b>\$51,665.00</b>
<b>TOTAL PERSONNEL COSTS</b>	<b>\$115,164.75</b>	<b>\$116,965.90</b>	<b>\$119,761.83</b>	<b>\$122,160.33</b>	<b>\$130,776.36</b>	<b>\$139,928.00</b>
<b>CHURCH</b>						
Insurance	\$6,584.33	\$6,584.33	\$6,271.27	\$6,332.39	\$6,519.24	\$7,676.87
Church Renovations	\$0.00	\$0.00	\$9,800.00			
Janitorial	\$9,380.00	\$9,100.00	\$9,545.00	\$9,167.46	\$8,960.00	\$10,710.00
Landscaping	\$6,877.70	\$6,241.06	\$8,485.69	\$8,975.00	\$9,747.50	\$11,000.00
Maintenance Church	\$8,350.81	\$11,993.48	\$7,293.87	\$4,658.77	\$12,214.20	\$10,000.00
Utilities	\$13,073.20	\$12,906.86	\$12,621.45	\$12,652.05	\$12,338.20	\$13,000.00
Maintenance/Utilities-Recoveries	-\$300.00	-\$485.00	-\$60.00	-\$362.00	-\$100.00	\$0.00
Special Appeal Maintenance Repair	\$0.00	\$0.00	\$0.00			
<b>TOTAL PROPERTY COSTS</b>	<b>\$43,966.04</b>	<b>\$46,340.73</b>	<b>\$53,957.28</b>	<b>\$41,423.67</b>	<b>\$49,679.14</b>	<b>\$52,386.87</b>

## Final Financial Reports 2015-2019 cont'd

FINANCIAL REPORTS 2015 - 2019						
EXPENSES Cont'd	FINAL 2015	FINAL 2016	FINAL 2017	FINAL 2018	YTD 2019	BUDGET 2020
<b>WORSHIP AND EDUCATION</b>						
Advertising	\$588.00	\$305.42	\$624.55	\$510.00	\$0.00	\$0.00
Advertising -website	\$0.00	\$760.00	\$347.00	\$80.00	\$357.00	\$400.00
Altar Supplies	\$1,486.49	\$939.20	\$1,302.22	\$1,322.98	\$780.69	\$1,400.00
Altar Flowers	\$0.00	\$0.00	\$0.00	\$0.00	\$0.00	\$300.00
Christian-Adult Ministry	\$195.06	\$0.00	\$0.00	\$125.64	\$265.37	\$300.00
Christian Childrens Ministry		\$1,214.25	\$1,226.12	\$141.96	\$125.09	\$500.00
Church Functions	\$297.58	-\$74.45	-\$288.08	\$1,516.76	-\$201.91	\$1,500.00
Church Supplies	\$1,059.96	\$841.26	\$572.35	\$848.50	\$688.20	\$900.00
Deacon	\$357.05	\$146.94	\$424.45	\$433.61	\$617.31	\$200.00
Deacon Education	\$80.00					
Discretionary Fund	\$800.00	\$800.00	\$800.00	\$800.00	\$800.00	\$800.00
Grant for Youth	\$0.00	\$0.00	\$243.27	\$58.18	\$0.00	\$0.00
Honorarium	\$150.00	\$100.00	\$100.00	\$250.00	\$0.00	\$300.00
Messy Church-Family FFFF	\$221.40	\$125.34	\$83.07	\$217.29	\$155.05	\$200.00
Music Maintenance	\$125.00	\$135.00	\$245.00	\$265.00	\$497.50	\$500.00
Music Supplies	\$62.20	\$92.80	\$0.00	\$355.00	\$32.85	\$300.00
Parish Outreach		\$0.00	\$500.00	\$700.00	\$500.00	\$1,000.00
Pastoral Care	\$25.95	\$324.53	\$203.25	\$284.62	\$175.42	\$300.00
Servers	\$30.53					
Synod Expenses	\$336.00	\$0.00	\$624.00	\$556.00	\$780.00	\$0.00
Wednesday Morning Group	\$197.91					
Youth	\$0.00	\$0.00	\$385.18	\$600.43	\$436.06	\$500.00
<b>TOTAL WORSHIP AND EDUCATION</b>	<b>\$6,013.13</b>	<b>\$5,710.29</b>	<b>\$7,392.38</b>	<b>\$9,065.97</b>	<b>\$6,008.63</b>	<b>\$9,400.00</b>
<b>ADMINISTRATION</b>						
GST				\$13.81	\$79.58	\$0.00
HST	\$7,283.90	\$6,738.51	\$5,727.82	\$6,873.48	\$6,839.07	\$0.00
HST Recovery	-\$5,076.32	-\$2,580.68	-\$3,991.88	-\$4,792.80	-\$4,747.59	\$0.00
Office Supplies	\$4,446.42	\$4,861.72	\$4,955.12	\$4,704.38	\$6,631.39	\$5,000.00
Service Charge	\$545.75	\$72.00	\$228.19	\$223.24	\$243.96	\$100.00
PAG Service charge		\$12.58	\$151.43	\$134.50	\$189.75	\$200.00
Accounting Services	\$2,600.00	\$0.00	\$2,300.00	\$2,300.00	\$2,900.00	\$2,500.00
Travel-Rector	\$1,722.53	\$2,174.17	\$1,930.23	\$1,957.02	\$1,586.27	\$2,000.00
<b>TOTAL ADMINISTRATION</b>	<b>\$11,522.28</b>	<b>\$11,278.30</b>	<b>\$11,300.91</b>	<b>\$11,413.63</b>	<b>\$13,722.43</b>	<b>\$9,800.00</b>
<b>DIOCESAN ALLOTMENT</b>	<b>\$30,132.84</b>	<b>\$32,040.84</b>	<b>\$34,324.80</b>	<b>\$33,490.20</b>	<b>\$35,478.00</b>	<b>\$30,460.00</b>
<b>DIOCESAN ALLOTMENT 2014</b>	<b>-\$2,527.29</b>					
<b>TOTAL GENERAL EXPENSES</b>	<b>\$45,140.96</b>	<b>\$49,029.43</b>	<b>\$53,018.09</b>	<b>\$53,970.30</b>	<b>\$55,209.06</b>	<b>\$49,660.00</b>
<b>CAPTIAL EXPENSE</b>						
<b>Church Renovations</b>	<b>\$0.00</b>	<b>\$0.00</b>	<b>\$0.00</b>	<b>\$0.00</b>	<b>\$0.00</b>	<b>\$0.00</b>
<b>TOTAL EXPENSES</b>	<b>\$204,271.75</b>	<b>\$212,336.06</b>	<b>\$226,737.20</b>	<b>\$217,554.30</b>	<b>\$235,664.56</b>	<b>\$241,974.87</b>
<b>NET OPERATING INCOME</b>	<b>\$10,211.34</b>	<b>\$11,710.83</b>	<b>\$15,594.09</b>	<b>\$13,685.74</b>	<b>\$1,537.13</b>	<b>\$0.00</b>

## Final Financial Report 2015-2019 cont'd

FINANCIAL REPORTS 2015 - 2019						
RESTRICTED INCOME	FINAL 2015	FINAL 2016	FINAL 2017	FINAL 2018	FINAL 2019	BUDGET 2020
Faith Works	\$4,271.87	\$4,001.05	\$3,456.63	\$3,101.75	\$2,585.00	\$3,000.00
Faith Works PAG		\$0.00	\$875.00			
Outreach	\$2,468.21	\$1,501.47	\$5,448.25	\$0.00	\$2,459.05	\$0.00
Designated Givings	\$5,280.00	\$6,150.00	\$1,350.00	\$0.00	\$500.00	\$0.00
Church Transformation				\$16,585.83	\$4,022.00	\$0.00
Memorials Flowers	\$3,355.00	\$3,390.60	\$3,845.25	\$2,610.00	\$3,260.50	\$0.00
Memorials Other	\$1,801.00	\$1,955.00	\$505.00	\$2,823.70	\$2,423.25	\$0.00
Special Appeal- maintenance repair	\$17,130.00					
Designated Other		\$0.00	\$1,605.49			
Designated Other Sharing the Joy		\$0.00	\$0.00	\$170.00	\$0.00	\$0.00
GIC Interest		\$55.00	\$303.92	\$210.47	\$1,274.51	\$1,300.00
<b>SUB-TOTAL</b>	<b>\$34,306.08</b>	<b>\$17,053.12</b>	<b>\$17,389.54</b>	<b>\$25,501.75</b>	<b>\$16,524.31</b>	<b>\$4,300.00</b>
Grant - Youth worker	\$32,800.00					
Grant - Worship Altar	\$20,000.00					
Our Faith Our Hope	\$9,228.00	\$6,580.00	\$1,524.00	\$1,674.00	\$30.00	\$0.00
Curacy Grant	\$0.00	\$0.00	\$50,000.00	\$40,643.04	\$32,184.06	\$0.00
Grand Youth Leader 2018	\$0.00	\$0.00	\$3,288.00	\$6,700.00	\$0.00	\$0.00
Grant-Enriched Minds	\$2,000.00	\$0.00	\$0.00	\$0.00	\$400.00	\$0.00
Grant-Music	\$0.00	\$0.00	\$0.00	\$0.00	\$1,000.00	\$0.00
Grant Gacot	\$0.00	\$0.00	\$0.00	\$0.00	\$1,000.00	\$0.00
<b>TOTAL RESTRICTED INCOME</b>	<b>\$98,334.08</b>	<b>\$23,633.12</b>	<b>\$72,201.54</b>	<b>\$74,518.79</b>	<b>\$51,138.37</b>	<b>\$4,300.00</b>
<b>RESTRICTED EXPENSES</b>						
Faith Works	\$4,113.42	\$4,038.89	\$4,095.63	\$2,636.48	\$2,197.25	\$3,000.00
Parish Outreach	\$2,468.21	\$1,524.33	\$5,160.14	\$0.00	\$2,550.00	\$0.00
Designated	\$8,264.08	\$2,426.74	\$175.49	\$0.00	\$595.58	\$0.00
Church Transformation				\$18,293.46	\$6,860.59	\$0.00
Memorials- Flowers	\$3,561.97	\$3,217.61	\$3,247.31	\$2,769.76	\$2,316.84	\$0.00
Memorials- Other	\$0.00	\$30.00	\$0.00	\$571.36	\$3,185.65	\$0.00
Special Appeal- maintenance repairs	\$3,480.00	\$10,187.64	\$3,175.00	\$287.36	\$0.00	\$0.00
Bank Charges	\$0.00	\$0.00	\$68.82	\$59.45	\$36.88	\$48.00
<b>SUB-TOTAL</b>	<b>\$21,887.68</b>	<b>\$21,425.21</b>	<b>\$15,922.39</b>	<b>\$24,617.87</b>	<b>\$17,742.79</b>	<b>\$3,048.00</b>
GrantYouth Worker	\$0.00	\$0.00	\$0.00	\$29,938.05	\$2,861.95	\$0.00
Grant Youth Leader 2019	\$0.00	\$0.00		\$0.00	\$6,700.00	\$0.00
Grant Curacy	\$0.00	\$0.00		\$47,713.64	\$32,184.02	\$0.00
Grant - Worship Altar	\$0.00	\$13,978.00	\$6,021.10			
Grant - Enrich Childrens Minds	\$2,480.00	\$2,100.00	-\$2,036.62			
Grant - Curacy Benefits	\$0.00	\$0.00	\$21,140.75			
Grant - Curacy Stipend	\$0.00	\$0.00	\$21,722.65			
Grant-Youth	\$0.00	\$0.00	\$3,288.00	\$64.87	\$0.00	\$0.00
Our Faith Our Hope	\$0.00	\$0.00	\$0.00	\$0.00	\$500.00	\$500.00
Our Faith Our Hope - Outreach	\$785.00	\$0.00	\$4,000.00			
Restricted HST	\$0.00	\$2,942.36	\$2,093.20	\$2,920.69	\$1,407.67	\$0.00
Restricted HST -Recovery	\$0.00	\$0.00	-\$1,458.76	-\$2,042.38	-\$967.09	\$0.00
<b>TOTAL RESTRICTED EXPENSES</b>	<b>\$25,152.68</b>	<b>\$40,445.57</b>	<b>\$70,692.71</b>	<b>\$103,212.74</b>	<b>\$60,429.34</b>	<b>\$3,548.00</b>
<b>NET RESTRICTED INCOME</b>	<b>\$73,181.40</b>	<b>-\$16,812.45</b>	<b>\$1,508.83</b>	<b>-\$28,693.65</b>	<b>-\$9,290.97</b>	<b>\$752.00</b>



### Balance Sheet 2019

<b>ST. JOSEPH OF NAZARETH ANGLICAN CHURCH</b>		
<b>BALANCE SHEET</b>		
<b>AS OF DECEMBER 31, 2019</b>		
CIBC -Operating	\$24,998.45	
Certificated of Deposit Operating Account	\$30,255.00	
Certificated of Deposit Operating Account	\$17,280.00	
CIBC Restricted Account	\$9,253.29	
Certificated of Deposit Restricted Account	\$51,176.36	
SUB TOTAL	<b>\$132,963.10</b>	
Investment Held by Diocese	\$395,628.62	
Accounts Receivable	\$3,781.65	
Interfund	\$545.79	
<b>FIXED ASSETS</b>		
<b>CHURCH</b>	<b>\$471,705.00</b>	
<b>TOTAL</b>	<b>\$1,004,624.16</b>	
Accounts Payable and Accruals		\$312.50
Interfund		\$545.79
Capital		\$471,705.00
Restricted Funds held in Diocese		\$324,228.24
Unrealized Investment		\$71,400.38
Retained Earnings		\$395,628.62
Restricted Income -Other		\$69,366.53
Restricted Income for 2019		-\$9,290.97
Retained earning regular		\$74,819.93
Net income/loss year to date/other		\$1,536.76
<b>TOTAL</b>		<b>\$1,004,078.37</b>

<b>RESTRICTED ACCOUNT BALANCE</b>	
<b>DEC. 31, 2019</b>	
Altar Guild	\$516.73
Youth Group	\$0.00
Dance Squad	\$121.81
Screen for Altar	\$500.00
Sharing the Joy	\$0.00
<b>Sundry Items Sub-total</b>	<b>\$1,138.54</b>
Miscellaneous	\$12,677.74
Bank Charges	-\$361.90
<b>TOTAL</b>	<b>\$13,454.38</b>
Our Faith Our Hope- Capital	\$23,272.85
Our Faith Our Hope- Building the Future	\$11,319.76
Our Faith Our Hope -Outreach	\$1,640.47
Our Faith Our Hope- Emergency	\$3,108.49
<b>Our Faith Our Hope Total</b>	<b>\$39,341.57</b>
Grant Enriched Minds #2	\$700.08
Enriched Minds Donations	\$400.00
Grant-Youth Worker 2015	\$0.00
Grant Youth Leader 2018	\$0.00
Grant Gacot	\$1,000.00
Grant Music 2019	\$1,000.00
Curancy Grant	\$0.00
Church Transformation	-\$4,546.22
Faith Works	\$1,230.68
Parish Outreach	\$174.30
Memorial -Flowers	\$2,718.48
Memorial Other	\$4,720.94
GIC Interest Captial	\$1,843.90
Restricted HST	-\$2,066.67
Sub Total	\$7,175.49
<b>TOTAL RESTRICTED</b>	<b>\$59,971.44</b>
<b>BANK BALANCE</b>	
CIBC Restricted	\$9,253.29
Cerfiicate of Deposit	\$51,176.36
<b>TOTAL RESTRICTED</b>	<b>\$59,425.65</b>
<b>Owing to RESTRICTED</b>	<b>-\$545.79</b>

# ST. JOSEPH OF NAZARETH PARISH LIFE

