

St. Cyprian's Anglican Church



**Parish Profile
2022**

TABLE OF CONTENTS



INTRODUCTION.....	2
OUR CONGREGATION	3
WORSHIP, LITURGY, AND MUSIC	4
CURRENT MINISTRIES	6
OUR NEIGHBOURHOOD	9
OUR BUILDING	11
FINANCIAL SUMMARY	12
OUR FUTURE.....	14
OUR NEW INCUMBENT	15
APPENDIX	17
Church Building Details	17
Church Building Floor Plan	18
Town Hall Survey Data	19

INTRODUCTION



St. Cyprian's Anglican Church is part of a Tri-Congregational Church located in the diverse community near Leslie Street and Finch Avenue East in North York. We are a pastoral-size parish (our Sunday attendance is between 50-125) as designated by the Diocese. It is a unique parish in the Diocese of Toronto. We are the only Tri-Congregational Church worshipping co-operatively under one roof. Presently our partners are Iona Presbyterian and St Christopher's Anglican Church (Cantonese-speaking). Each congregation worships independently, sharing responsibilities, working jointly on outreach projects and on occasion worshipping together as a Christian community. Trinity Mandarin Presbyterian Church, although not a partner, is fully engaged with us in ecumenical events and outreach activities. As independent churches who do work together for the greater good, our multi-denominational and multi-lingual capabilities help us to bring the Good News of the Gospel to the wider community.

Many of our parishioners travel quite a distance on Sunday to attend services; a strong testament of their dedication to St. Cyprian's and the messages of faith this parish conveys.

Our mission statement speaks to our true dedication to the enrichment of our parish and community:

"We, the people of St. Cyprian's Anglican Church, called by God and committed to Jesus Christ in the power of the Holy Spirit, seek to live and make known, in word and action, the good news of God's love in the world. Using these gifts, we worship, proclaim, learn, serve, reach out, welcome others, and develop a caring and sharing community of believers."

We live out this mission by the willingness of parishioners who reach out and share their gifts with others. Over the years we have developed a caring community at St. Cyprian's where people support each other in various initiatives which are highlighted throughout the profile.

We have experienced God's unceasing love, guiding us through stormy seas, and creating in us a willingness to learn new things, to adapt to the changing times always trusting in Him.

As you review our Parish Profile you will discover our strong dedication to God. This is reflected in our ministry which contributes to our community and the growing of faith.

OUR CONGREGATION

Our multi-cultural parish is rich with members of Caribbean, European, Asian, Middle Eastern and South Asian heritage. This provides us with unique opportunities to appreciate, understand and grow with our brothers and sisters in Christ believing that “all are welcome in this place.”

Our origins were built on a concept that upholds and uplifts our Anglican traditions, while respecting and appreciating those of others, and thereby enriching us as a faith community.



St. Cyprian's is a welcoming, family-friendly, and inter-generational parish. People develop a strong sense of belonging to our church family. We may be a parish small in number, but we are huge in our support of each other in both difficult and good times.

For many years our Caribbean community has enriched our church life through sharing their culture with stories, music, food, and their love of people. We traditionally celebrate Black History Month with a Sunday Service that includes a guest speaker from the wider Black Community or a parishioner, presentations by our Church School, and Spiritual music followed by a luncheon. Moving forward, each Sunday in February, we now include a brief history about individuals from the Black community who have enriched Canada throughout our history in a variety of ways.



The many parishioners who travel very long distances by car or transit to Sunday services and other events testifies to their commitment to this family-oriented, connected church.

Our humble beginnings continue to be reflected in who we are today. St. Cyprian's, initially known as the Anglican Church at Finch and Leslie, began in a portable in 1965. In the summer of 1969, we, along with Hillcrest United Church and Iona Presbyterian Church, moved into our current home. Until recently, each congregation rotated yearly through the three worship spaces, thus the need for moveable furnishings and interiors that were welcoming to all denominations.

We gather in simple surroundings with our focus not on the ornate but on our worship, our faith, our fellow parishioners and our community. Our building and worship spaces may not be traditional but here you will appreciate that the building is a structure and the people inside are the Church.

"We are the Church."

"Welcome to St. Cyprian's."

WORSHIP, LITURGY, AND MUSIC

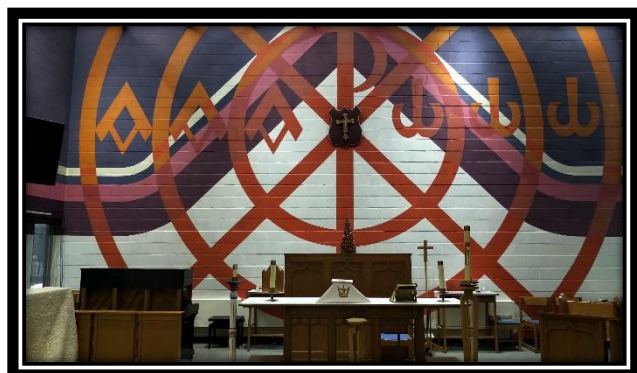
Hebrew 10:25

"Let us not give up meeting together, as some are in the habit of doing, but encouraging one another—and all the more as you see the Day approaching."

Our Worship throughout COVID has brought us closer together. Through Zoom Sunday Services we have bonded and increased communication. Our services have been especially enlightening during these tough times, and we all realize how integral a part of our lives God is and how important it is that we keep our faith strong.

Prior to COVID, we offered two services on Sunday:

9:30 a.m. weekly	Holy Communion Service
11:00 a.m. on 1 st , 3 rd and 5 th Sunday of the month	Choral Eucharist
11:00 a.m. on 2 nd and 4 th Sunday of the month	Morning Prayer
9:30 and 11:00 a.m. on 3 rd Sunday of the month	Healing Service



During the 11:00 a.m. service a Tri-Congregational Church School is held, and the children join the services for presentations when appropriate and then join their own churches prior to the end of services.

Two television screens carry the bulk of our service during in-person worship. This makes it easier for some parishioners and for visitors unfamiliar with the Anglican liturgy to follow the service, while also cutting down on paper and protecting the environment.

During COVID, our church moved to a combined 10 a.m. service via Zoom. Meeting virtually has kept us connected, uniting parishioners from both of our services weekly. It has been instrumental in our support of our Iona family following the unexpected, sudden death from COVID-19 of their minister.



On Sunday mornings during our 11:00 a.m. service we have a small dedicated choir who sing throughout the service. Our Choir leader is very talented, proficient with both organ and piano. It is important to note that our choir would like to attract new members with a range of voices.



Each week our choir inspires us with their gift of music. During COVID lockdown, the Choir recorded pieces played during Zoom worship. Music is very important to our Parish. Music strengthens our prayers and enriches our worship. God speaks to us through the words and melodies providing comfort and hope in our lives.

CURRENT MINISTRIES

Ministries at St. Cyprian's are highlighted throughout the profile, reflecting how we aspire to share God's love and teachings with others as we grow together in faith.

Teaching and Nurturing

- Weekly evening study group
 - Specific Old or New Testament Books
 - Presentations by participants about Bible stories such as "Women in the Bible"
- Afternoon 6-week Lenten study usually led by Tri-Congregational clergy

Church School

- The Church School is a joint venture with Iona Presbyterian Church
 - Lectionary based curriculum used by both churches
- Church School attendance ranges between 8 - 10 children
- Meaningful participation in special services
 - For the Black History service, on one occasion, the children read the Martin Luther King speech, "I Have A Dream", in its entirety
 - Musical presentations by the Church School as an independent choral group, instrumentally and with the Church Choir
- Nurturing young people in faith and preparing them to be crucifers and readers



Caring Ministry

- Pastoral Care
 - individual personal visitation by incumbent
 - monthly team visitation by clergy and lay members to Long Term Care facilities and nursing homes
- Prayer Chain
 - requests for prayer are confidentially shared with members of several teams
- Parish Nurse
 - Supported and funded by the Tri-Congregational Church
 - Provides personal support
 - Hosted seminars and clinics pertaining to wellness (blood pressure, diabetes, dementia and etc.)
 - Introduced weekly seniors' fitness classes open to all and now attended by the larger community in conjunction with the Chiropractic College and their students
 - Distributed literature promoting a healthy lifestyle
 - Provides online health tips during COVID-19



Lockdown Birthday Celebration

- Community Care
 - Christmas hampers and “angel” gifts
 - Food pantry
 - Garage sale
 - NeighbourLink



Garage Sale

Fellowship and Mutual Support

- Fellowship after Sunday 11 a.m. service
- Wednesday afternoon social club
- Bus trips
- Springfest luncheon
- Shrove Tuesday Pancake Supper (2021 virtual with prizes)
- 50th anniversary cruise / luncheon



↑ Pancake Supper

← 50th Anniversary Luncheon

↓ 50th Anniversary Cruise



OUR NEIGHBOURHOOD

Outreach

Our community is typical of most in Toronto where a portion of the population faces food insecurity, homelessness, domestic violence, sickness, drug dependency, unemployment, and isolation. We are currently adjacent to two Toronto Community Housing projects, though we recognize that these issues are not exclusive to low-income communities.

We respond to:

- Food insecurity through our food cupboard
- Emergency financial need through the Benevolent Fund
- Social isolation through distribution of Christmas hampers, “angel” gifts, “ditty bags” (personal care items), and assisting seniors with transportation to medical appointments and shopping (in partnership with NeighbourLink).

Our parish financially supports the ministries of:

- Faithworks
- Mission to Seafarers
- Flemingdon Park Ministry



Christmas Hampers



Receiving Community Builder Award



Mission to Seafarers

Sharing Our Faith

We project our presence in the community through a brightly lit, Tri-Congregational sign board located on the property at the corner of Finch Avenue and Ravel Road.

Opportunities in which we have shared our faith and love of God and his Son:

- “Ashes to Go” at the bus stops at Finch & Leslie
- An annual June Tri-Congregational service
- Our eagerly anticipated and well-attended annual garage sale
- Flyers handed out at the garage sale
- Welcome and information bulletin shared with newcomers
- ALPHA

Social Justice

As part of the February 2021 Vestry, we incorporated a Statement of Territorial Land Acknowledgement on a monthly basis into our worship.

Every February we celebrate Black History month with a service dedicated to honouring the contributions Black women and men have made to society, while acknowledging that racism still exists.

We are also committed to honouring the contributions and history of Chinese and Indigenous partners in May and June respectively.

As a parish we have signed petitions to show our support for causes which we know will benefit society (Save Eye Care (2021); Increase Minimum Wage).

OUR BUILDING

Ravel Board

Ravel is the management board of the Tri-Congregational Church. Ravel's mandate is to ensure upkeep of the building and grounds. The board is comprised of equal numbers of lay people from each congregation as well as their clergy. Monthly meetings are held to keep on top of facility concerns. Issues are raised and investigated; quotes are obtained and work is completed. Expenses are shared equally by each congregation.

Outdoor Space

The spacious lawn is the perfect place for outdoor services. Recently we gathered outdoors for drive-by events to mark Canada Day and for retirement celebrations for our incumbent. The lawn is also used during our annual garage sale in September.

There is a small onsite parking lot shared by all.

North of the parking lot there are several vegetable gardens plots, with available water access.

A picnic table under a large shade tree benefits the community, especially the restaurant workers in the neighbourhood.

Local Facilities

The church is well situated in terms of amenities (i.e., North York General Hospital, Seneca College, Fairview Library, Fairview Mall). We also enjoy convenient access to highways 404 and 401, and both the Sheppard and Yonge subway lines. The east and west bound Finch bus stops are directly in front of our church.



Community Demographics

Census statistics indicate that St. Cyprian's is located in a culturally diverse community. Many families moving into the area in recent years are Asian. The addition of St. Christopher's Anglican Church (Cantonese-speaking) and the use of space by Trinity Presbyterian Church (Mandarin-speaking) are helping to address the needs of these communities.

For more details on the community, see the census data from City of Toronto ([cpa48.pdf \(toronto.ca\)](http://cpa48.pdf.toronto.ca))

FINANCIAL SUMMARY

Thanks to the faithful financial support from our parishioners, St. Cyprian's has no mortgage, liabilities or debts. Our income is mainly derived from the contribution of parishioners as well as the investment from the sale of the rectory invested with the Diocese.

We are a pastoral-size parish regularly supported financially through envelopes or PAR contributions.

Our operating budget in 2021 for expenses was just under \$145,000. Slightly less than 15% of our income comes from investment funds with the Diocese. Most of the funds for our many improvements, repairs and upgrades have come from generous bequests and through fundraising. We pay a monthly fee to the Ravel Board for building maintenance. The income from space rental from Northwood, Trinity Mandarin Presbyterian Church, as well as various community groups, is paid to Ravel helping to reduce the building operating costs.

We have one full-time incumbent, a musical director and an office administrator under contract.

Recent financial statements of St. Cyprian's Anglican Church

St. CYPRIAN'S ANGLICAN CHURCH						
RECEIPTS & DISBURSEMENTS - OPERATING FUND						
FOR PERIOD ENDED: 31-Dec-2021						
	MONTH			YEAR TO DATE		
RECEIPTS	Actual	Budget	Var Fr Budget	Actual	Budget	Var Fr Budget
Envelopes	8,550	12,000	-3,450	92,214	100,000	-7,786
Open	0	67	-67	52	800	-748
Investment Income	4,836	4,889	-54	19,342	19,558	-215
Fund Raising	0	0	0	6,395	500	5,895
Miscellaneous	3,925	750	3,175	22,462	9,000	13,462
Grant Income		0	0		0	0
Gift in Kind - Donation	0	0	0	802	0	802
Faithworks	1,540	702	838	7,680	5,850	1,830
Total Receipts	18,851	18,408	442	148,948	135,708	13,240
DISBURSEMENTS						
Incumbent						
Stipend	4,233	3,220	-1,014	53,540	49,671	-3,869
Housing allowance	2,200	1,346	-854	16,233	19,418	3,185
York Rectors' Fund	-567	-567	0	-6,800	-6,800	0
Employee Benefits	170	1,671	1,501	13,964	20,054	6,090
Professional Development	225	75	-150	825	900	75
Travel	0	200	200	849	1,200	351
Diocese of Toronto						
Assessment	1,173	1,174	0	14,082	14,082	0
Ravel Church Properties						
Share of building costs	1,825	1,825	0	21,900	21,900	0
Church Office Expenses						
Secretarial Help	451	451	0	4,510	4,510	0
Stationery & Postage	163	216	53	688	1,750	1,062
Miscellaneous Expenses	383	146	-237	875	2,594	1,719
Gift in Kind - Expenses	0	0	0	802	0	-802
Worship Expenses						
Worship Supplies	0	50	50	0	200	200
Organist	663	644	-19	7,295	7,295	0
Annual Audit	0	0	0	3,390	3,390	0
HST Rebate	-1,994	0	1,994	-3,835	-3,000	835
Outreach	6,506	3,550	-2,956	8,180	5,850	-2,330
Total Disbursements	15,432	14,001	-1,431	136,499	143,014	6,515
SURPLUS / (DEFICIT)	3,418	4,407	-989	12,449	-7,307	19,755

OUR FUTURE

Jeremiah 3:15

“And I will give you pastors according to mine heart, which shall feed you with knowledge and understanding.”

With the power of the Holy Spirit and God’s love and grace our goals are:

- To work with an incumbent to develop a clear vision as to how we as a parish can move forward, helping us to adapt and grow in changing times.
- To develop new faith-based initiatives and reintroduce ALPHA to the wider community
- To foster and strengthen our multi-denominational Tri-Congregational family.
- To develop and renew partnerships with organizations in order to bring the Good News of Christ into the community through our words and actions.
- To explore and expand opportunities for families, children, young people (reading club, Seneca College) to engage in activities and worship at St. Cyprian’s thereby encouraging and supporting congregational growth as 66% of the congregation is over the age of 65.
- To attract new members to our choir. It is important to note our dedicated choir has very limited numbers, presently without male voices.
- To revitalize community interest in the underused garden plots. With food prices at record highs, coupled with a lack of access to fresh produce, we should seek out eager gardeners from the neighbourhood.
- To support the future growth of the parish by nurturing existing leaders, and developing the next generation of new leaders.
- To train and support a Pastoral care team.
- To investigate parish grants through the Diocese to improve our facility.
- To transform music and liturgy to attract and bring in more young people.

St. Cyprian’s parishioners are rooted in a living faith in Jesus Christ. Our goal is to develop love and commitment to Jesus throughout our neighborhood.

We look forward to new beginnings and a bright future.

OUR NEW INCUMBENT

Isiah 40:11

“He tends his flock like a shepherd: He gathers the lambs in his arms and carries them close to his heart; he gently leads those that have young.”

St. Cyprian's, a dedicated, caring and mature congregation, looks forward to a new incumbent who shares our love of Christ and the Anglican liturgy, and who is willing to bring new insights and depths as well as challenge us as we grow as individuals and as a faith community.

Incorporating the input from the parishioners at our town hall meeting and survey the following are our aspirations for the future incumbent:

- Preach sermons that make scripture relevant to our daily lives, while providing historical context.
- Demonstrate a willingness to learn, experiment and expand technology to enhance and enrich communication.
 - Preferably able to conduct services through live conference calls.
- Embrace and enrich our Ecumenical partnership.
- Encourage and support us in our faith journeys as we live our daily Christian lives and become better stewards of God's Creation.
- Respect individuals and their diversity.
- Be approachable, open minded, have a sense of humour, and be supportive in peoples' lives especially when personal matters bring crisis and grief.
- Good communication and listening skills.
- Appreciate and respect that we are all at different stages in our understanding, faith journeys and Christian life.
- Bring pastoral care to all and work with our team in visiting those in LTC and nursing homes.
- Introduce and incorporate some new contemporary music along with traditional music into our worship, while working collaboratively with our choir director.
- A long-term commitment (7-10 years), is desired as we work towards achieving our goals.

We look forward to welcoming a new incumbent who understands and respects our beginnings and our uniqueness as devout Anglicans in this enriched, ecumenical, Tri-Congregational Church. It is important to work collegially with the other clergy in this setting and with us to enrich our spiritual growth, to empower us to meet our Mission Statement and to be “the hands and feet of Jesus” in our neighborhood and to be an example of God’s love for all.



APPENDIX

Church Building Details

Parish Boundaries

Although our parish boundaries are Steeles Avenue East to Victoria Park; then south to Sheppard Avenue; and finally, west to midway between Leslie and Bayview, we have many longstanding, regular attendees living outside the area who choose to worship at our culturally diverse, respectful, and welcoming church. It's worth the drive to St. Cyprians!

Parish Building/Property

The Tri-Congregational Church building was constructed in 1968 in the architectural style known as "modernism".

The main church entrance opens to split-levels with stairs ascending to two worship areas that are presently used by St. Cyprian's and Iona Presbyterian, or descending to a third worship area used by St. Christopher's Anglican (Cantonese-speaking) and to Northwood Montessori School. Just to the east of the main entrance is an auxiliary entrance with a ramp for those in wheelchairs or using walkers.

Upper Level

At the top of the stairs is a large narthex, where we greet and mingle with our brothers and sisters in Christ as we depart our service and they arrive for theirs.

Like all three worships areas, St. Cyprian's worship area has moveable, upholstered chairs, arranged in rows. Maximum seating is for 100. There are large storage cupboards located along the north wall of the room.

Adjacent to the worship space is a fellowship lounge. The lounge has soft seating, tables and a wall-length bookshelf. Bible study, Wednesday seniors' group and various other meetings are held in the lounge. Steps away is a kitchen which is shared by both upper worship area churches.

Opposite the shared kitchen is a locked room for the caretaker's supplies.

Our administrative area consists of:

- Private offices for each of the three ministers.
- Tri-Congregational Church Parish Nurse's office.
- Administrative workspaces.
- A locked sacristy, shared with Iona, is located on this upper level, just off the narthex.
- Two single-use washrooms are located in the same hallway.

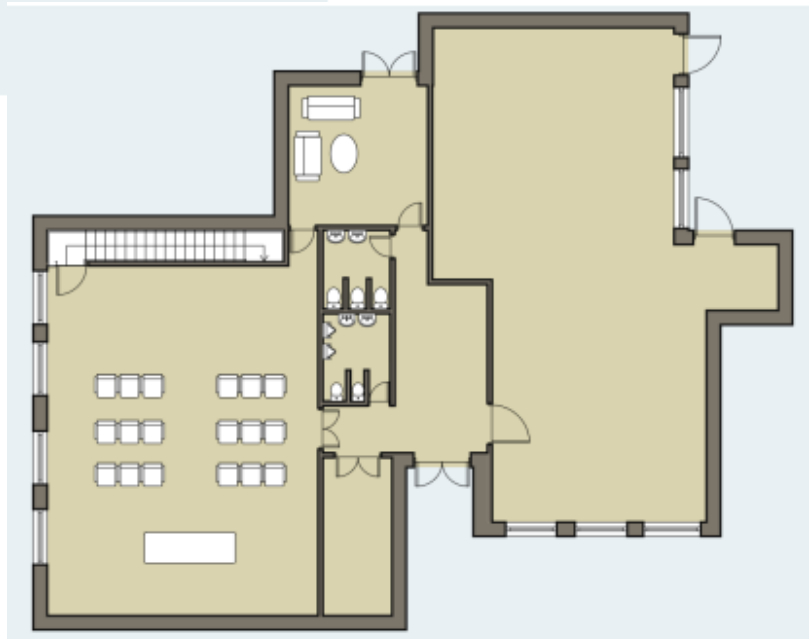
Lower Level

There is one large worship space on the lower level currently used by St. Christopher's. Additionally, there is a set of women's and men's washrooms.

Northwood Montessori School rents space on the lower level. Their area includes a small kitchen. Outdoors, between the parking lot and the main entrance, is a fenced playground, owned and maintained by Northwood.

Church Building Floor Plan

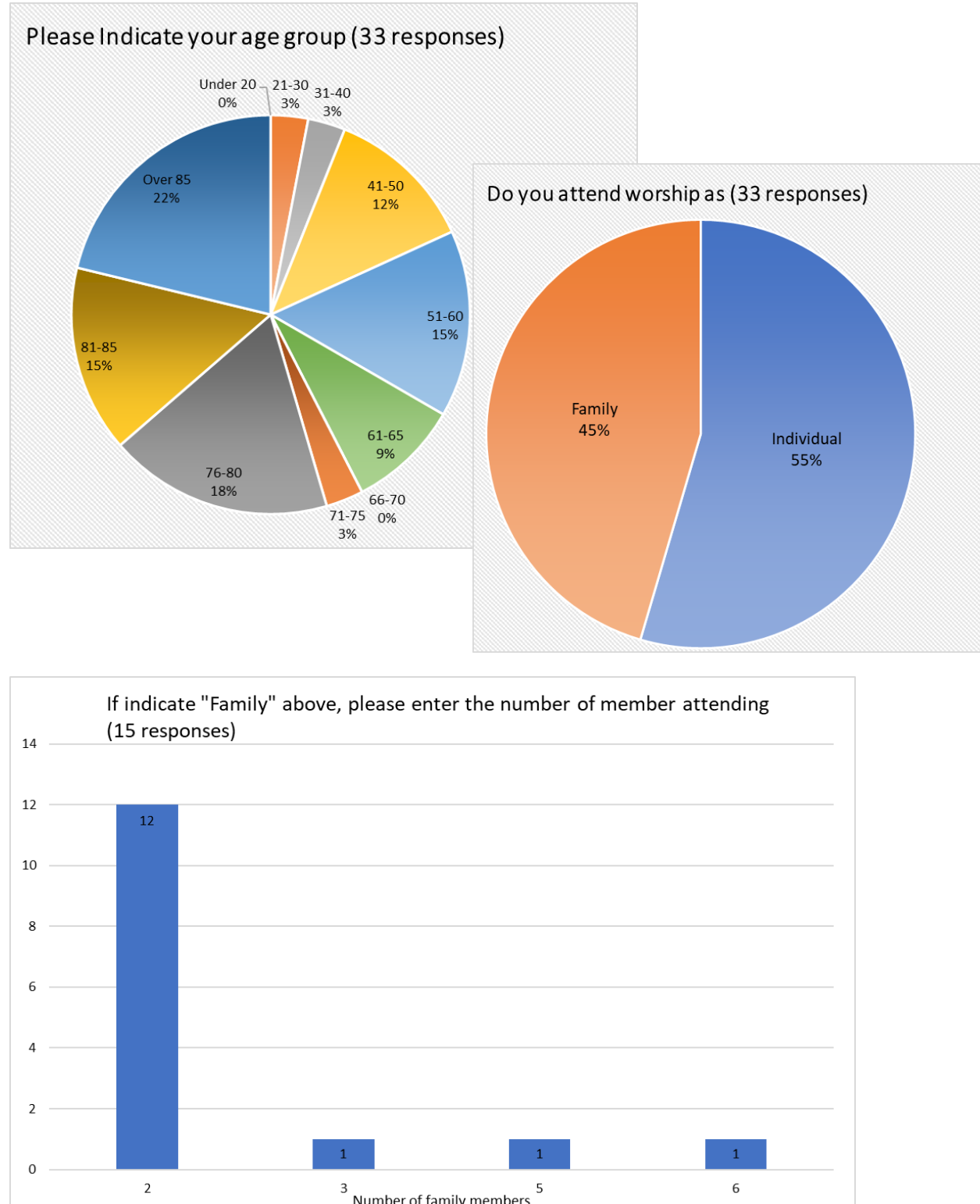
Upper Level



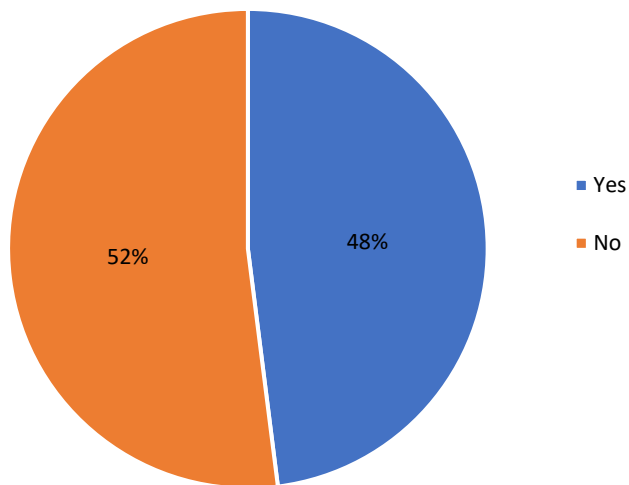
Lower Level

Town Hall Survey Data

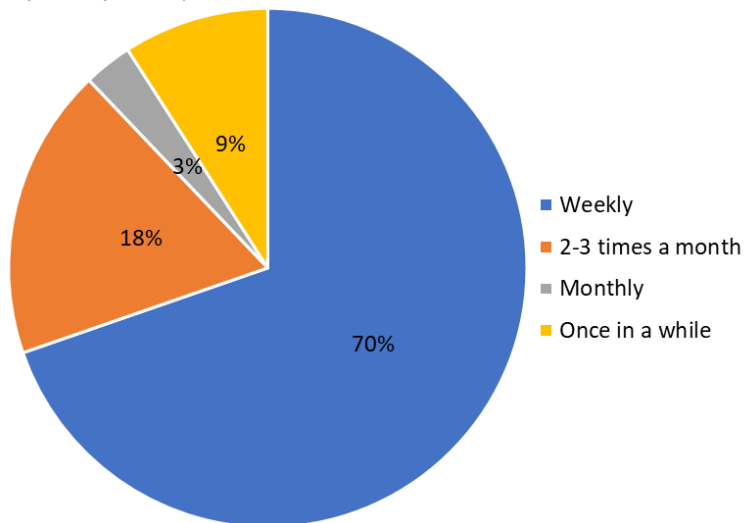
The following data is a reflection of our November 2021 Town Hall meeting and Surveys received from not only individuals but also family input:



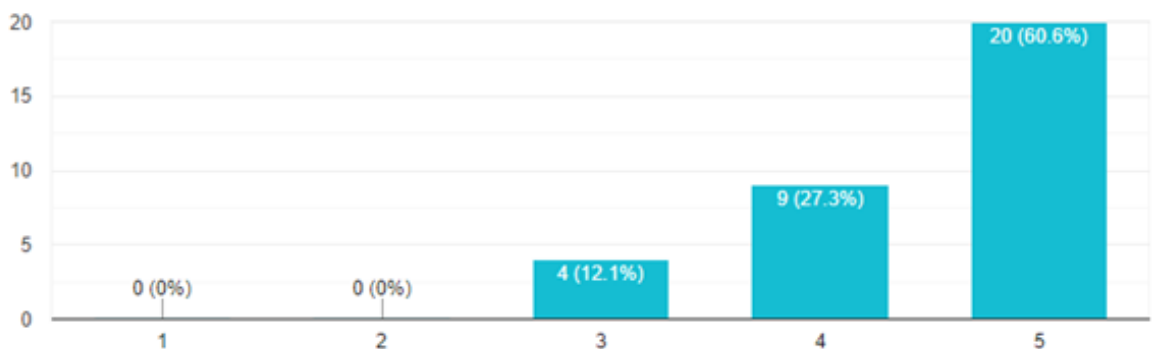
Do you consider yourself to be a visible minority?
(33 responses)



How often do you attend worship at St. Cyprian's?
(33 responses)

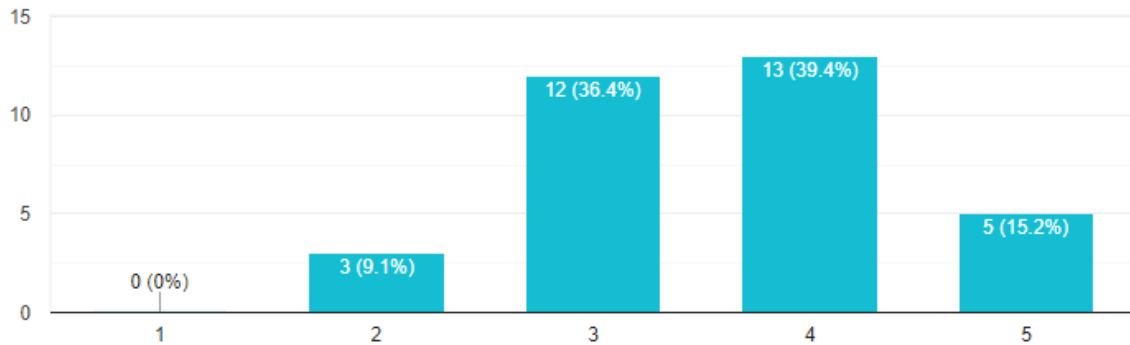


On a scale of 5 how has technology impacted your worship?
(33 responses)



On a scale of 5 how well has St Cyprian's been able to reach out to our neighbours and community?

33 responses



On a scale of 5 how much do you support each of the following:

