

St. Timothy's  
North Toronto  
Parish Profile 2022



Living our faith in  
Jesus Christ with  
Open Hearts,  
Open Minds and  
Open Arms





*Left: St Timothy's from the south  
on Old Orchard Grove*

*Below: St Timothy's from the east  
on Ridley Blvd*



*Cover Photos, from top*

- *Interim Priest-in-Charge, The Reverend Canon Michael Burgess, then Assistant Curate The Reverend Gerlyn Henry and Head Server Trish Beck just before the Easter 2022 service*
- *Preparing for a pandemic-limited Christmas Kitchen in Soward Hall, November 2021*
- *Garden Tea Party in Celebration of the Queen's Platinum Jubilee with proceeds going to City Hall's Spirit Garden, June 2022*
- *Procession at Easter season 2022 service with the choir back in person*





*Easter 2022 - many parishioners were comfortable enough to attend the service in person while others preferred to attend the service through Zoom*

At St. Timothy's, we explore our faith as a community. Our liturgical diversity as a congregation is reflected in our mission statement: Living our Faith in Jesus Christ through Open Hearts, Open Minds and Open Arms.

Jesus told us to love one another. Through our worship services, learning and spiritual development opportunities, lay pastoral visiting team and our outreach projects we strive to spread the gospel, live God's word and use our gifts to help others.

In a recent parish survey, when asked to comment on St Timothy's key strengths, by far the number one answer was the sense of community with welcoming, friendly and dedicated parishioners being cited many times. The music program, worship services, clergy and the financial stability provided by the Soward Trust were often stated strengths. A number of people also mentioned the building, the non-judgmental, inclusive community and the outreach program. Although our numbers are declining, parishioners believe St Timothy's has a future.

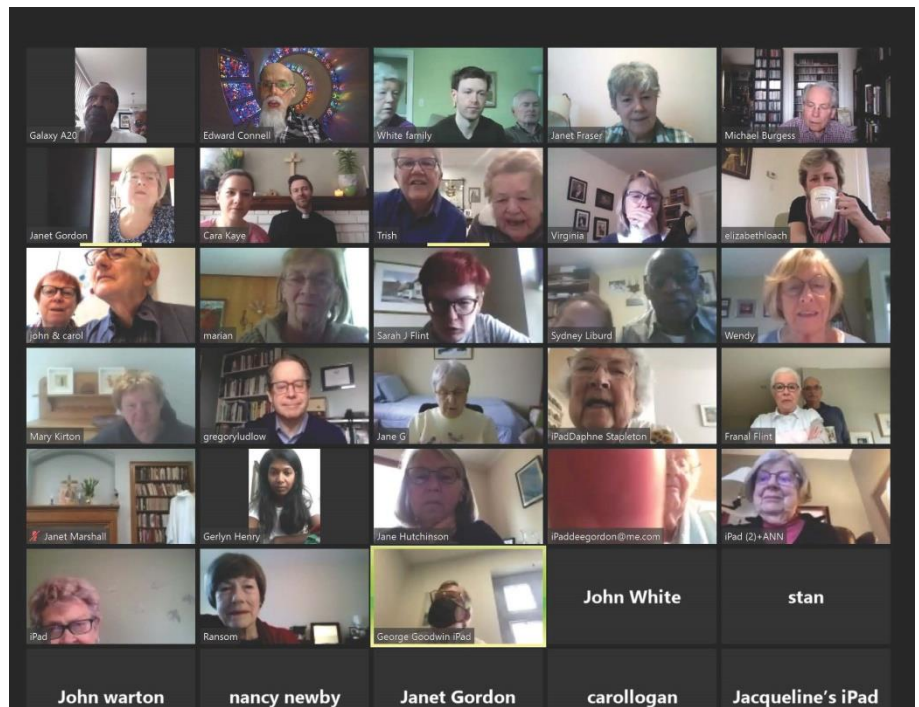
## St Timothy's Today



*Easter Vigil in pre-pandemic times*

## Worship Services

Our regular worship services and special events serve not only our congregation, but attract newcomers, neighbours, friends, children, youth, families, seniors, music lovers and even pets. Monday through Friday, a short 20 minute Morning Prayer service is held on Zoom at 9:30am. On Sundays there is an 8am in-person service and a 10am hybrid (in-person/Zoom) service. We hope to resume Sunday School at our 10am service in the fall. For more detailed information see **Appendix A.**



*April 2020 - some Zoom Sunday service attendees*





*Breakaway 2020 with Bishop Kevin Robertson as Guest Speaker*

### Learning & spiritual development

We have a number of Christian education opportunities for adults at St. Timothy's, including several lay-led groups where debates have been known to become quite heated as we struggle together with the meaning of our faith. These include Breakaway (our annual winter weekend retreat) and monthly 'C' Group and Round Table book discussion groups. In Advent and Lent, there is often a clergy led book study. See **Appendix B** for a more detailed explanation.



*Breakaway pick up hockey gang*

## Resources to Serve and Build

St Timothy's has a dedicated staff who support the spiritual, administrative and property needs of the church.

### Paid Staff

In addition to the Incumbent/Priest-in-Charge, the parish includes the following paid staff positions:

- We had a curate who recently left for her full-time role, and we expect to have an (interim) assistant priest starting in August
- A part-time Youth Minister (Elaine Vanderwerf)
- A full-time office administrator (Ashani Weerasinghe)
- A full time custodian (Gildardo Blandon)
- A part time music director/ choir master (Edward Connell)
- Paid leads in the choir

We are fortunate to have Bishop Ann Tottenham as Honorary Assistant.



*Ed Connell, St Timothy's Music Director*

### Financial Resources

St. Timothy's is debt free. For 2022, we are forecasting a deficit of ~\$480,000 after investment income. This is a result of a sizeable team (Incumbent, Assistant Priest, Youth Minister, Parish Administrator and Sexton), historically high outreach budget (\$120,000 for 2022), significant repairs that have been deferred on the building, falling givings from a decline in attendance, and property income that was impacted by COVID and has still not recovered. All of this said, St. Timothy's was blessed with a \$2.2 million bequest in 2001, which has grown since then to over \$3.5 million. Detailed financial results are provided in **Appendix C**.



### Congregational Development

Our most recent parish survey indicated a need to connect with people and to encourage younger people to attend. It mentioned loneliness, especially for older people and younger families' challenges with the high cost of housing.

Family/child focused efforts include Sunday School and a Junior Youth Group. Youth Minister Elaine Vanderwerf works part-time at both St Timothy's North Toronto and St Timothy's Agincourt so these were done jointly through Zoom during the pandemic. Plans for a weekly contemporary, family oriented worship replacing the former monthly Messy Church meetings stalled due to Covid. Occasional family outings and activities are planned to resume this fall.



*Youth Minister Elaine and the Junior Youth Group  
decorate the Little Pantry - November 2021*

This spring the Outreach Committee held a Garden Tea Party in celebration of the Queen's 70<sup>th</sup> year on the throne. This was a chance for the neighbourhood to come and enjoy free refreshments, listen to a Bag Pipe Band, watch Morris Dancers and get to know St Timothy's through chatting and asking questions. Those who wished could also make a donation which the church will direct to City Hall's Spirit Garden. We saw many new faces and were excited with how the neighbourhood seemed to receive the event.



*June 2022 - Garden Tea Party in Celebration of the Queen's 70th  
year on the throne, proceeds to go to City Hall's Spirit Garden*

We are in the process of establishing a Planning Committee to start meeting in the fall, to examine where we are, where we want to be in five years and ways to get there. The new priest will be an integral part of this planning; the fall meetings are to start the preliminary groundwork.

### Key Committees and Groups

The clergy and wardens are assisted by key committees. The Chancel Guild, Servers, Lay Readers, Intercessors and Greeters enhance our worship services. The Finance Committee, Stewardship Committee and the Envelope Secretary and Counters help with financial matters. The Lay Pastoral Visitors and Outreach Committee help us to serve others. Our newly formed Property Committee helps with the physical aspect of church life. And our Advisory Board provides advice and ideas. See **Appendix D** for more information on each committee.

Challenges: It is not always easy to get volunteers so often our volunteers take on too much. Committees also need to understand their reach and mandate, along with membership terms and appointment process. We are working on documenting governance for each committee.



*One of the monthly Men's Breakfasts, pre-pandemic*

### Community Building

In addition to getting to know one another at worship services and the various learning opportunities, there are organized occasions to socialize and church projects where a large part involves getting to know fellow parishioners better. The St Andrew's Group, Men's Breakfast, Book Group, and Choir Rehearsals occur throughout the year. Moorelands Work Weekend and Advent Pot-Luck Dinner were pre-pandemic

annual events in the fall and Advent that we hope to resume this year.

Throughout the fall there are also Christmas Kitchen Preparation sessions. Zoom Trivia Nights have occurred a few times during the pandemic. Read more about each of these events in **Appendix E**.



*September 2019 Moorelands Work Weekend – there is also lots of time to chat, relax and enjoy the beautiful surroundings.*



## St Timothy's Buildings

### The Church Building

The Church of St. Timothy, North Toronto is located at 100 Old Orchard Grove in the Yonge Street and Lawrence Avenue area of North Toronto. The cornerstone of the first church building was laid on May 14, 1932, and the first services were held in the basement. In 1934, services were moved to the newly dedicated Parish Hall; the Nave was constructed in 1950. We have a fine collection of stained glass windows done in an assortment of styles. For detailed information on the church building see **Appendix F**.

### The Rectory

The Rectory is located at 46 Ridley Boulevard, immediately to the north of the church building. The home was constructed in 1991 after a successful financial campaign raised the needed funds.

The Rectory is a large and well-maintained home with four bedrooms and two bathrooms on the upper level, a living room, family room, dining room, kitchen and powder room on the main floor and a finished basement. The house has approximately 2,500 square feet of living space on the main and upper floors. There is also a separate single car garage with a private driveway.



*The Rectory is located just north of the church building*

### Our Neighbourhood

St Timothy's neighbourhood includes good size houses, public, private and separate schools, convenient access to Toronto's transit system, and a number of parks and recreational facilities. For more about the neighbourhood see **Appendix G**.



*Yonge Street just north of Ranleigh Ave*

## St Timothy's in the Future

We believe that despite the high incomes that young families require to buy a home in our neighbourhood, the outward success masks an inward emptiness. Others who live alone may desire a sense of home and family. Simultaneously, many who have lived in the neighbourhood since when they were working are now living on fixed incomes and grappling with increasing living costs and often, loneliness and health issues. We believe that people in our neighbourhood are hungry for the Gospel, but we have not necessarily always known how to connect with them and show that our faith is relevant to their day-in, day-out lives.

We picture a Church five years from now that is flourishing, and responsive to the needs of our community while respecting our faith traditions. The doors are open, the calendar is packed with St Tim's programming both on Sundays and throughout the week, we have a stable roster of dynamic tenants, people attending a variety of programs are often becoming parishioners, and even those in our neighbourhood who are not looking to be aligned with a Christian church still look favourably on our charitable activities and often support them alongside of us. The Church is a second home for seniors, who find meaning in social groups; for young families, who have activities that engage both the children and their parents; and the needy, who receive both material and spiritual support in a welcoming and loving environment. Underpinning this all is our strong commitment to Christ, and the regular church programming (worship, Alpha, small groups, etc.). In the meantime, our flourishing as a congregation will result in a virtuous cycle financially, with St Tim's able to build upon its current elevated outreach giving to causes beyond our neighbourhood and even country.

Our thinking in this regard has been informed by a survey that we recently conducted with our parish (see **Appendix H**).



*The above-average attendance at our Good Friday family service shows there are many children and their families who could be open to more involvement with our church community.*



## How Do We Get There?

While we believe turning that picture into reality is going to be a core part of our new Priest's mandate, we are already taking steps to lay a foundation for achieving it:

Strategic Planning Committee - we are in the process of creating a Strategic Planning Committee, whose aims will be to outline the practical steps to achieve a flourishing parish. This will include analysis of our neighbourhood's and church's needs, and corresponding financial projections

Outreach Committee - we have increased our outreach budget to \$120,000 for the 2022 year. This money will be contributed to both other charities and to our own charitable activities, with ideas such as sponsoring a refugee family - which we have done twice (most recently in 2016).

Reconnecting with Former Parishioners - in the fall of 2022, we are planning to reach out personally to former parishioners who, for one reason or another, are no longer attending St. Tim's

Pickup Rota/Taxi Budget - we are considering a rota of volunteers who will be able to pick up seniors and others unable to drive and take them to Sunday services.



*At the Garden Tea Party, neighbours had a chance to have an informal chat with Interim Priest-in-Charge The Reverend Canon Michael Burgess*



*Mother's Day 2022 Baby Bundles collection for Moorelands is brought up with the offerings*

Where it is impractical to pick up somebody, we are planning to develop a small fund that will reimburse them for eligible taxi/Uber expenses

This is a selection of ideas that we hope to develop in collaboration with our new Priest, who will also have other ideas on how to achieve the parish's vision for St Tim's future.

## Our New Priest

Our new priest will be a person of prayer, solidly grounded in both the Old and New Testaments of the Bible. He/she will embody the inclusivity of our community, reaching out to humanity in all its God-given ethnic, sexual, personal and any and every other kind of diversity

Our new priest will manifest and articulate her or his relationship with God in ways that will help St. Timothy's parishioners grow in their own faith.

We place a high value on imagination and delivery in liturgy and preaching. We want our next priest to lead with us as part of a team as we intentionally re-connect as Christians with our neighbours and the broader world.

Our new priest will be comfortable working with a group of strong self-starters, used to getting on with the job rather than deferring to authority. We want her or him to be present and ready to work with a committed group of parishioners who give of their time and their money to ensure that St. Tim's doesn't just survive, but flourishes. We know that the only way this will happen is if we are able to get our message of community and love across to the young families that fill our neighbourhood. We fully expect our new priest to lead this work and provide vision and direction that the laity can implement.

At the same time, our new priest must be sensitive to the needs of our older members. Many still actively attend St. Tim's, while others are housebound or in care facilities. They all care deeply about their church and they need it to care for them as well. We have a solid pastoral care team in place, but again the new incumbent's vision and leadership will help to guide our work in this important area.



# Appendices

## Appendix A: Worship Services

### Weekday Morning Prayer

The first week of pandemic lockdown, we were fortunate that our previous incumbent, The Reverend Canon Dr Eric Beresford, foresaw the need for daily worship services and had the know-how to set this up immediately through Zoom. These 20 minute Zoom services are held Monday to Friday at 9:30am and consist of bible readings and a thought for the day. Two years in, there is a core group of at least 12 people attending each day from as far away as Algonquin and Florida. Average attendance is higher with over 30 worshippers attending at times. Interim Priest-in-Charge the Reverend Canon Michael Burgess is assisted by lay leaders. Honorary Assistant Bishop Ann Tottenham and Youth Minister Elaine Vanderwerf also often take these services.

### Sundays

St. Timothy's holds two services each Sunday: an 8 am spoken BCP Eucharist and a 10 am BAS Eucharist. The 8am service is in person only, the 10am service is currently hybrid with people attending in-person and through Zoom. Currently masks are optional.

Prior to Covid, children would leave for Church School after the opening procession by clergy and choir. They would return at the beginning of the Eucharist. We hope that this will resume again in the fall. Babies and children are always welcome to remain in the church during services. If they wish, parents can sit in the Baptistry where their children can use the small table and chairs and occupy themselves with the supplied books, crayons and toys. We plan to start the nursery up again in the fall, with a paid supervisor plus volunteer assistants.

Communion, offered in both kinds, is currently given at the base of the Chancel steps. Prior to the pandemic there was a second station at the Chapel rail using lay communion assistants as well as clergy.

There are Greeters/Sidespeople in the narthex each Sunday to welcome people. From September to June, coffee is available starting at 9:30. In July and August, lemonade is served on the front lawn after the service. We hope in the fall that we will be able to resume the after service Coffee Hour.

We are facing challenges in effectively broadcasting all parts of the service through Zoom. We are in the



*We hope to begin after service Coffee Hour again in the fall*



preliminary steps of improving our sound system. Although trying to recruit more volunteers we have only a limited pool of people available to help with broadcasting the service.

### Children and Youth

Sunday School is offered at the 10am service. During the pandemic this went onto Zoom and was done jointly with St Timothy's Agincourt. In the fall the hope is to return to having in person Sunday School class, but starting after communion, so children will be in the service. They would leave after they had received the elements and would have class through coffee time. This would allow the children to worship with the congregation and then keep them occupied and not running amok while the parents enjoy some fellowship.



*Junior Youth Ice Cream outing June 2022*

Junior Youth Group: As we don't have a lot of high school students at the moment, a Junior Youth group for grades 4 – 8 was begun. During the pandemic they met on Zoom every other week and Senior Youth met on the other weeks. These were both open to students from both St. Tim's (North Toronto and Agincourt). In the fall as we return to in person activities, the hope is to continue the every other week pattern for the Junior Youth and perhaps as they age, there will be a Junior and Senior group that might do some activities together and some separately.

Messy Church: there has been some discussion of changing Messy Church into a weekly contemporary, family oriented worship service and once a month would "get messy" by having



*Cookie baking event pre covid*

a meal and more activities. This idea has been embraced in theory by many of the young families, but with Covid it never got off the ground.

Family Fun times: there are plans to organize a few family outings and/or activities over the course of the year. Again with the pandemic these have been on hold and will be returning this year.

### Highlights and Special Services

- Baptism services
- Confirmation services; most recently celebrated at St James Cathedral but prior to this celebrated by Honorary Assistant Bishop Ann Tottenham
- Ash Wednesday
- Maundy Thursday with foot-washing for all who wish to participate
- Good Friday, a family service at 9:00am – following the cross using a modern liturgical format plus crafts, followed by solemn meditation service for adults at 11:00am
- Easter Vigil, starting outside at the main church doors in darkness
- The Blessing of Animals on the feast of St. Francis of Assisi held outside on the front lawn
- Advent Carols and Lessons, and/or Candlelight Carol Service



*Blessing of the Animals*



*Easter 2022 Baptisms were held at both the Easter Vigil and Easter Day services*





*Spring 2022: Pre-service choir practice with masks and distancing*

### Music

- We are blessed to have one of the best organists/ pianists in the city as our Music Director, Mr Ed Connell. Additionally we appreciate the music produced on our new (2018) Phoenix 4 manual digital organ.
- The mass setting for the 10 am service is often the St Timothy's Mass created by the late J. Anthony Dawson, a long-time parishioner. During Advent, Lent, and in the summer months, other mass settings are used.
- Hymns and music liturgy are chosen to follow the themes and readings of the day, while being innovative and accommodating to varied tastes / styles in music and liturgy
- The choir's repertoire for anthems ranges from traditional early church settings to modern gospel and jazz
- There are generally four paid leads in the choir,
- Designated donations supply a brass quartet at Easter and for extra leads at Christmas and Easter to help augment our programming
- Highlights for the choir in the church year include Easter Vigil Service, Easter Day, Pentecost, Christmas Eve services, Advent services.
- During the pandemic, the choir continued to meet at their Thursday rehearsal time on Zoom and sing together. Leads pre-taped hymns and anthems for the Sunday 10 am worship services, ably led and accompanied by Ed Connell who also played a prelude and postlude each Sunday.

### Appendix B: Learning and Spiritual Development

**Breakaway Weekend** Put on hold the last two years, this event has occurred for 20+ years, around the beginning of February at Fair Havens Bible Conference near Beaverton. We had roughly 80 attendees in the last few pre-pandemic years. A guest speaker gives three talks to the adults over the weekend while the children have supervised fun. People arrive when they can on Friday night to find a hot-pot dinner waiting. A break-the-ice session happens around 8pm setting the relaxed and friendly tone for the weekend. Fair Havens provides meals on Saturday and Sunday, giving attendees many opportunities for conversation. There is time to enjoy the country air Saturday afternoon, participate in a pick-up hockey

game, cross-country skiing, skating on a frozen pond or going for a walk. On Saturday evening the always-entertaining *Saturday Night Alive* occurs. This 'talent' show consists of skits, musical performances and other acts parishioners dream up. An informal Eucharist is held Sunday morning followed by a hot lunch before everyone gets on their way.

**The Downtown "C" Group** This group meets monthly, as it has for some 25 years. They shifted to Zoom meetings until recently. There is normally a break between July and August. Beginning in September 2022, the plan is to meet in the Parlour of St. Timothy's. Originally made up of interested businesspeople working downtown, most members are now retired. It is open to anyone interested. Featuring lively and loving debates over lunch, the members have read books as diverse as "The Zealot" and the works of Marcus Borg. They are currently studying "The Rebel Christ" by Michael Coren.

**Round Table** The Round Table is an open group of 8 - 10 people who meet once a month to share their thoughts around a chosen book. They look for Progressive Christian authors whose books will kindle discussion. They have just finished "Unbelievable" by Bishop John Shelby Spong - a favourite author of the group. It has stimulated much discussion of where each person is at in their faith journey and how church traditionally expresses this faith.

The next title will be "Reimagining God" by Lloyd Geering. The traditionally meets over Sunday lunch, but since Covid, have meet over Zoom screens. New members are encouraged to join this group.

**Seasonal Book Study** Usually for Lent and Advent a Book Study is held, led by the clergy. Prior to the pandemic, this was often done after the Sunday service.

## Appendix C: Financial Resources

Dr. Reginald Soward was an active member of St. Timothy's for decades. Dr. Soward bequeathed \$2.2 million to St Timothy's and this bequest is known as the Soward Fund. The Soward funds are invested in Consolidated Trust Fund of the Diocese of Toronto and to date have funded over \$1,000,000 of projects at the church. The value of the Soward fund has grown to more than \$3.5 million.

Property income is expected to be ~17% of total revenue in 2022, which is significantly lower than it has been historically in both absolute and relative terms. The Wardens and Property Committee are looking to replace tenants lost during COVID to ensure the Church's financial sustainability into the future.

Spending on the property has been deferred for several years; in 2022, with a reprieve in the COVID pandemic, Vestry approved ~\$240,000 of property capital spending, on top of ~\$80,000 of maintenance and repair spending. This includes roof repairs, boiler/HVAC repairs, replacement of an aging door with electronic lock system, and a new sound system



Church of St Timothy North Toronto				Page 1
COMPARATIVE 2022 BUDGET				
REVENUES	2021 Budget	2021 Actual	2022 Budget	Delta 22B vs 21A
ORGANIZATIONS	0	800	800	0
BEQUESTS & MEMORIAL GIFTS	0	117,174	0	-117,174
ORGAN DONATIONS	240	12,140	9,500	-2,640
REGULAR ENVELOPES	20,350	13,565	14,922	1,357
SPECIAL PERSONAL	24,000	25,518	28,069	2,552
ELECTRONIC FUNDS TRANSFER	178,075	185,673	192,171	6,499
OTHER & SEASONAL GIVINGS	7,000	1,869	2,056	187
CANADA HELPS (Our Website)	3,000	3,817	4,198	382
DESIGNATED DONATIONS	33,000	55,153	19,645	-35,507
OUTREACH INCOME/GIVING	16,200	24,608	18,784	-5,825
TOTAL DONATIONS	281,865	440,316	290,145	-150,171
OFOH GRANT	14,420	14,420	0	-14,420
PROPERTY INCOME	39,692	37,223	64,757	27,534
SPECIAL EVENTS	9,100	17,629	13,279	-4,350
INVESTMENT INCOME	9,804	8,976	8,976	0
CEWS GRANT	0	22,405	0	-22,405
<b>TOTAL REVENUE</b>	<b>354,881</b>	<b>540,969</b>	<b>377,157</b>	<b>-163,812</b>
<b>EXPENSES</b>				
DESIGNATED DONATIONS (Faithworks, PWRDF)	16,000	16,514	16,514	0
OUTREACH FROM CHURCH FUNDS	67,500	67,279	120,000	52,721
DESIGNATED DONATIONS (Other Outreach)	200	5,697	520	-5,177
TOTAL DESIGNATED DONATIONS & OUTREACH	83,700	89,490	137,034	47,544
DIOCESAN ALLOTMENT	64,668	62,835	59,902	-2,934
OFFICE AND ADMINISTRATION	31,658	33,635	37,514	3,879
CHURCH UTILITIES	45,964	32,116	46,707	14,591
PROPERTY MANAGEMENT	20,000	0	0	0
INSURANCE	23,029	23,029	26,148	3,119
MAINTENANCE & REPAIR	58,889	68,799	82,349	13,550
RECTORY	9,456	9,375	14,375	5,000
TOTAL PREMISES	157,338	133,318	169,579	36,261
YOUTH & CHURCH SCHOOL	960	465	3,685	3,220
CHURCH LIFE	9,490	6,228	9,301	3,072
LECTURESHIP - SOWARD	0	0	0	0
MUSIC	26,300	14,217	38,720	24,503
TOTAL PROGRAMS	36,750	20,910	51,706	30,796
SPECIAL EVENTS	3,536	3,955	2,814	-1,140
WAGES AND BENEFITS (including Sexton)	343,639	341,629	349,465	7,836
<b>TOTAL EXPENSES</b>	<b>721,288</b>	<b>685,772</b>	<b>808,013</b>	<b>122,241</b>
<b>NET INCOME</b>	<b>-366,407</b>	<b>-144,803</b>	<b>-430,856</b>	<b>-286,053</b>
<b>EXCESS/DEFICIENCY REVENUE vs EXPENSE</b>	<b>-366,407</b>	<b>-144,803</b>	<b>-430,856</b>	<b>-286,053</b>
ORGAN DONATIONS REPAID TO SOWARD	-11,111	-21,891	-10,620	11,271
NET TRANSFER to(-)/from(+) M&G FUND	0	0	0	0
SOWARD FUND	136,925	136,925	153,999	17,074
DRAW FROM OFOH FUND	0	0	36,106	36,106
MEMORIAL ENDOWMENT FUND	5,337	5,278	4,479	-799
EXTERNALLY RESTRICTED FUNDS	2,938	2,906	2,823	-83
INTERNALLY RESTRICTED FUNDS	3,896	3,853	3,744	-110
<b>NET OPERATING PROFIT/LOSS</b>	<b>-228,422</b>	<b>-17,732</b>	<b>-240,325</b>	<b>-222,592</b>
<b>Cash on Hand Dec 31, 2021</b>				<b>303,684</b>
LESS TRANSFER TO M&G FUND				<b>0</b>
LESS NET OPERATING PROFIT/LOSS				<b>-240,325</b>
LESS 2022 PROPERTY BUDGET				<b>-240,611</b>
PLUS ADDITIONAL DRAW FROM SOWARD TO \$40K CASH BAL				<b>217,251</b>
<b>Forecast Cash on Hand Dec 31, 2022</b>				<b>40,000</b>

## Appendix D: Key Committees and Groups

**Advisory Board** The Advisory Board includes the Clergy, Youth Minister, Wardens and Deputy Wardens, Lay and Alternate Lay Members of Synod, and five elected members-at-large. The Board currently meets four times a year. The Clergy and Churchwardens provide updates to the Board on the church matters; the Board provides ideas and advice to the Corporation. A financial update is provided at each meeting. The Board also reviews and then approves the proposed budget prior to the Annual Vestry.

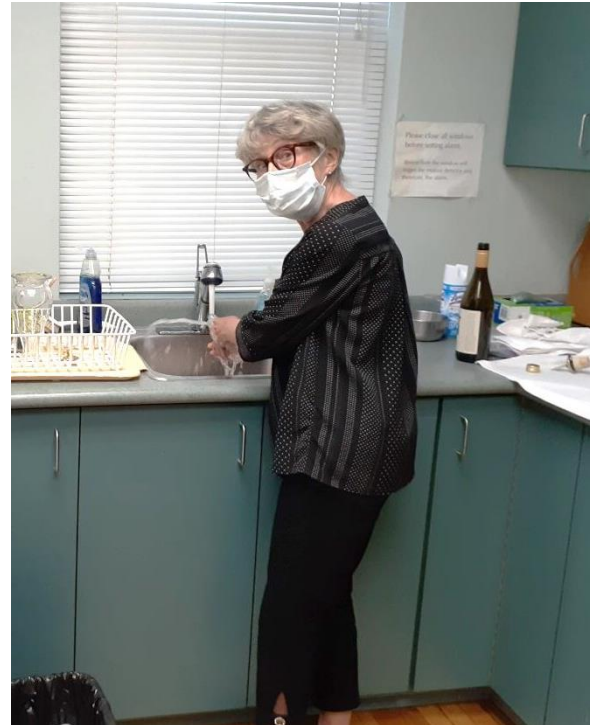
**Chancel Guild** The Chancel Guild is responsible for cleaning and maintaining the linens and preparing the flower arrangements that adorn the Altar on Sundays. Their numbers are small with two people taking care of doing the Eucharist setup and three people doing flowers. Through the pandemic, the clergy has taken on a greater role in the Eucharist setup, especially in the summer months.

**Envelope Secretary and Counters** We are fortunate to have a dedicated team of counters to process the offerings overseen by the Envelope Secretary. The Envelope Secretary keeps track of givings and processes the monthly electronic Pre-Authorized Givings (PAGs). Although sidelined for the past two years, the counters are returning to their pre-pandemic roles.

**Finance Committee** The Finance Committee members are the Clergy, Wardens and Deputy Wardens, and five or so parishioners who are interested in Finance. The Finance Committee meets four times per year to review the church finances in greater detail than the Advisory Board. The Committee carefully examines the proposed budget prior to Vestry providing recommendations and then approval. The Committee annually recommends to the Wardens the amount of funds required to maintain the capital of the Soward Fund and the amount available for use by the Church of St. Timothy in the upcoming year.

**Greeters** Greeters welcome people at the church doors, handing out bulletins and answering questions.

**Lay Pastoral Visitors** The Lay Pastoral Visitor volunteers provide pastoral support via phone calls and visits under the guidance and supervision of the clergy of St Timothy's. The people supported are usually people who are unwell, isolated, lonely, grieving, and perhaps unable to come to worship in person. As of June 2022, eight visitors look after about fifteen people. Since the onset of the COVID-19 pandemic new needs have been identified and met, such as helping someone get their COVID vaccination scheduled and administered. Visitors have distributed Easter and Christmas flowers to the people they visit.



*Chancel Guild member hard at work*



**Lay Readers and Intercessors** We have a number of regular readers and lay intercessors. For our hybrid services, due to technology problems, readers and intercessors need to be physically present at the service.



**Property Committee** This Committee started up again in Spring 2022. It consists of the wardens and interested parishioners. Committee members assist the wardens identify work that needs to be done and in obtaining quotes. With the large, aging building, the rectory and generous grounds, there are always things in need of attention. This year's major project is the flat sections of the church roof.

**Outreach Committee** – please see **Appendix F**.

**Servers** We are fortunate that our Interim Priest and Youth Minister are actively trying to recruit servers for the fall. Currently we have one adult and one youth server. When needed, others fill in as best they can.

**Stewardship Committee** We realize the importance of recommitting ourselves annually to do God's work in our community and beyond. We hope to revive this important Committee which has lapsed in pandemic times. Pre-pandemic, the Joyful Giving Campaign began in the fall with a Coffee Hour Ministry Fair to give parishioners the chance to learn more about the activities of church groups and the opportunities to get involved. Each November there would be two Lay Witness Talks given at Sunday service. A Stewardship Package with a letter, Narrative Budget and pledge card were sent to members of the congregation. Pre-authorized giving was also an important focus of these campaigns. Last year, only the Stewardship Package portion of the campaign was achieved.



*Stewardship Committee's Ministry Fair pre-pandemic*

## Appendix E: Community Building

**Advent Pot-Luck Dinner** Put on hold the last two years, this dinner is usually held annually on the Saturday before the First Sunday in Advent, features delicious food and a loud din of conversation followed by an Advent and Christmas hymn sing-along. Close to 100 parishioners of all ages attend this annual start to Advent.

**Book Group** The Book Group meets monthly throughout the year with about 12 active members gathering to discuss a book. Titles range from fiction to non-fiction, history and biography. During the Pandemic the group has met on Zoom twice a month. They continue to discuss a book monthly and also have a monthly Coffee Chat meeting just to socialize together.



*The Book Group recently met in person for the first time since Covid began in a parishioner's backyard*

**Choir** St. Timothy's Choir meets for rehearsal each Thursday, from 7:30 to 9:00 pm. during the fall, winter and spring (Sept~June). Under the direction of Music Director Ed Connell and with the help of four brilliant leads -- one in each section -- they prepare to lead the sung liturgy, the hymns and an anthem for the main Sunday service. They are a stable group, but always happy to welcome others in the parish who would like to join their ranks. Once or twice a year they have a social evening with treats and lots of laughs. (They also laugh, chat and enjoy the weekly rehearsal process.) Being part of the choir is a very special way to contribute to the life of the church, and St. Timothy's music program has been one of its strengths for years.



**Christmas Kitchen Preparation** The Christmas Kitchen started as a fund raiser but has developed into a neighbourhood event with people coming back year after year to stock up on their seasonal favourite goodies, bid on things in the Silent Auction or enjoy a Ham on a Bun Lunch. For children, there is also a Young Shoppers' Room for those aged 12 and under to buy presents for their family (nothing costs more than \$7). Santa also pays a visit, giving people a chance to have a photo with him in a relaxed setting. This

*Pre-pandemic Christmas Kitchen Preparation baking session*



event has been severely limited during the pandemic and conditions will determine the extent of the sale this year.

Holding this event requires a lot of preparation. In January/February when the Seville Oranges are in season, we gather to prepare marmalade. Then in the fall, the Christmas Kitchen Cooking sessions begin. These increase in frequency as the Sale approaches. We gather to prepare the things that are top sellers such as fruit cakes and tourtieres. No matter what one's skill level is, there are always jobs one can do. This is a time of fellowship and fun as we work side by side to prepare for the event.



*The Men's Breakfast group traditionally serves breakfast to all the women in the parish on Mother's Day*

**Men's Breakfast** The Men's Breakfast occurs on the second Saturday of each month (minus July and August) with a core group of 18 - 20 men attending. The aim of the group is for the men to get to know one another better resulting in closer friendships. They have held the breakfast over Zoom from March 2020 until now. They hope to get back to in-person breakfasts in September. Breakfast is typically prepared by a pair of fellows according to a monthly rota. It is served at 8:30 and following breakfast, the group may have a get together in the Parlour to review different topics. Other times, one of the men may speak of his life and spiritual journey. Covid permitting, the Men's Breakfast group hosts an annual Mothers' Day Breakfast before the 10am service and all women, whether they are mothers or not, are invited to attend. The men, many clad in tuxedos, serve the women a delicious breakfast and clean up afterwards – both much appreciated by the women. This group also provides the Starbucks coffee in the narthex before the 10am service.

**Moorelands Work Weekend** Not held for the past two years, we hope to resume this annual work weekend this fall, Covid permitting. This is a chance for parishioners, their friends and their families to help Moorelands Camp by providing helping with such jobs as painting cabins, small carpentry work, tidying laundry rooms, moving things - there are jobs for all skill levels! Volunteers make their way to a Kawagama Lake marina on Friday night to be picked up and taken to Moorelands Camp by boat. They stay in cabins and share meals in the dining hall. Saturday morning after breakfast, jobs are assigned and the work begins with a break for lunch. Late in the afternoon, there is free time where one can explore the camp, swim if the weather is warm and enjoy each other's company. After dinner there is usually a campfire with roasted marshmallows. Sunday morning people may work a bit more before an informal Eucharist service. The stay ends immediately after Sunday lunch with boat rides back to the marina. Participants pay a set cost to cover the cost of meals. Participants enjoy a fun weekend in a beautiful setting while providing assistance to Moorelands Camp. Recently people who attended the first years of Moorelands Camp as teenagers have returned to help with their own children in tow.

**St Andrew's Group** The St Andrews Group is a friendly, relaxed and sociable group of 20 - 30 women mainly from the Parish but not exclusively. Our 60 minute weekly (Zoom) meetings average 14 - 17 people and we even have members joining us from Atlanta Georgia, Nelson B.C., Whitney and Lindsay Ontario! The St Andrews Group has been meeting for the past 66 years with the same purpose - women getting together to raise money for the Church and charity in the context of weekly gatherings. From the beginning the members chatted, discussed anything from home to the state of the world, produced a range of handcrafts from quilts to knitted baby garments, hosted fundraising events and generally supported each other in small caring ways. The moneys raised are given to St Timothy's and other worthy causes as the group feels appropriate. We hope to resume some form of in person/ hybrid meetings starting in the Fall of 2022 and once again incorporate a short Eucharist Service before the meeting. We have enjoyed short drop-in visits with the Clergy at many of our meetings.

**Zoom Trivia Nights** Initiated during the pandemic, this has been a chance to have fun with fellow parishioners from the comfort of one's own home. Attendees are divided into groups and split into chat rooms to try to answer a varied set of trivia questions.



*The St Andrew's Group Annual Tea and Spring Fashion Show features St Timothy's models, the latest fashions and home baked treats.*



## Appendix E: Our Church Building

The church building is constructed of honey-coloured limestone in the Gothic style of architecture. We have a small parking lot for staff, visitors and a handicapped spot located on the west side of the property. Additional parking is available on the neighbourhood streets.

Weekday access to the property is available through the parking lot and on the east side through the doors at the rainbow fence on Ridley Boulevard. We have a key-operated elevator from the parking lot allowing access to the main floor, including the offices, the Nave, Soward Hall and the Henry Marsh room. The worship space itself seats a total of 600 and includes the balcony, the chapel and the baptistery. Throughout the Nave and above the high altar are beautiful stained glass windows generously donated by parishioners over the years.

### ***The main floor includes:***

- Soward Hall (30 ft. x 45 ft.) and connected Kitchen (22 ft. x 15 ft.). The kitchen contains two stoves, a refrigerator and microwave oven as well as a high-speed industrial dishwasher;
- Library and Meeting room adjacent to Soward Hall;
- The Marsh Room, also known as the Parlour, (30 ft. x 20 ft.) is used for medium-sized meetings related to church business, church groups or outside rental customers
- Two clergy Offices;
- Church Administration Office;
- Youth Minister Office;
- Nursery Classroom with children's washroom
- The Sacristy;
- Various storage and cloak rooms; and
- washrooms including a family/wheelchair accessible washroom

### ***The second floor includes:***

- Sunday School Loft;
- the Archives Room, named after Thomas M. Millman an Honorary Assistant for 33 years at St. Timothy's;
- the boardroom;
- the music director's office; and
- a large classroom

### ***The basement includes:***

- a large gymnasium (60 ft. x 57 ft.) with two adjacent washrooms;
- a large kitchen (27 ft. x 16 ft.) containing 2 stoves, a refrigerator and an industrial high-speed dishwasher;
- three classrooms
- Men's and Women's choir change rooms with two adjacent washrooms;
- large caretakers room and various storage areas; and
- the Boiler Room.

## Appendix F: Outreach

The Outreach Committee provides leadership to the parish in helping those in need in three ways. Each year, money is used from givings to support worthy causes in the community. In addition, some of this outreach budget minimally funds projects where parishioners can be involved in helping in the community. Effort is also expended in letting parishioners know about worthy causes that they can support with their own funds.

### Hands On Opportunities

Prior to COVID, parishioners held a **monthly community lunch** and also prepared and served a **monthly meal as well as baking cookies for the residents of St. George House**, a high needs boarding house in Toronto. For many years, parishioners enjoyed a **fall weekend at Moorelands Camp, building and helping** with the end of season clean-up. We are hopeful that all of these opportunities for our members to help in our community will be up and running again soon.

Our most recent project has been the **Little Free Pantry**. Envisioned by the outreach committee, built by a congregation member and painted by the youth group, the Little Free Pantry sits at the entrance of the parish doors. During the Pandemic, this has served as an opportunity to meaningfully and safely engage with those in our community and neighbourhood in providing nutritious, hygienic and accessible food. Best news is that anonymous neighbours regularly contribute to the stock in the pantry. The Pantry's vision: ***GIVE what you can and TAKE what you need*** is really working.

For many years we have had two Christmas gift projects: Once again, in 2021, we participated in **Moorelands Christmas Sharing**, adopting two families and providing grocery gift cards and Christmas gifts for six children in two families. We also gave gift cards at Christmas to the twenty-six residents of



*Moorelands Work Weekend tour of the camp*



**St. George House.** In addition, we continued to hold our annual collection of baby items on Mother's Day to support **Moorelands Kids' Baby Bundles** program.

On June 4 2022, the Outreach Committee and the Parish hosted a **Queen's Jubilee Tea** on the front lawn of the church property. It was a joyous occasion with entertainment provided by a Bagpipe and Drums band and also some very energetic Morris Dancers. Gallons of tea, lemonade and myriad sweets were served; the community and church members and 3 corgis had a grand time, and in conjunction with parishioners givings, over \$3000 was raised for the Spirit Garden to be built in City Hall Square to remember the victims of residential schools.



*Little Free Pantry Dedication - November 2021*

### **Encouraging parishioners to give as they wish.**

The Outreach Committee spearheads the annual Faithworks campaign as well as an Advent Conspiracy project - in 2021 - in support of Water First (via PWRDF) . In 2021 , over \$20,000 was given to these causes through the church. St Timothy's has raised nearly \$225,000 for Faithworks over the past 25 years.

### **Support for Others from the Church Budget**

Funds allocated to the outreach budget provide for financial donations in support of several excellent community organizations. During COVID, our donations have been directed to organizations providing food to those less fortunate than ourselves, including Able Kids Rehab in Malawi and closer to home,

Flemingdon Park Ministry, Moorelands Kids, North York Harvest Food Bank, The STOP Community Food Centre and the St Stephen in-the-Field Anglican Church meal program. A recent parish survey confirmed hunger and houselessness as two top priorities.

In 2021, a one-time **COVID Emergency Grant** was approved at Vestry. The Outreach Committee researched and recommended to the wardens, the amounts that five organizations would receive from the \$50,000 grant. Recipients of part of the funds were: St Stephen in-the-Field Church and All Saints Church and Community Centre (for their frontline work in delivering food and other supports to those most in need in downtown Toronto), Toronto Urban Native Ministry (for their frontline support to First Nations residents of Toronto), St Bartholomew's Church (for their food program in Regent Park) and The Anglican Diocese of Mishamikoweesh in Northern Ontario and Manitoba. Understanding that First Nations were particularly hard hit by the pandemic, the parish directed 30% of the One-time Special COVID Donation to First Nations-run organizations.

Vestry in 2022 has approved additional outreach expenditure, leading to a total budget of \$120,000 of Outreach giving, compared to \$18,000 to \$20,000 in recent years. To date, some of these funds have been allocated to the above recipients and consideration is being given to a number of other worthy projects and recipients.

### The Future

At the same time as these allocations were made, we realized that we need a strategic plan that incorporates a method of determining reasonable expenditures for outreach on an ongoing basis. To that end a Strategic Planning Committee is being created by the churchwardens.

A recent survey of the community as well as a parish survey and a Parish Town Hall to discuss the proposed expenditure of outreach funds for 2022 brought many worthwhile suggestions. A wish to make use of our building to provide support for families and lonely seniors in our community and a desire to sponsor another refugee family were among the significant suggestions made.

### The Old Orchard Blossoms

The Old Orchard Blossoms is an outreach group of St Timothy's Church with approximately 15 active members supporting the work of the Stephen Lewis Foundation and its Grandmothers to Grandmothers Campaign. Founded in 2006, the women of the Old Orchard Blossoms were inspired by the amazing African grandmothers supporting their grandchildren and other orphans created by the HIV and AIDS pandemic in sub-Saharan Africa. Their mandate is to raise awareness of the grandmothers' supportive role in the HIV and AIDS epidemic and to raise funds to assist grassroots projects run by and for African grandmothers. These amazing grandmothers are central to the life of their communities and to a whole generation of orphaned children.

Our members today include women from the church and the community. To date, the Blossoms have raised over \$250,000 – our contribution to the \$40 million raised for the Grandmothers Campaign by 240 grandmother groups in Canada. This money has been raised through a variety of projects including



concerts, pub nights, wine tastings, sales of greeting cards, our fair-trade marketplace, and by participating in the annual national fundraising walk, “Stride to Turn the Tide

## **Appendix G: Our Neighbourhood**

Ward 16 is bounded by Bathurst Street to the west, Yonge Street to the east, Highway 401 to the north and Eglinton Avenue to the south. It has a physical area of ten square kilometers and was home to 54,720 people and 21,410 households as of the 2016 census. The Ward is considered to be affluent compared to the city as a whole, with an average household income of \$233,103 versus \$102,721 for the entire city. Strikingly however; eight percent of the households have an annual income of less than \$20,000 (source: [https://www.toronto.ca/wp-content/uploads/2018/05/8f07-City\\_Planning\\_2016\\_Census\\_Profile\\_2014\\_Wards\\_Ward16.pdf](https://www.toronto.ca/wp-content/uploads/2018/05/8f07-City_Planning_2016_Census_Profile_2014_Wards_Ward16.pdf)).

50% of the population lives in single detached homes and 73% have a university degree. While the city of Toronto is one of the most culturally diverse cities in the world, Ward 16 is considerably more mono-cultural. English is the mother tongue for 74.2% of the residents in the Ward and 27.6% of residents were born outside of Canada compared to 47% for the city as a whole.

The median age of the neighbourhood population is 40 however like many parishes the average age of St. Timothy’s parishioners is considerably higher.

The St. Timothy’s neighbourhood is well served by major transportation routes. Yonge Street and Avenue Road are major north-south arteries, while Wilson and Lawrence Avenue provide easy east-west access. The neighbourhood is located in close proximity to Highway 401, which is easily accessible from either Yonge Street or Avenue Road. Public transportation is also convenient. Bus routes are located on all major streets as well as Yonge Blvd., which connects Yonge Street with Wilson Avenue. The Lawrence and York Mills subways are within walking distance from the church location.

The local community is well served by cultural and recreation programs and facilities. A community centre is located at the southwest corner of Avenue Road and Wilson Avenue. Depending on the season, city run tennis courts or skating rinks are operated at Otter Creek, located behind Lawrence Park Collegiate. Arenas are located at York Mills Road and Bayview Avenue and behind the North Toronto Community Centre on Eglinton Avenue, west of Yonge Street. There is a city-run outdoor public skating rink at Otter Creek. The Toronto Centre for the Arts is located on Yonge Street just north of Shepherd Avenue.

A number of major hospitals are within close proximity to St. Timothy’s including North York General, Sunnybrook Health Centre and Humber River Regional. Many medical/dental/diagnostic centres are within walking distance.

## Appendix H: St Timothy's in the Future

In support of the ongoing selection process, St. Timothy's conducted two surveys.

### First Survey

The first survey was conducted in April 2022. The goal of the survey was to solicit feedback from the congregation on how to move forward in finding a new priest. Three options were provided, per canons and the advice of the Bishop:

1. Parish Selection Committee consisting of two wardens/deputy wardens and four to seven parishioners, along with Diocesan coaches. The process results in an Incumbent being appointed for an indefinite period. The process takes 12-13 months from appointment of the Committee
2. Direct Appointment by the Bishop for a specific contract length, and then possibly a full-time appointment. The process may take only a few months
3. Bishop working with Churchwardens to Select a Priest in Charge, with a specific contract length and then possibly a full-time appointment. The process may take 6-8 months

St Tim's received 76 responses, with 69 of them from a Google Form that was distributed, 3 directly by email, and 4 over the phone. The survey used ranked voting. The result was clear, with 49 out of 76 (64%) selecting option #3 as their top choice. The wardens decided to proceed with option #3, with the congregation's "blessing".

### Second Survey

The second survey was conducted in June 2022. The goal of this survey was to solicit feedback from the congregation about the parish itself, its role and opportunities vis-à-vis the surrounding community, and the key characteristics desired in a new priest. 55 parishioners responded, with one person under the age of 50, and 10 people under 65.

Overall, the feeling of the parish is that while there is a strong sense of mission, and a strong sense that the parish has a good future, the parish is not growing. Parishioners are very dedicated, with many holding volunteer positions for many years, but the parish has been only partially successful in attracting and retaining new people, including younger people with families.

The top 5 qualities desired in a new priest (in descending order) are:

1. Good preacher/teacher
2. Collaborative
3. Welcoming
4. Pastoral
5. Possessing a sense of humour

Many responses were rich and detailed, so what follows are a number of excerpts.



On the needs of the community around St Tim's:

- Need for meaningful connections, loneliness and lack of social support, economic strain in the midst of an affluent neighborhood, food insecurity, sustaining housing for self, children. maturing young adults, and aging parents. Small groups provide context for connection, social bonding, and problem solving so nurturing small groups would benefit the whole community.
- The main line denominations (including Anglicans) are not particularly good at attracting new members from the unchurched population. But, in my mind, we are called more to serve than to convert. That service is both local as well as national/international ... the local can be reached through direct support of individuals and causes in our immediate community while the national/international efforts are addressed best through financial contributions. I think St. Tim's has a history and culture of doing both ... it is a parish strength. Engagement with Moorelands, with the Stephen Lewis Foundation, with Christmas Kitchen, etc. are illustrative of that.
- For younger families the cost of housing leads to pressures to earn a high wage - it would be good to offer a space where people can just come and be themselves eg opening up the gym as a drop-in place, having relevant speakers talk about young family issues. For older people isolation - it would be good to offer programs for seniors - Coffee mornings, senior exercise classes, arts and crafts.
- Our church building and property offer a lot of scope for community activities and events that could involve the community like the Christmas Kitchen and Jubilee tea. We could offer activities and events throughout the week, not just Sunday worship, which would allow our neighbours to be part of our community and to meet and interact with each other. What we could offer are opportunities for community and engagement beyond church services. We could hold organ recitals or other concerts. We could have guest lecturers. I think there are already a lot of activities available for younger people in the community so I think a lot of activities could be offered for seniors in the community such as a weekly coffee hour, bridge, singalongs, foot clinics.

On the top qualities desired in a priest and the direction of the parish:

- Need someone with good people skills who will be comfortable working with lay people and other clergy as a collaborative leader instead of an "Father always knows best" type
- We are at a bit of a crossroads. Stalwart members on a number of fronts are stepping back after many years of remarkable engagement. Some of that is due to age, some of that is fatigue. The financial backstop of the Soward Fund may -- in fact -- disguise the hollowing out of our situation ... people thinking that somehow, we'll get through. This post-'acute COVID' period will require strong, articulate leadership from both clergy and lay membership to restore vitality to St. Tim's. It is a time of increased vulnerability, but also an opportunity for rejuvenation.
- This is not an easy task and I do hold you in my prayers. Be open to what is ahead and consider the future of this parish. It will be a balancing act, of respecting the past while moving forward in different ways and you are not alone.