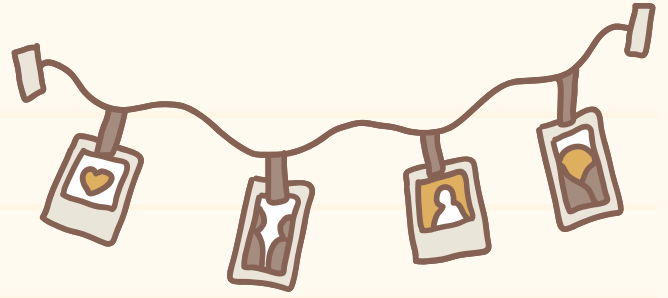


Cheat Sheet

Ministry to the outliers



Tips and encouragement

- God invites EVERYONE to God's table of love
- Work to make your church ever more humane
- Programming is secondary in Ministry!
- Don't worry if your group doesn't cohere
- Anglican churches are often places of refuge for people who don't fit in elsewhere!
- The rhythm of our liturgical life can be a space of safety and success for neurodivergent people
- Sometimes being fewer in number can help us to really know and welcome people, to make space for who they are. Smaller groups are a blessing for some people!

Cheat Sheet

Ministry to the Outliers



The Wisdom of the Sturdy Ministry Bar Stool

- Connection to God
- Connection to True Self
- Connection to Peers
- Connection to Caring,
Healthy, Adults

