



ST. ANDREW CHURCH PARISH PROFILE

Our Angel

Originally carved in a maple tree
located in the church yard,
welcomes all to worship with us.

St Andrew Church
125 Wellington St., West,
Alliston, ON
Oct. 2025

Mission Statement

We the family of St. Andrew,
by the grace of God through Jesus Christ
are committed to being the Church in the world.
As the body of Christ empowered by his Holy Spirit,
We will use our God given talents
to worship, proclaim, learn, serve, reach out and welcome others as
we journey together in faith.

Land Acknowledgement

We respectfully acknowledge that the land which St. Andrew Church and its Healing Ministries resides on is the traditional territory of the Anishinaabe Nation. The Anishinaabe include The Ojibwe, Odawa and Pottawatomi nations, collectively known as the Three Fires Confederacy. We also recognize that the Wendat and the Haudenosaunee Nations have also walked on this territory over time. We would also like to acknowledge the enduring presence of the many Indigenous Peoples in this region. We do this to affirm our commitment and responsibility in improving our relationships between nations and to improve our own understanding of local Indigenous Peoples and their cultures.

Table of Contents

Mission Statement	1
Land Acknowledgement.....	1
Who we Are?	3
Worship, Liturgy, and Music.....	4
Learning and Spiritual Nurture and Development.....	6
Mutual Support and Fellowship	8
Pastoral Care	8
Human, Physical and Finances	10
Neighbourhood, Mission, Outreach, and Evangelism.....	12
Present Reality.....	13
Future Vision	14
Our New Priest	15
Windows at St. Andrew	16
Appendix.....	17
Financial Statements	18
St Andrew - Town Hall	19
Attendance Review.....	21

Who we Are?

Welcome to St. Andrew Parish. We are waiting prayerfully for God to send you to join and lead us. Our parish carries a proud and faithful legacy; one we are committed to preserving and passing on to future generations. Though challenges lie ahead, they come with many opportunities and blessings, and we look forward with faith and hope to the journey ahead with you.

St. Andrew Anglican Church, located in the heart of Alliston, Ontario, is a welcoming and faith-filled parish with nearly 150 years of worship, service, and community life. Rooted in Anglican tradition and guided by the Holy Spirit, St. Andrew stands at a moment of renewal, grateful for its heritage and eager to embrace new possibilities for ministry.

Worship lies at the center of parish life. Two services are offered on Sunday, with dedicated congregations to each. Parishioners speak with love of the liturgy, sermons, and music, all of which draw them into a deeper experience of God's presence. Special services for healing, remembrance, and holy seasons enrich our worship.

Learning and spiritual nurture are deeply valued. Children's Sunday School, Life & Scripture study groups, and the BrainiACTS literacy outreach program all reflect the parish's commitment to serve across generations. St. Andrew hopes to grow its ministry with children, youth, and families.

Pastoral care and fellowship are defining features of parish life. The priest and parishioners offer compassionate care through hospital visits by trained spiritual care visitors, retirement home services, home communion, and prayer ministries. Parishioners describe St. Andrew as kind, joyful, and deeply supportive, a true church family.

Financially, the parish has shown faithful stewardship. With a thoughtful reflection and renewed vision, St. Andrew seeks to use its resources more effectively in support of ministry and outreach.

As Alliston grows and diversifies, St. Andrew seeks to be a visible sign of God's love, serving its neighbours, welcoming newcomers, and building community partnerships. Looking to the future, the parish envisions a church that is welcoming, vibrant, and Spirit-filled, where worship strengthens faith, fellowship nurtures community, and outreach extends Jesus Christ's compassion.

"The one who calls you is faithful, and he will do this."

— 1 Thessalonians 5:24

Congregation Sept. 2025



Worship, Liturgy, and Music

At the congregational Town Hall in September 2025, St. Andrew participants spoke of loving the liturgy, sermons, hymns and music ministry, as well as experiencing a sense of the Holy Spirit and spiritual comfort. Certainly, the church interior, with its stained-glass windows of the apostles and the soaring wood beam roof, lends itself to a deep spiritual and worshipful experience.

There are two Sunday morning worship services. The first is a quiet service without music. It attracts a smaller senior group who are devoted to this format. They appreciate the quiet spiritual atmosphere, and the freedom it gives them to enjoy the rest of the day with their families.

The 10 a.m. service has beautiful music and hymns. Its congregation is larger and more mixed in terms of age, including a few families. Otherwise, with regard to the liturgy, readings and sermon, the two services are identical.

We follow the Anglican Book of Alternative Services, with Bible readings from the New Living Translation. So traditional liturgy is combined with accessibility in the lessons. Holy communion is celebrated every Sunday.

We have a Morning Prayer service at noon on Wednesdays. The Lay Readers take turns to lead the service, after which people are invited to sit in silence for private prayer. Generally, there are not more than a handful of attendees, but quite often someone new from the neighbourhood will come in to enjoy prayer and the quiet time. Special Healing Services are held on Sundays bi-monthly. The congregation is invited to come forward and have the priest and lay readers anoint them and pray for their special requests.

On All Saints Sunday in November, we traditionally hold a solemn Memorial Service. congregants' light candles in memory of their loved ones as their names are read out. It is a moving service as a harpist provides gentle background music. We also hold a Remembrance Day service in November, to honour all veterans.

In December we celebrate Advent, Christmas Eve (a family service at 4 p.m. and a candlelit service at 7 p.m.), and a quiet service on Christmas Day morning. As we move towards Easter in the spring, we have a daytime Ash Wednesday service, a Maundy Thursday evening service, and a Good Friday morning service. Finally, we have the most celebrated occasion of all, Easter Sunday services.

The music program at St. Andrew has been a vital part of the church for many years, with different music directors lending their own stamp to the programs and putting on well attended and much enjoyed fund-raising concerts, particularly at Christmas. Since January 2025, we have been blessed with the music direction of a highly gifted and delightful pianist who held a piano duet concert in the spring and plans others in the future. The choir is currently very small, but has two soloists. The church has excellent acoustics, a high-quality keyboard and electronic sound system, with projection screens to help with worship.

At the Town Hall in September, music and liturgy prompted lively discussions. Many want to stay with the traditional forms and music, but others call for more innovation and more contemporary forms and instruments, like guitars and drums to attract younger people. They suggested inviting gospel groups occasionally, and many want the youth to be more involved in the liturgy and music.

The Altar Guild has five members. They work individually, looking after the candles, flowers, and setting up the Altar for Sunday services and communion. On special holidays like Thanksgiving and Christmas they together work to bring the church to life with colourful decorations.



St. Andrew altar decorated for seasons throughout the year.

Learning and Spiritual Nurture and Development

At St. Andrew, Jesus is at the heart of who we are, a community rooted in faith, enriched by tradition, and strengthened through worship, learning, prayer, and service. Our parishioners consistently describe our worship as a source of deep spiritual connection. Traditional liturgy, thoughtful sermons, heartfelt music, and the sharing of communion draw us together in reverence and joy, nurturing our faith and reminding us of God's abiding presence among us.

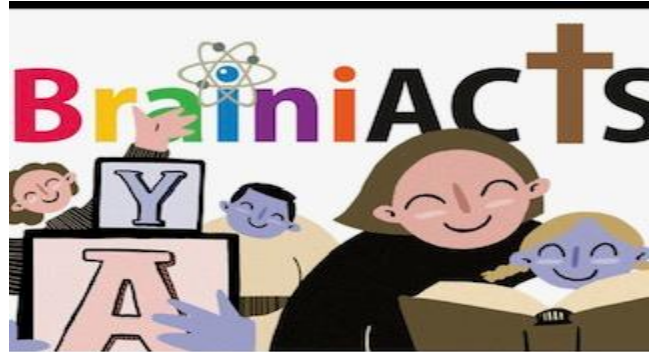
We have always cherished the presence of children and youth within our congregation. Although the number of young families has decreased in recent years, from eighteen to about five on an average Sunday, their involvement remains an essential part of our parish identity. Each Sunday morning at 10:00 a.m., Sunday School begins with "Grandma Joan's Story," a beloved time of storytelling that sets the tone for the day's lesson. The children then explore Bible stories drawn from the same readings shared in worship, allowing parents and children to engage with scripture together. Afterward, they take part in a creative craft tied to the day's teaching, before returning to the sanctuary to receive communion and a blessing with their families.

We are blessed with a spacious and welcoming Sunday School area, bright, well equipped, and thoughtfully arranged with colourful tables, audio-visual resources, and dedicated rooms for different age groups. It is a joyful space, and we long to see it once

again filled with the laughter and energy of children, youth, and teens. At our recent Parish Town Hall, parishioners collaborated in small groups to envision our future, expressing both a shared hope and an eagerness to explore new paths forward. With a growing community around us and close proximity to several local schools, we feel a renewed sense of possibility for ministry with children, youth, and families.

We look forward to a priest who will encourage us to grow a vibrant ministry, one that nurtures faith, builds community, and inspires young people to walk confidently in Christ's love.

Tuesday afternoons bring a different kind of ministry through BrainiACTS, our literacy and academic support program for children in grades 1–6. As part of our outreach mission, BrainiACTS offers individualized help in reading, writing, and math, along with homework support. Beyond academics, it fosters confidence, joy, and a love of learning, helping children celebrate their growth together in a safe, caring environment.



Faith formation at St. Andrew continues throughout the week. On Tuesday mornings, our Life & Scripture group meets for Bible study, reflection, and prayer. Up to a dozen participants explore the Scripture readings for the coming Sunday, deepening understanding and listening together for God's voice. These gatherings strengthen personal faith and help shape our shared spiritual journey.

On Wednesday mornings, another small group meets to discuss literature, films, and faith-based series. Through conversation and reflection, participants explore how stories of faith, grace, and transformation speak to our own experiences and to the wider life of the Church. Evening Alpha courses have also provided opportunities for seekers and members alike to engage in open, thoughtful discussion about the foundations of Christian belief.

Prayer and healing remain central to our life together. Many find renewal through private prayer, healing groups, reflective Wednesday services, and healing Sundays. The opportunity to request blessings or prayers is deeply valued, offering comfort and spiritual strength in times of need.

In every aspect of our shared life, worship, learning, prayer, fellowship, and outreach, St. Andrew continues to nurture spiritual growth. Here, faith is deepened not only through teaching and tradition, but through the everyday acts of kindness, service, and shared hope that make our congregation a true community of grace.

Mutual Support and Fellowship

Every Sunday a group of dedicated parishioners arrive early to put the large coffee pot on and prepare treats for the congregation to share after both the Sunday morning services. Some parishioners actually attend both as they come early for 10:00 am service to meet up with the earlier group before they leave.

Another group act as greeters and ushers throughout both services. They are there to welcome all and take care of any of our visitors. They collect the offering and assist with the flow for communion.

Food is a common theme for our church events, including spaghetti dinners, Shrove Tuesday pancakes, order in meals. The men of the parish tend to take the lead in preparation, not so much the clean-up. There is no doubt these meals are popular and everyone has a good time.

Each year we host a Christmas Bazaar, with homemade goods from parishioners, and outside vendors. An annual attraction is the sale of used books, donated from the community.

At the Town Hall the participants discussed having neighborhood community events, and participating in more seasonal celebrations during the year to increase our presence in the community. Any outreach that brings new people to St. Andrew will make them feel welcome.

Pastoral Care

Pastoral care is an essential part of St. Andrew mission. We provide spiritual and emotional support for our congregation and the broader community in many ways.

One team, for example, visits Alliston's three retirement homes every month and provides a worship service for any residents who wish to attend. We feel this is an important way of reaching out and providing spiritual support to our elderly people who are unable to get to church.

Hospital visiting is another active ministry. Fortunately, the local hospital, Stevenson Memorial, is just a couple of blocks away in downtown Alliston. We visit individual parishioners there, but also have several people on the hospital's Spiritual Care Team. This team goes in pairs to the hospital, visiting patients in the wards to offer conversation, sympathy, and if appropriate prayer. The program is coordinated by a St. Andrew parishioner, and monthly training meetings are held in the Christian Healing House. The team also includes volunteers from other denominations, which fosters meaningful ecumenical relationships within the Christian community.

St. Andrew, uniquely offers a special Retreat House space for clergy and others who want to take time away from their busy lives. Located on the upper floor of the house to the west of the main church, the Retreat House provides accommodation and a quiet, sacred space for spiritual reflection, refreshment, and prayer.

Home visits are made frequently to parishioners and others who are homebound or experiencing spiritual or personal crisis. These visits are usually conducted by the priest, accompanied by one or more members of the prayer team. We also recently began a Shepherding Program to send emails or cards to any congregation member who is in difficulty or has been absent from church for some time.

One way we keep in touch with parishioners who can't come to every Sunday service, and with many other friends of the parish is through a weekly e-mail newsletter with announcements, previously coordinated by the priest. Currently there are 120 subscribers with an average sixty per cent click on rate. This goes out on Sunday mornings and includes updates and news about what's happening in the parish, the names of those we are asked to pray for, and the weekly scripture readings. Sometimes there is a general reflection, and often a link to a video of the sermon given the week before.

The prayer group offers individual prayer appointments for anyone seeking spiritual or physical healing prayer. The group also compiles and updates every month a list of people who have requested prayer for themselves or loved ones. The list is emailed out confidentially to a wider team of prayer warriors, and in cases of urgency, they will also send texts.

At the parish town hall meeting held in September, it was clear that pastoral care is a central part of what it means to belong to St. Andrew. People shared that they feel supported during life's challenges and transitions, and that they find the congregation friendly, welcoming, kind, joyful, generous, and non-judgmental. Truly, there could be no better commendation for a small Anglican church.



St Andrew Campus

Human, Physical and Finances

St. Andrew has a significant history with a congregation dating back to the 1840s, known then as the English Church. A church building was consecrated in June 1876 at the current downtown Alliston location. About twenty years later, a rectory was built on the east side of the church. In the early years of the First World War, the Parish Hall was built to house the growing Sunday School and youth programs.

At the 50th Anniversary Vestry meeting, the congregation approved the demolition and rebuilding of a larger church. Architect Forsey Page designed a building reminiscent of an old English village church, similar to his design for St. Clements in Toronto. Remarkably, the new church was completed within seven months of demolition and was consecrated in 1927.

The property to the west of the church was purchased in 1960, and the congregation was able to pay off the mortgage within two years.

Music has always been integral to worship at St. Andrew. Historical records document the purchase of organs through the decades, concerts, choir photos, and the contributions of talented and dedicated music directors.

In 2026, St. Andrew will celebrate 150 years of worship and community outreach in Alliston. This milestone offers both gratitude for the past and a call to discern how our faith community might continue its profound legacy in the years ahead. Over the past

three years, St. Andrew has demonstrated consistent financial stewardship and a high level of congregational generosity. Nevertheless, financial statements for this period, provided in the appendix, reveal a sustained operating deficit that is projected to continue through 2025.

Capital improvements to church properties were financed through proceeds from the sale of an adjacent property to Ontario Housing. These one-time funds have now been fully utilized.

Financially St. Andrew has been operating with a deficit and has been depleting investments to cover operating expenses. It is obvious changes need to be made to better use the real estate resources. Currently we have a Christian Healing House and a Parish House. The Parish House is currently used for offices and the upper unit is designated to be a Retreat House for Clergy in the Diocese. In recent years this has not been a viable venture. The Christian Healing House is the rectory which has not been occupied by the incumbent for about 20 years; however, it could be available for our new priest. Currently it is used for Bible Study groups and corporate meetings. The vision for the property is to provide healing workshops and generate income from this. The Christian Healing House has been funded by private benefactors that have recently left the church. The new priest will work with the congregation to discern and implement a new vision for these properties connected to the church.

Parish leadership continue to manage resources prudently current financial statements indicate a financial review is necessary. St. Andrew leadership remains committed to addressing this issue.



Retreat House

St. Andrew continues to thrive through the dedication and generosity of its parishioners, who manage nearly every aspect of parish life. Our wardens, lay readers, maintenance team, office helpers, and financial officers offer their time and talents freely to sustain the mission and ministry of the church. Their work is complemented by our part-time Music Director and a small group of on-call staff who assist as needed, helping ensure that worship and parish life unfold with care and consistency.

Many of the administrative and clerical duties once handled by the priest are now overseen by the Corporation Committee, wardens, deputy wardens, mentors to wardens, and the treasurer whose collaborative leadership has enabled parish operations to remain steady, even through periods of transition. We are also blessed with four Lay Readers and a retired Deacon who provide faithful spiritual guidance and liturgical support, enriching our common worship.

The Retreat House and Healing House are supported by a small committee under the priest's guidance, offering valued ministries of study, rest, and spiritual care. The Healing Ministry remains a cherished priority for our parish, and the congregation is open to new ideas and thoughtful conversation as we look to the future. We hope our next priest will be actively involved in the Healing Ministry, engaged with the Retreat House, and fully participating with the prayer team, helping to deepen the spiritual life of the parish in the community.

As our congregation ages, it has become increasingly challenging to rely solely on parishioners for the upkeep of the property and the daily operations of the parish. While the commitment of our congregation remains steadfast, the need for sustainable staffing support is becoming more evident, ensuring that St. Andrew can continue to serve its members and the wider community for generations to come.

Neighbourhood, Mission, Outreach, and Evangelism

St. Andrew Anglican Church is located in Alliston, Ontario, within the Town of New Tecumseth, which includes Alliston, Beeton, Tottenham, and the surrounding rural areas. Our town is among Ontario's fastest-growing municipalities, with a population that increased by 28.3% between 2016 and 2021, reaching 43,948 residents. The Province of Ontario has identified New Tecumseth as a priority area for growth, projecting a population of over 81,000 by 2051.

New Tecumseth's growth is both rapid and richly diverse. Nearly one in five residents (19.3%) are newcomers to Canada, representing a 73.7% increase since 2016. The community is also young and dynamic, with 19.1% of residents under the age of 15 and 63% within the working-age population. The average individual income is \$53,764

(\$114,900 per household), slightly below the provincial average, reflecting both opportunity and challenge within our local economy.

This growth brings with it both blessings and needs. Alongside new neighbourhoods and businesses, we are witnessing an increase in homelessness, addiction, and food insecurity. While local shelter resources remain limited, a short-term emergency shelter operates within the town, and a longer-term facility supports women and children affected by intimate partner violence. Food banks in both Alliston and Tottenham play a vital role in caring for those in need, and St. Andrew supports these through donations and volunteer service.

Our parish also enjoys a meaningful connection with the Alliston Branch of the Royal Canadian Legion, where the Priest of St. Andrew served as Padre. With Canadian Forces Base Borden, Canada's largest military training base, located just minutes away, Alliston maintains deep ties with military families and veterans. Several parishioners are veterans who, along with Legion members, support veterans in need.

On Fridays, a group from St. Andrew gathers at the Legion for its open-to-the-public lunch. These weekly visits are more than a meal; they are an opportunity to share fellowship, offer pastoral presence, and strengthen community bonds. Many friendships have grown from these encounters, and some of our new friends have joined us in worship from time to time.

As our town continues to evolve, welcoming new Canadians, young families, and those facing hardship, St. Andrew is called to respond with faith, hope, and love. We believe this is a time of profound opportunity to live out our Anglican mission: to be a visible and active sign of Jesus' presence in our community. Guided by prayer and the Holy Spirit, we seek to embody Christ's compassion through service, hospitality, and relationship-building across cultures and generations.

Looking ahead, St. Andrew aims to strengthen partnerships with local organizations, support and expand outreach ministries, and explore new ways of offering both practical help and spiritual nurture. With God's grace, we strive to be a beacon of light and love in the heart of New Tecumseth, a parish where faith is shared, community is built, and lives are transformed through the love of Christ.

Present Reality

St. Andrew is a parish grounded in faith, resilience, and a deep sense of community. Our congregation of 131 members gathers faithfully for worship, with an average attendance of about 20 at the 8:30 a.m. service and 35 at the 10:00 a.m. service. Each service offers a distinct expression of Anglican tradition, and both reflect the warmth, hospitality, and prayerful spirit that define our church family.

We are a people who take joy in worship and who find strength in one another. Whether gathered on Sunday mornings, sharing fellowship after services, or serving in outreach ministries, there is a tangible sense of belonging and shared purpose among our members. Parishioner volunteers are at the heart of our ministry. From music and worship leadership to outreach, pastoral visiting, and the care of our beautiful property, parishioners offer their time and talents freely and joyfully. This spirit of service reflects a genuine love for God and for one another.

Our church buildings, from the sanctuary and parish hall to the two century homes, are both a blessing and a significant responsibility. While these treasured spaces offer opportunities for worship, hospitality, learning, and community connection, they also present ongoing financial challenges. As we look to the future, we recognize the need for fresh visioning to ensure these buildings can continue to serve ministry and the wider community sustainably. The congregation is in a time of reflection and renewal, discerning new ways to grow in faith and to welcome others into our life together. There is a deep desire to see new families, children, and youth engaged in the life of the church and to build a vibrant, intergenerational community where faith can flourish. Above all, St. Andrew remains a place where people find hope, prayer, and companionship on their journey with Christ, a parish that, even amid change, continues to be guided by the Holy Spirit and sustained by faith.



Future Vision

We look to the future with hearts full of hope. We believe God is calling St. Andrew into a season of renewal and growth, where our challenges become opportunities to reimagine our ministry. As disciples of Christ our vision is to continue building a parish that is welcoming, vibrant, and Spirit-filled, where worship strengthens our faith, fellowship nurtures our community, and outreach extends Christ's love far beyond our walls. We dream of our buildings being used in ways that not only sustain us but also bless the wider community, spaces that heal, gather, and inspire. We see our congregation growing in discipleship, deepening in prayer, and reaching out with compassion. Above all, we envision St. Andrew as a parish rooted in God's love, trusting that the Spirit will guide us into a future of renewed strength, joyful service, and faithful witness.

"For I know the plans I have for you," declares the Lord, "plans to prosper you and not to harm you, plans to give you a future with hope." — Jeremiah 29:11

Our New Priest

We are waiting with prayerful hearts for the person God is calling to join and lead us. Ours is a parish with a proud and enduring legacy, one we are dedicated to preserving and strengthening for generations to come. Music holds a special place in our life together, enriching our worship and drawing us closer to God. We hope for a leader who shares our passion for music as a joyful expression of faith. While we face challenges, we believe they come hand in hand with great blessings, and we look forward with faith and hope to the journey ahead with you.

The people of St. Andrew seek a priest whose ministry is grounded in spiritual depth and the rich traditions of the Anglican faith. We value someone rooted in scripture, whose preaching is biblically faithful yet relevant to the realities of daily life. Traditional Anglican liturgy lies at the heart of our worship, and we hope for a leader who will uphold its beauty while helping the congregation engage with it in meaningful and inspiring ways.

Warmth and genuine pastoral care are equally important to us. We long for a priest who is compassionate, approachable, and humble, someone who listens well, inspires trust, and relates naturally to people of all ages. A sense of humor, kindness, and a caring spirit are qualities that help build connection and strengthen our sense of community.

We also place great emphasis on ministry with children, youth, and families. Our hope is for a priest who values intergenerational connection and is committed to nurturing young people in faith, supporting programs that engage families, and encouraging participation across all age groups.

There is a strong interest within our parish in the ministry of healing. We hope for a priest who embraces the wholeness of body, mind, and spirit, and who can integrate prayer, compassion, and pastoral care into a ministry that renews and restores.

While we hold our traditions dearly, we also seek a leader who understands the importance of balance, someone who respects the past yet remains open to thoughtful, inclusive renewal. We value collaborative leadership, strong organizational skills, and the ability to work in partnership with lay leaders and parishioners.

Above all, we pray for a priest who combines spiritual depth with personal warmth, grounded in Anglican tradition yet open to new possibilities. We seek someone who can care for individuals with grace, foster healing and growth, inspire through music and worship, and guide St. Andrew faithfully into a vibrant and hopeful future.

Windows at St. Andrew



Appendix

Financial Review

Town Hall Response Summary

Church Attendance

Financial Statements

Assets	Code	Description	Dec. 2022	Dec.2023	Dec.2024	Aug. 2025
	1001	CIBC bank	24290.67	18340.93	22892.02	19109.5
	1002	BrainiACTS	10296.09	9181.53	9324.95	8397.91
	1103	GIC special Accounts	137380.96	97211.31	60781.83	40207.47
	1250	Receivable	2614.13	4745.63	2715.33	
	1830	Other Investments	1840.9	2048.14	2390.02	
Total	ASSETS		176422.75	131527.54	98104.15	67714.88
Income						
	4200	Healing House	16153.76	28425.95	39138.37	20892.25
	4400	Building funds	310	5		
	4500	Mission Fund	11,048.17	7228.92	6,326.25	3,138.60
	4300	Offerings	152,878.23	166,900.53	191,638.10	93,389.60
	4700	Altar Guild Fund	2179.32	1928	1882.5	1540
Total Income			182,569.48	204,488.40	238,985.22	118,960.45
Expenses	Expenses					
	5200	Church office exp Church Building	33,519.27	39,241.15	25,863.37	22,163.61
	5400	Exp	14,003.16	17,932.40	16,399.10	18,182.09
	5400	Parish House Exp	7112.73	7774.62	8,832.62	5352.54
	5500	Healing House	8608.06	7916.92	10,914.09	6,116.05
	6200	Building funds	14,121.76	35263.98	35,507.26	815
	6400	Mission	70,521.32	49,880.08	21,673.41	8,224.62
	6800	Altar Guild Wages and	2367.79	2926.96	3470.35	1763.62
	7200	Benefits	71,718.34	78,543.66	113,608.17	80,987.26
Total Expenses			221,972.23	239,479.37	236,263.37	143,605.15
Total Income			182,569.48	204,488.40	238,985.22	118,960.45
Net Income			-39,402.75	-34,990.97	2716.85	-24,644.70

St Andrew- Town Hall

September 28, 2025

Across all questions, the congregation consistently voiced a desire for a church that remains rooted in its traditions while finding creative, welcoming ways to grow and engage younger generations.

Youth and families appear to be at the heart of their vision, alongside a continued commitment to music, community outreach, and pastoral care. Underpinning all of this is the hope for a priest who embodies compassion, spiritual depth, and openness, helping the parish live out its mission in both continuity and renewal.

Common Themes Across All Questions

1. Youth and Families

- A major priority across liturgy, outreach, and priest qualities. Desire for youth-focused services, music, and activities.
- Hope for a priest who is relatable to young people and engaged with families.

2. Balance of Tradition and Renewal

- Strong respect for traditional Anglican liturgy, hymns, and values.
- Openness to new ideas (modern music, alternate services, creative outreach) provided changes are gradual and rooted in tradition.
- Many parishioners suggested blending old and new rather than replacing either.

3. Music and Worship Experience

- Music featured prominently in discussions of both liturgy and outreach.
- Calls for more variety (instruments, contemporary worship songs, gospel groups) alongside traditional hymns.
- Seen as a way to attract youth and new members, while also deepening spiritual life.

4. Community Engagement and Visibility

- Appreciation for current outreach (healing ministries, food support, homeless programs, nursing home visits).
- Desire to expand visibility through events (suppers, concerts, festivals, parades) and improved communication/advertising.
- A sense that outreach should be both service-oriented and invitational.

5. Pastoral Care and Spiritual Nurture

- Value placed on sermons that are meaningful, relevant, and scripture-based.
- Healing ministries, prayer, and study groups seen as central to spiritual growth.
- Congregants want a priest who is compassionate, approachable, and supportive in their personal faith journey.

6. Hospitality and Openness

- Welcoming newcomers, new residents, and people from diverse backgrounds.
- Emphasis on kindness, inclusivity, and community connection.
- A recurring theme of making the church feel like a family and a safe place.

7. Leadership Qualities in a New Priest

- Compassionate, personable, and approachable.
- Rooted in scripture and tradition but able to engage modern realities.
- Organizational and leadership skills to guide the parish, plus a collaborative, team-based approach.

Attendance Review

